

08 DAYS WEATHER FORECAST FOR COASTAL AREAS AROUND SRI LANKA

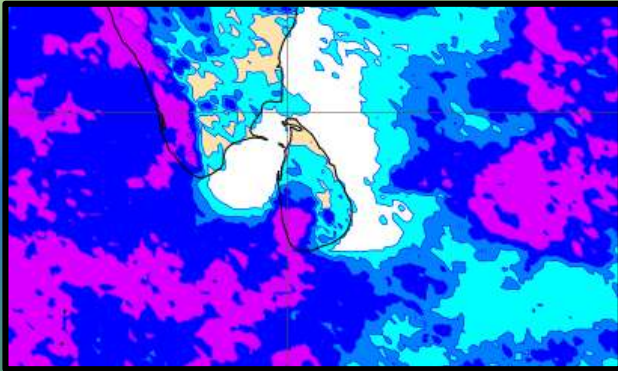
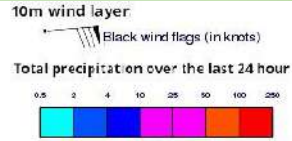


**INFORMATION FUSION CENTRE
COLOMBO**

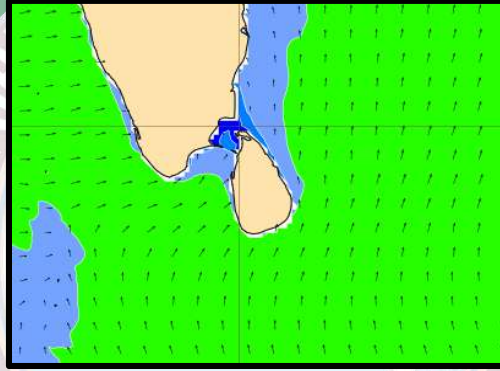
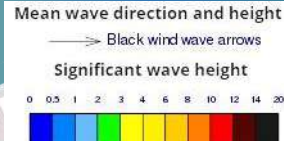


Issued at 0400 p.m. on 28th August 2025
Marine Weather Division, National Meteorological Centre, Department of
Meteorology, Sri Lanka

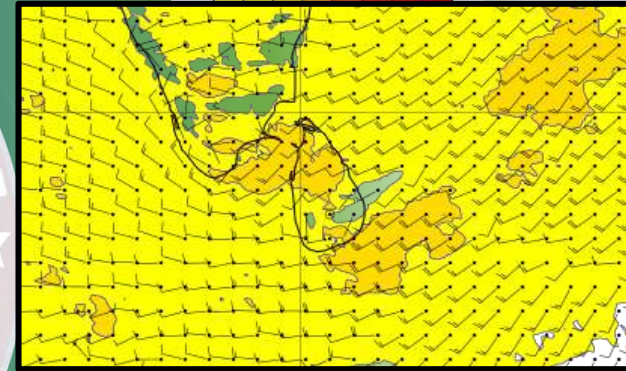
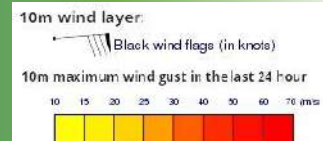
Wind and Rainfall Forecast (Total precipitation for 24 hrs)



Significant wave height (in meters)



Wind Gust (m/s)

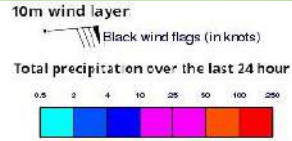


Showers will occur at several places in the sea areas off the coast extending from Puttalam to Matara via Colombo and Galle.

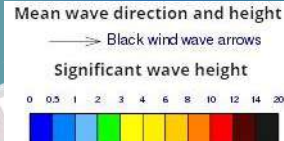
Wind speed will be 30-40 kmph. Wind speed can increase up to 50-60 kmph at times and the sea condition will be rough at times in the sea areas extending from Puttalam to Kankasanturai via Mannar and from Matara to Pottuvil via Hambantota.

Wind speed can increase up to 45 kmph at times in the sea areas off the coast extending from Kankasanthurai to Trincomalee via Mullaittivu and also from Puttalam to Matara via Colombo

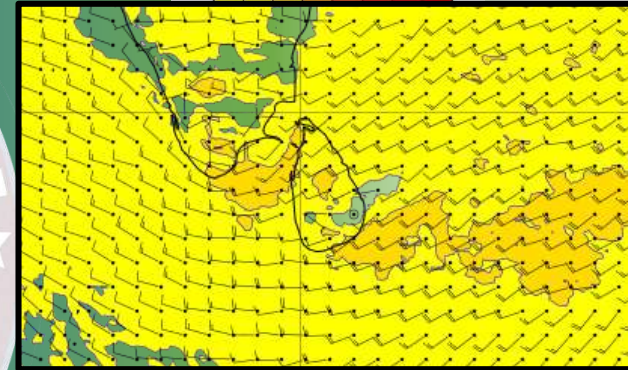
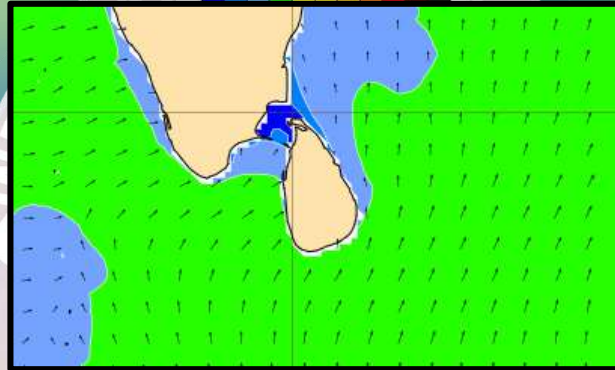
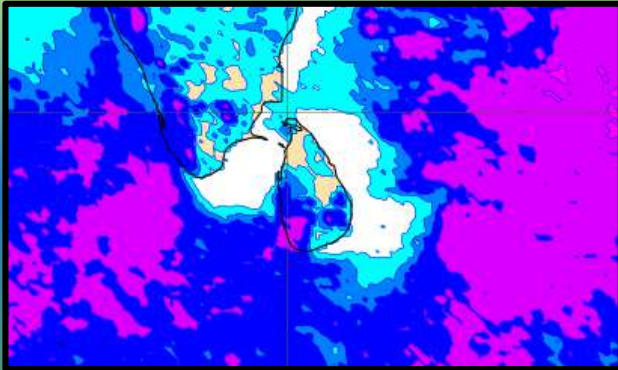
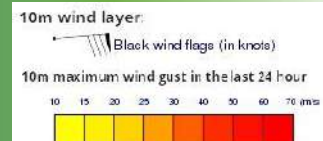
Wind and Rainfall Forecast (Total precipitation for 24 hrs)



Significant wave height (in meters)



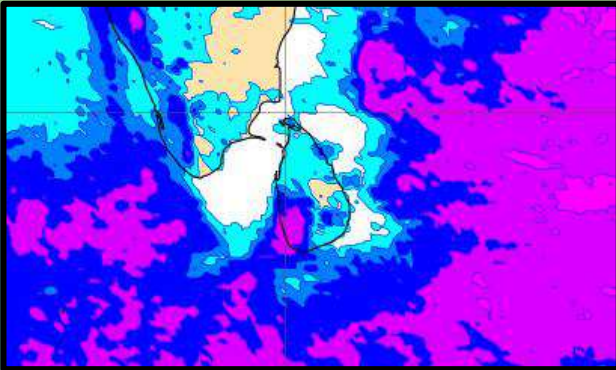
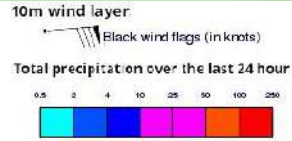
Wind Gust (m/s)



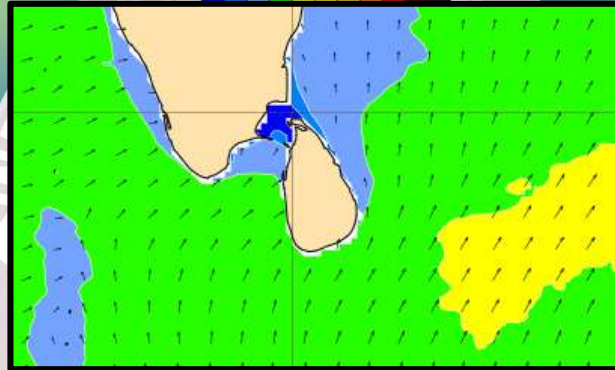
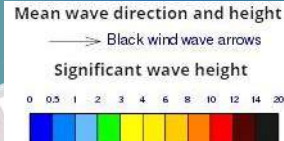
Showers will occur at a few places in the sea areas off the coast extending from Puttalam to Matara via Colombo and Galle.

Wind speed will be 30-40 kmph. Wind speed can increase up to 50-60 kmph at times and the sea condition will be rough at times in the sea areas extending from Puttalam to Kankasanturai via Mannar and from Matara to Pottuvil via Hambantota.

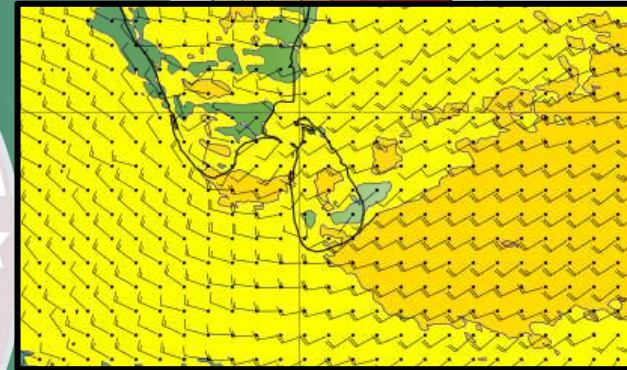
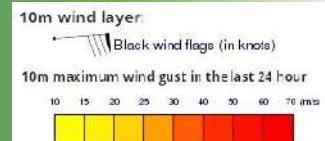
Wind and Rainfall Forecast (Total precipitation for 24 hrs)



Significant wave height (in meters)



Wind Gust (m/s)

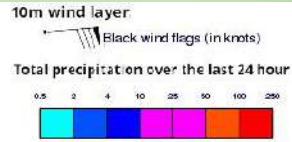


Showers will occur at several places in the sea areas off the coast extending from Puttalam to Matara via Colombo and Galle.

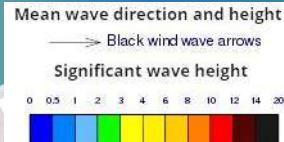
Wind speed will be 25-35 kmph. Wind speed can increase up to 50-55 kmph at times and the sea condition will be rough at times in the sea areas extending from Puttalam to Kankasanturai via Mannar and from Matara to Pottuvil via Hambantota.

01st September 2025

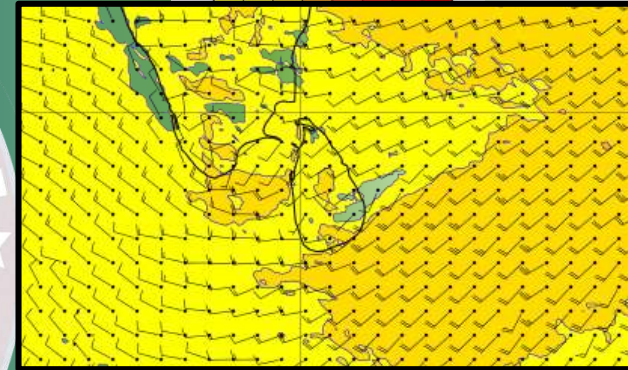
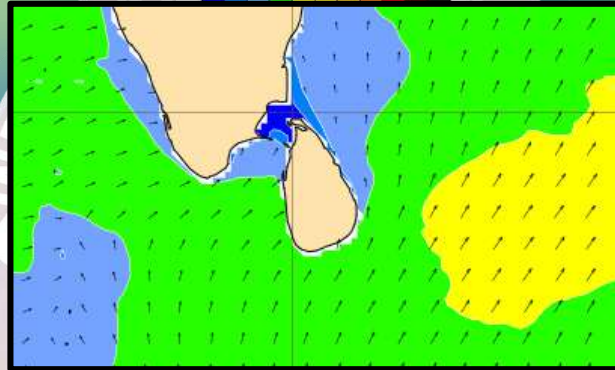
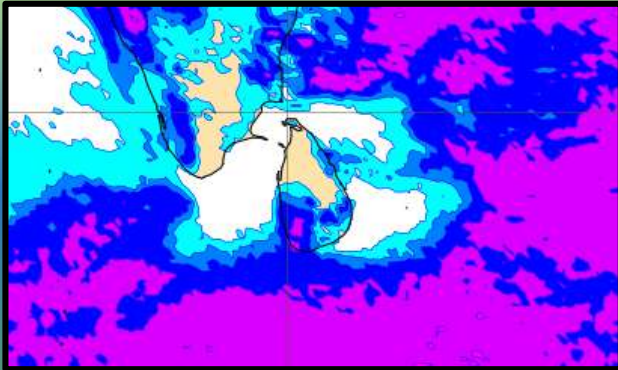
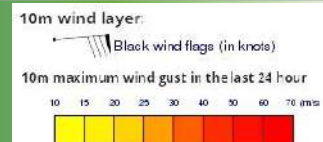
Wind and Rainfall Forecast (Total precipitation for 24 hrs)



Significant wave height (in meters)



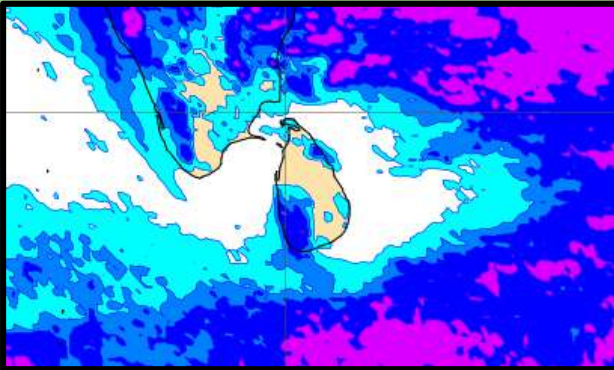
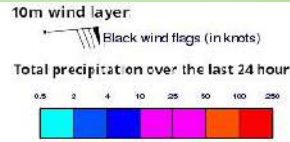
Wind Gust (m/s)



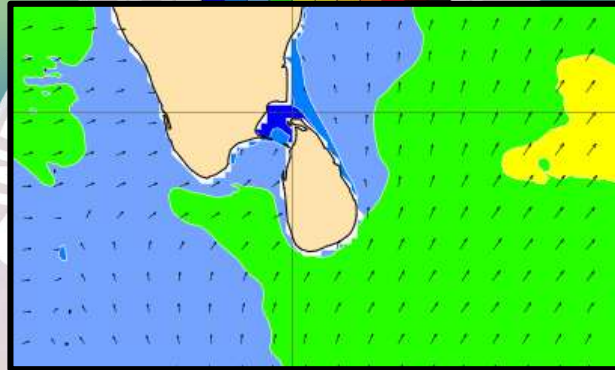
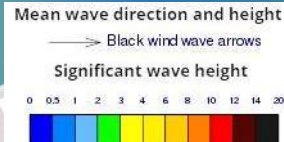
Showers will occur at several places in the sea areas off the coast extending from Puttalam to Matara via Colombo and Galle.

Wind speed will be 25-35 kmph. Wind speed can increase up to 50-55 kmph at times and the sea condition will be rough at times in the sea areas extending from Puttalam to Mannar and from Galle to Pottuvil via Matara and Hambantota.

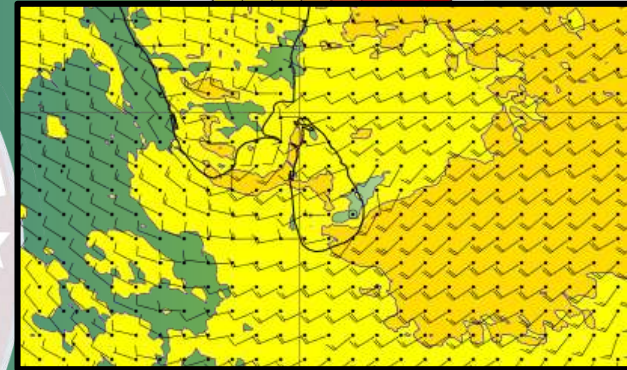
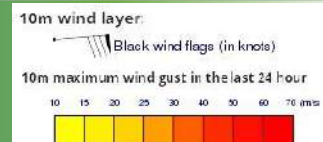
Wind and Rainfall Forecast (Total precipitation for 24 hrs)



Significant wave height (in meters)



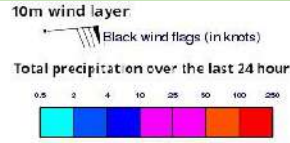
Wind Gust (m/s)



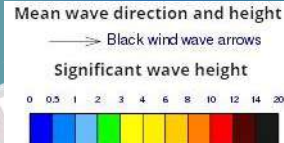
Showers will occur at a few places in the sea areas off the coast extending from Puttalam to Matara via Colombo and Galle.

Wind speed will be 30-40 kmph. Wind speed can increase up to 50-60 kmph at times and the sea condition will be rough at times in the sea areas extending from Puttalam to Kankasanturai via Mannar and from Matara to Pottuvil via Hambantota

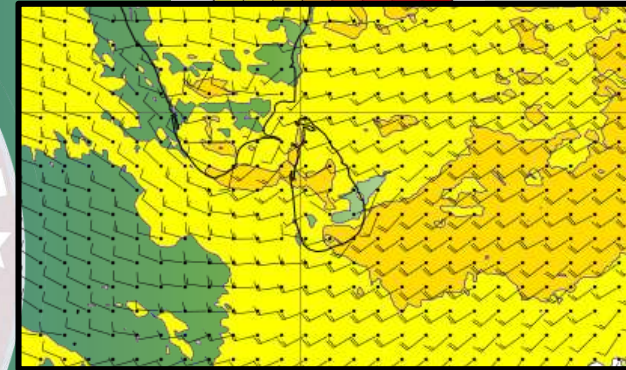
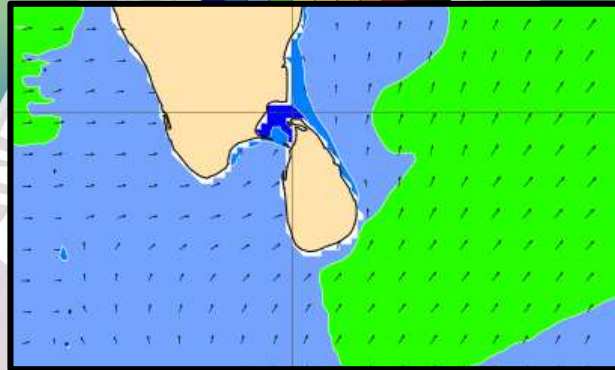
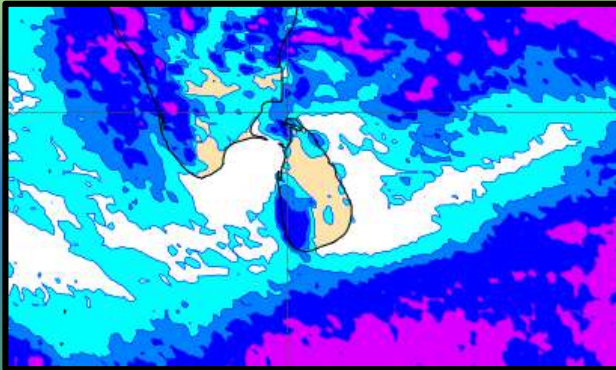
Wind and Rainfall Forecast (Total precipitation for 24 hrs)



Significant wave height (in meters)



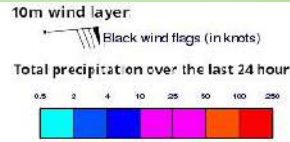
Wind Gust (m/s)



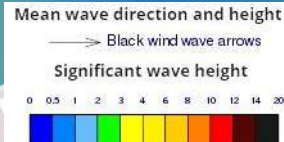
Showers will occur at a few places in the sea areas off the coast extending from Puttalam to Matara via Colombo and Galle.

Wind speed will be 30-40 kmph. Wind speed can increase up to 50-60 kmph at times and the sea condition will be rough at times in the sea areas extending from Puttalam to Kankasanturai via Mannar and from Matara to Pottuvil via Hambantota.

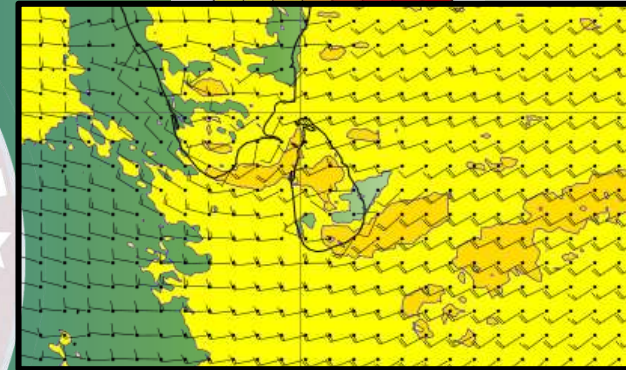
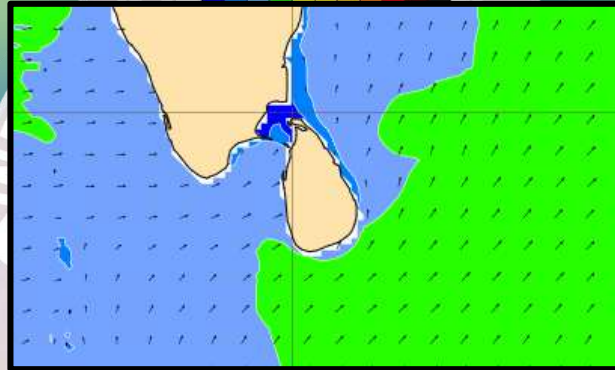
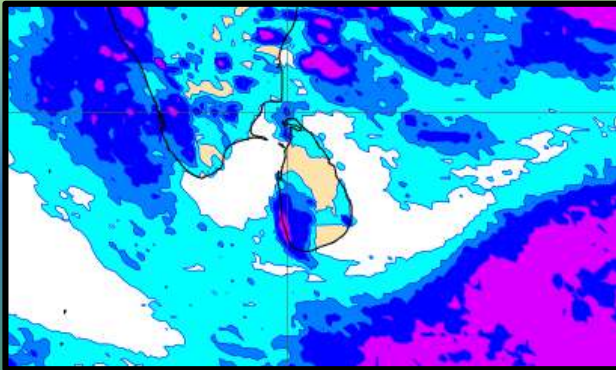
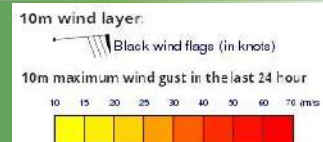
Wind and Rainfall Forecast (Total precipitation for 24 hrs)



Significant wave height (in meters)



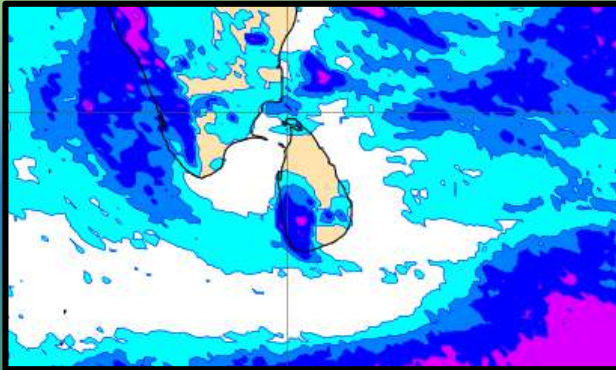
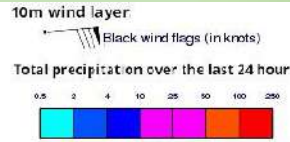
Wind Gust (m/s)



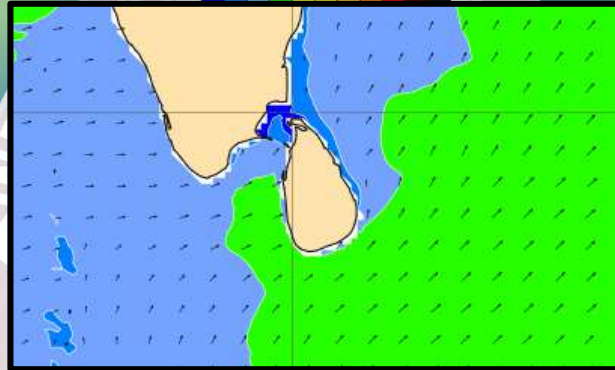
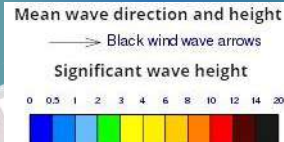
Showers will occur at several places in the sea areas off the coast extending from Puttalam to Matara via Colombo and Galle.

Wind speed will be 25-35 kmph. Wind speed can increase up to 50 kmph at times and the sea condition will be rough at times in the sea areas extending from Puttalam to Kankasanturai via Mannar and from Matara to Pottuvil via Hambantota.

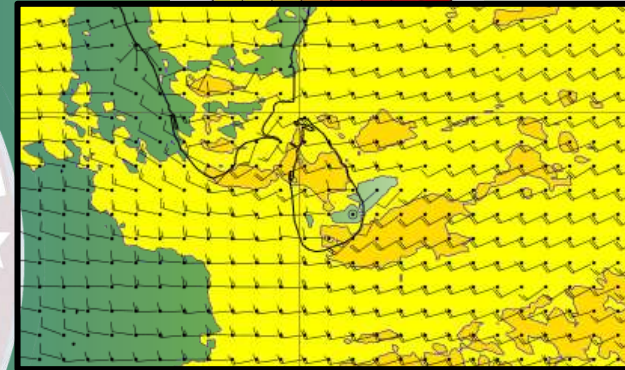
Wind and Rainfall Forecast (Total precipitation for 24 hrs)



Significant wave height (in meters)



Wind Gust (m/s)



Showers will occur at a few places in the sea areas off the coast extending from Puttalam to Matara via Colombo and Galle.

Wind speed will be 30-40 kmph. Wind speed can increase up to 50-55 kmph at times and the sea condition will be rough at times in the sea areas extending from Puttalam to Kankasanturai via Mannar and from Matara to Pottuvil via Hambantota.

Wind speed can increase up to 45 kmph at times in the sea areas off the coast extending from Kankasanturai to Trincomalee via Mullaittivu.

Thank you !

