

# 08 DAYS WEATHER FORECAST FOR COASTAL AREAS AROUND SRI LANKA

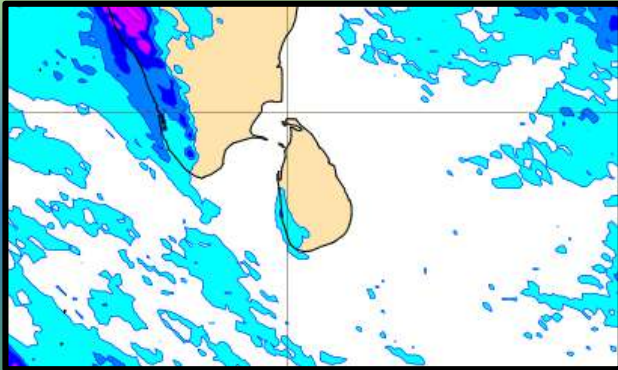
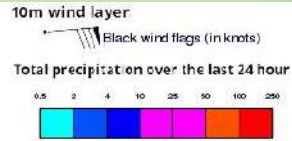


**INFORMATION FUSION CENTRE  
COLOMBO**

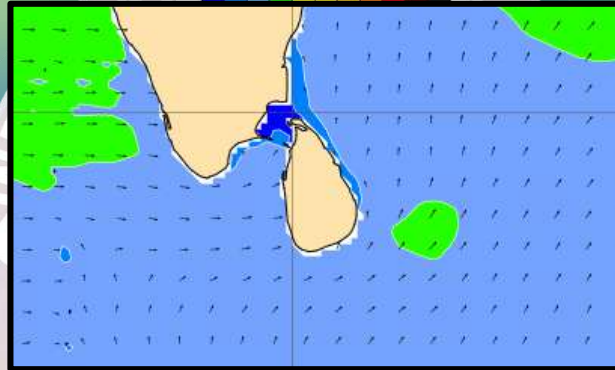
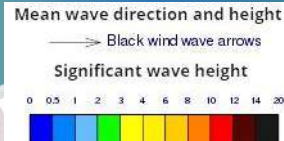


**Issued at 0400 p.m. on 18<sup>th</sup> August 2025**  
**Marine Weather Division, National Meteorological Centre, Department of**  
**Meteorology, Sri Lanka**

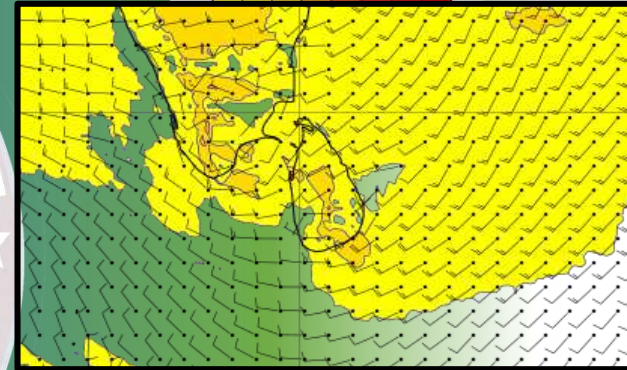
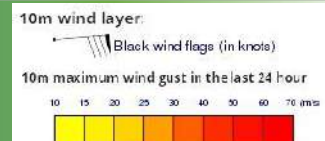
## Wind and Rainfall Forecast (Total precipitation for 24 hrs)



## Significant wave height (in meters)



## Wind Gust (m/s)

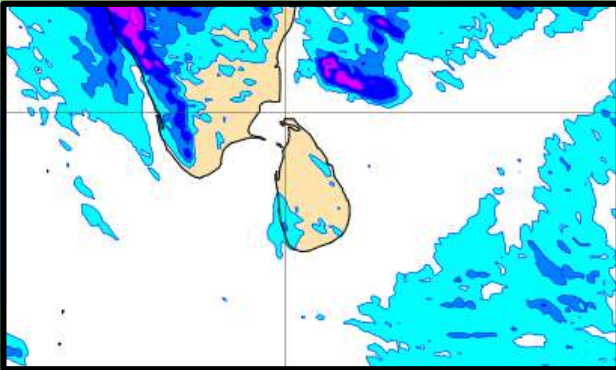
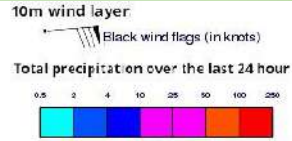


Showers will occur at a few places in the sea areas off the coast extending from Puttalam to Matara via Colombo and Galle.

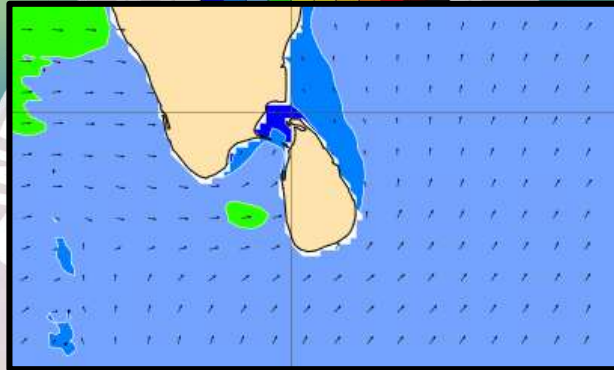
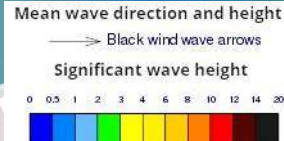
Wind speed will be 25-35 kmph. Wind speed can increase up to 50-55 kmph at times and the sea condition will be rough at times in the sea areas extending from Matara to Pottuvil via Hambantota.



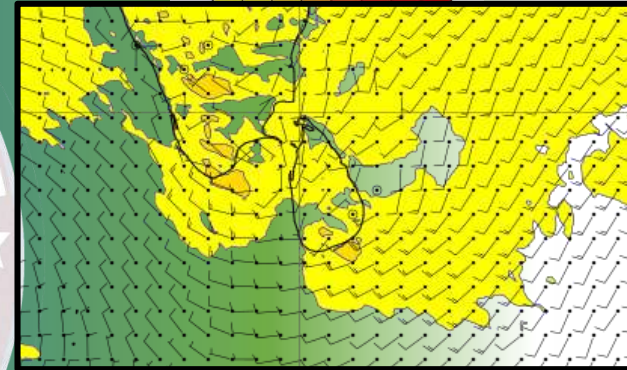
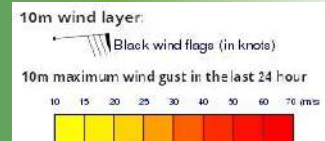
## Wind and Rainfall Forecast (Total precipitation for 24 hrs)



## Significant wave height (in meters)



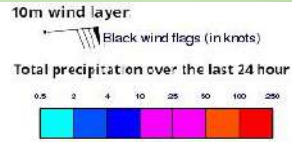
## Wind Gust (m/s)



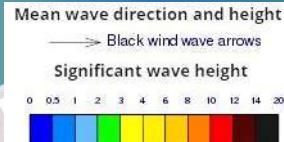
Showers will occur at a few places in the sea areas off the coast extending from Puttalam to Matara via Colombo and Galle.

Wind speed will be 20-30 kmph. Wind speed can increase up to 45-50 kmph at times and the sea condition will be fairly rough at times in the sea areas extending from Matara to Hambantota.

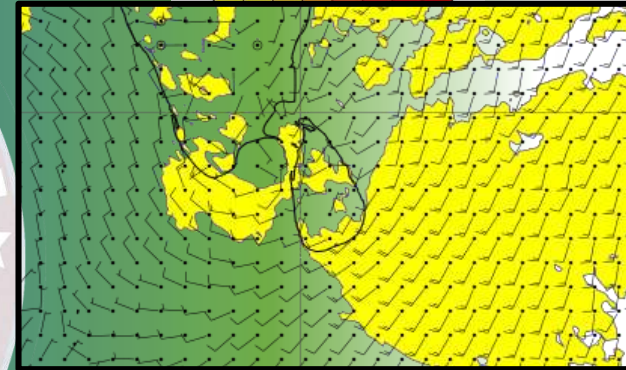
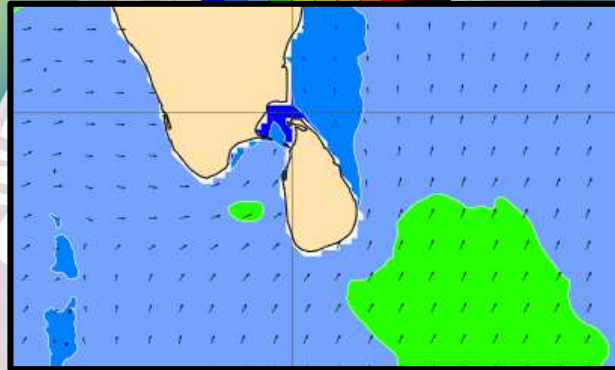
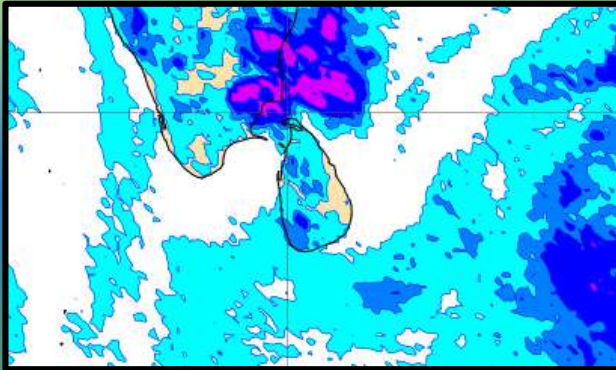
## Wind and Rainfall Forecast (Total precipitation for 24 hrs)



## Significant wave height (in meters)



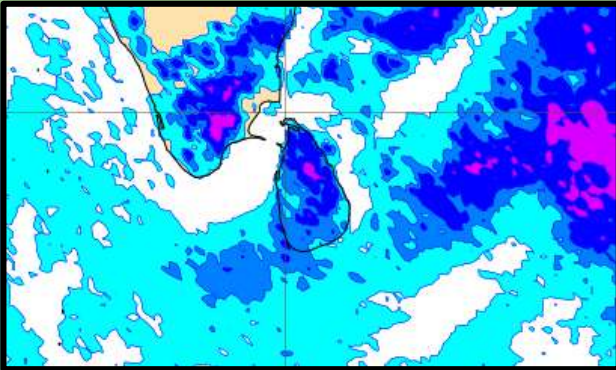
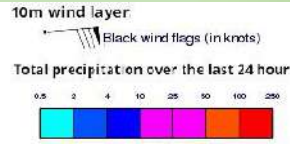
## Wind Gust (m/s)



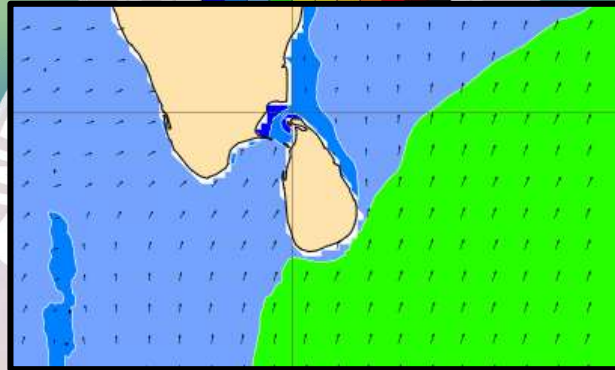
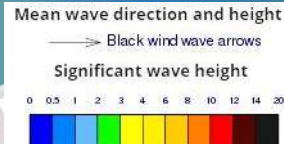
Showers will occur at a few places in the sea areas off the coast extending from Puttalam to Matara via Colombo and Galle.

Wind speed will be 20-30 kmph.

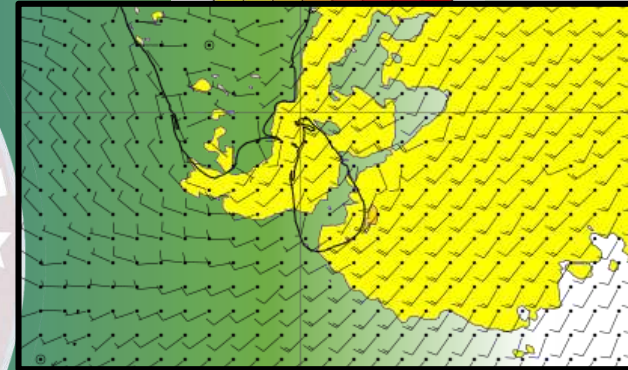
## Wind and Rainfall Forecast (Total precipitation for 24 hrs)



## Significant wave height (in meters)



## Wind Gust (m/s)

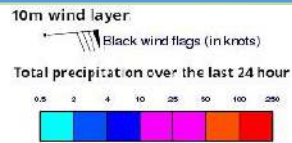


Showers will occur at a few places in the sea areas off the coast extending from Puttalam to Matara via Colombo and Galle.

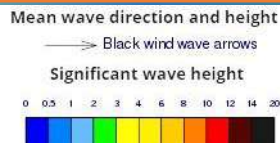
Wind speed will be 20-30 kmph. Wind speed can increase up to 45-50 kmph at times and the sea condition will be fairly rough at times in the sea areas extending from Hambantota to Pottuvil



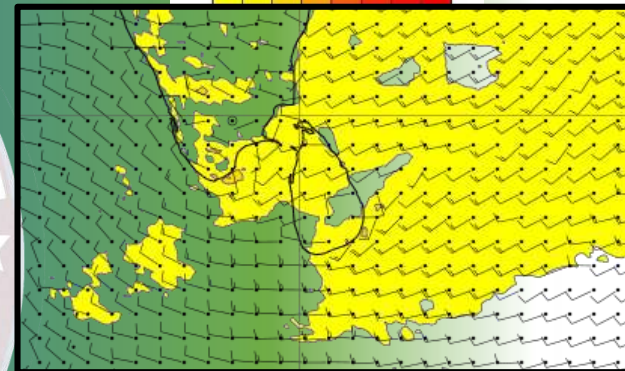
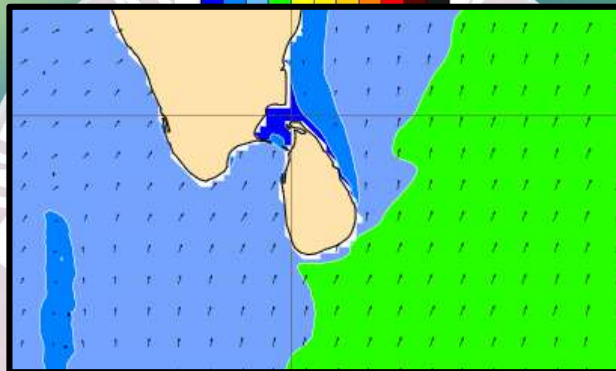
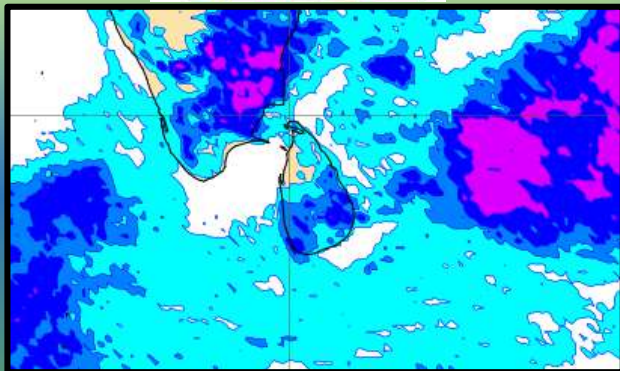
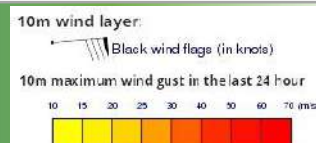
## Wind and Rainfall Forecast (Total precipitation for 24 hrs)



## Significant wave height (in meters)



## Wind Gust (m/s)

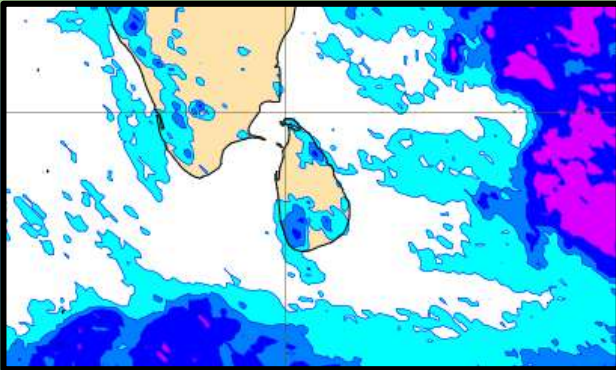
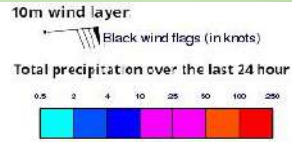


Showers will occur at a few places in the sea areas off the coast extending from Puttalam to Matara via Colombo and Galle.

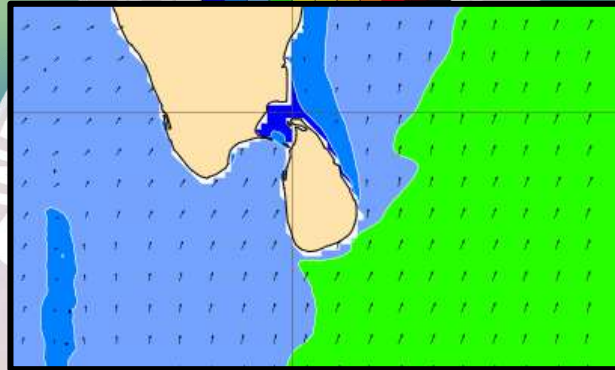
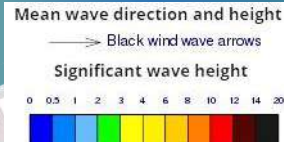
Wind speed will be 20-30 kmph. Wind speed can increase up to 45-50 kmph at times and the sea condition will be fairly rough at times in the sea areas extending from Hambantota to Pottuvil.

24<sup>th</sup> August 2025

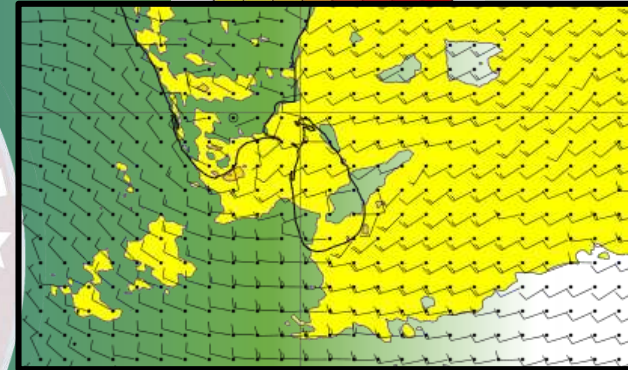
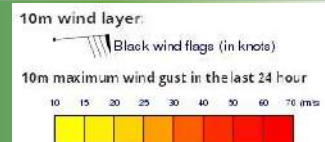
### Wind and Rainfall Forecast (Total precipitation for 24 hrs)



### Significant wave height (in meters)



### Wind Gust (m/s)

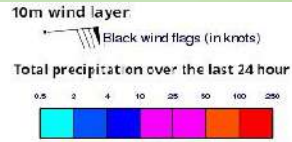


Showers will occur at a few places in the sea areas off the coast extending from Puttalam to Matara via Colombo and Galle.

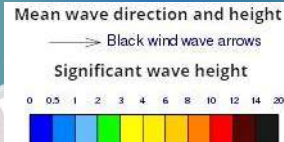
Wind speed will be 20-30 kmph. Wind speed can increase up to 45-50 kmph at times and the sea condition will be fairly rough at times in the sea areas extending from Hambantota to Pottuvil.



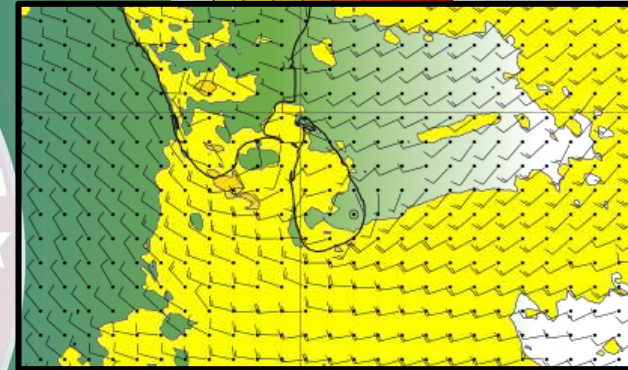
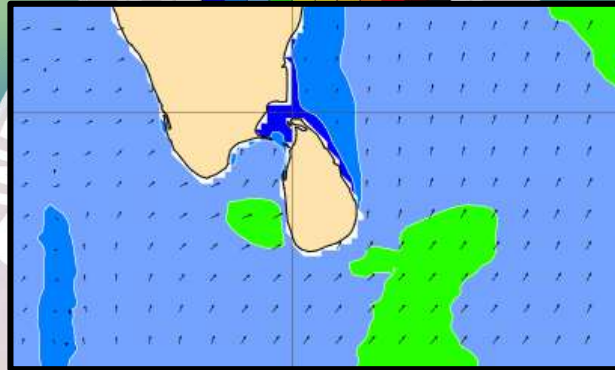
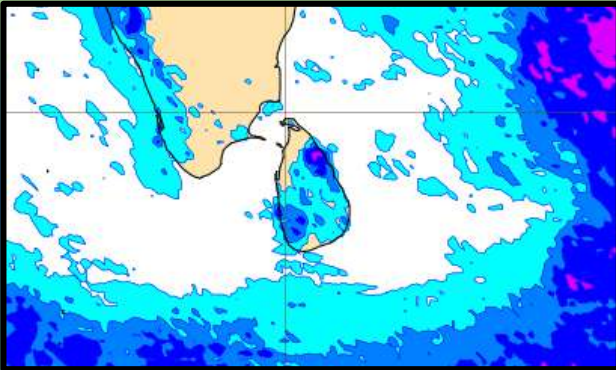
## Wind and Rainfall Forecast (Total precipitation for 24 hrs)



## Significant wave height (in meters)

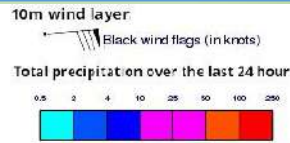


## Wind Gust (m/s)

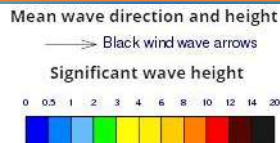


Showers will occur at a few places in the sea areas off the coast extending from Colombo to Matara via Galle. Wind speed will be 20-30 kmph.

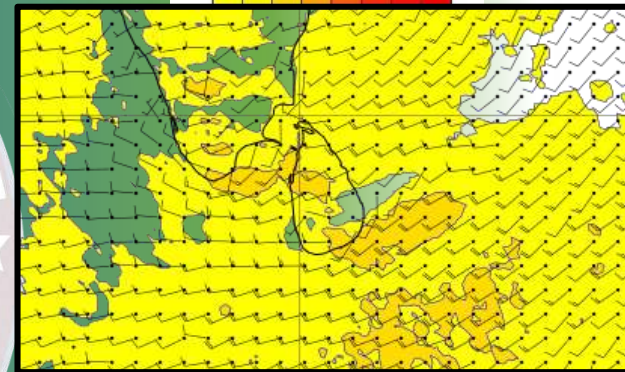
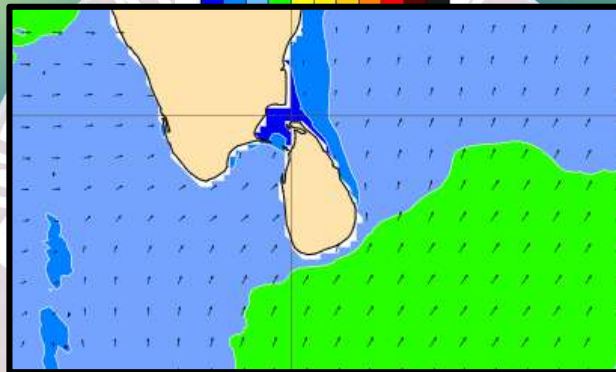
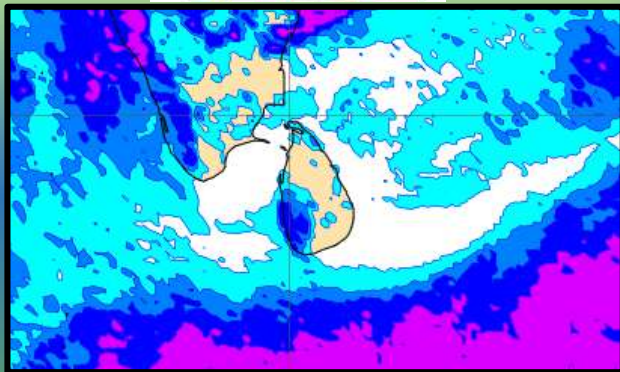
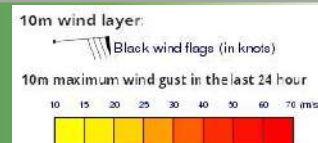
## Wind and Rainfall Forecast (Total precipitation for 24 hrs)



## Significant wave height (in meters)



## Wind Gust (m/s)



Showers will occur at a few places in the sea areas off the coast extending from Puttalam to Matara via Colombo and Galle.

Wind speed will be 25-35 kmph. Wind speed can increase up to 50-55 kmph at times and the sea condition will be rough at times in the sea areas extending from Puttalam to Mannar and from Matara to Pottuvil via Hambantota.

# Thank you !

