

08 DAYS WEATHER FORECAST FOR COASTAL AREAS AROUND SRI LANKA

Storm Direction

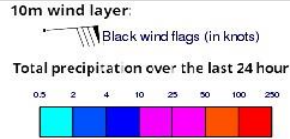


**INFORMATION FUSION CENTRE
COLOMBO**

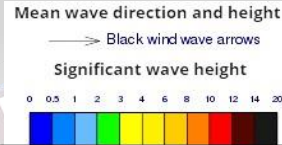


Issued at 0400 p.m. on 12th August 2025
Marine Weather Division, National Meteorological Centre, Department of
Meteorology, Sri Lanka

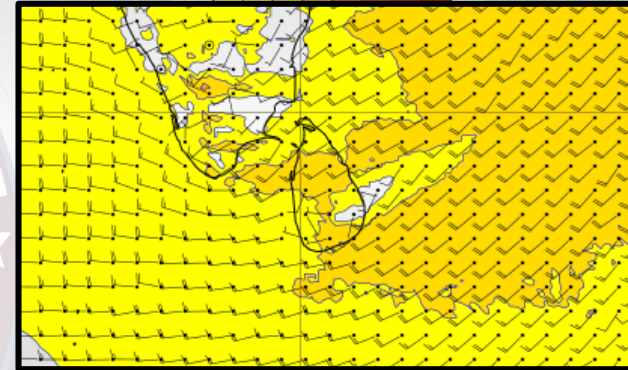
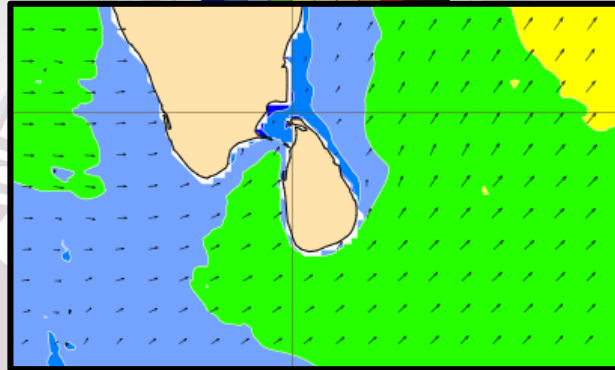
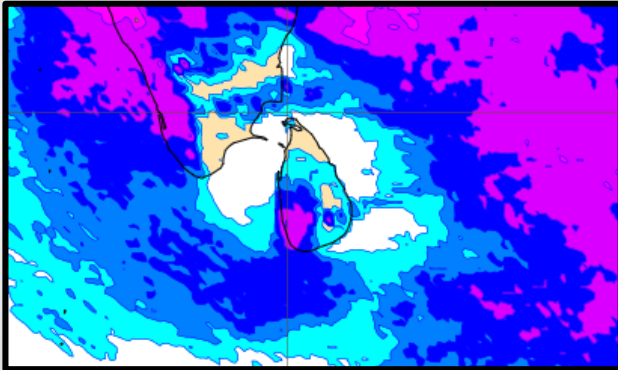
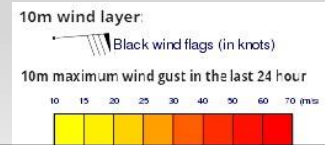
Wind and Rainfall Forecast (Total precipitation for 24 hrs)



Significant wave height (in meters)



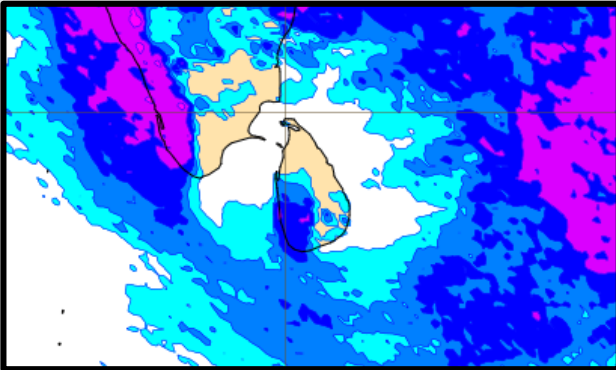
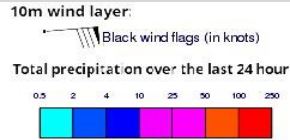
Wind Gust (m/s)



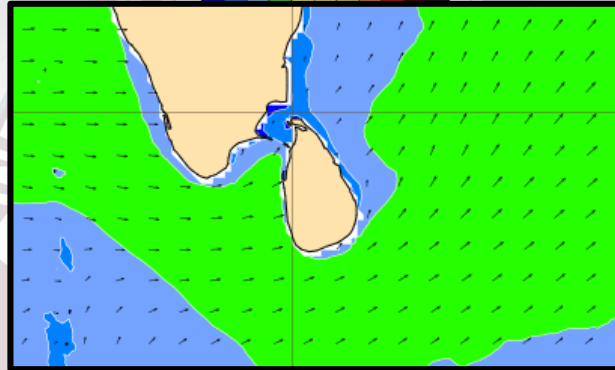
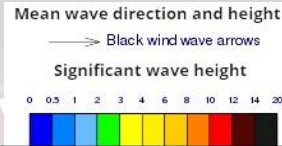
Showers will occur at a few places in the sea areas off the coast extending from Puttalam to Matara via Colombo and Galle.

Wind speed will be 30-40 kmph. Wind speed can increase up to 50-55 kmph at times and the sea condition will be rough at times in the sea areas extending from Puttalam to Mullaitivu via Kankasanturai and from Matara to Pottuvil via Hambantota

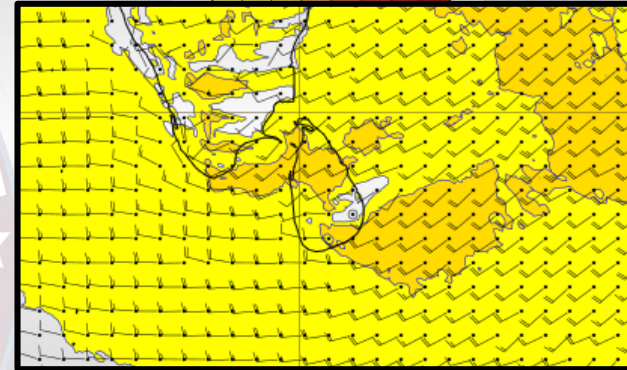
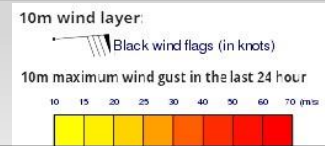
Wind and Rainfall Forecast (Total precipitation for 24 hrs)



Significant wave height (in meters)



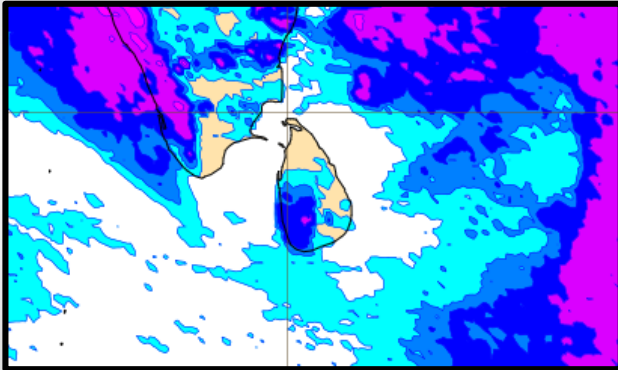
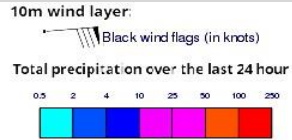
Wind Gust (m/s)



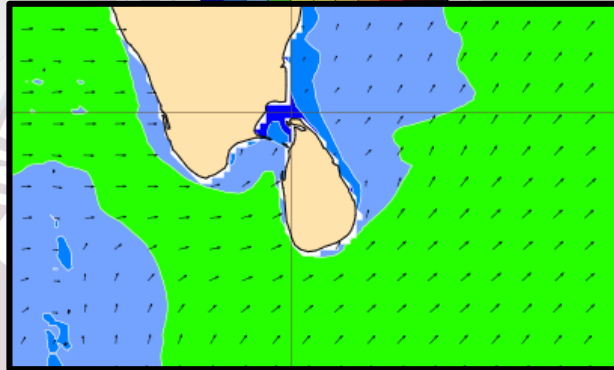
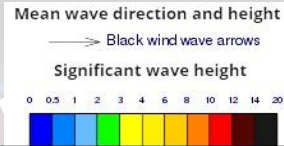
Showers will occur at a few places in the sea areas off the coast extending from Puttalam to Matara via Colombo and Galle.

Wind speed will be 30-40 kmph. Wind speed can increase up to 50-55 kmph at times and the sea condition will be rough at times in the sea areas extending from Puttalam to Mullaitivu via Kankasanturai and from Galle to Pottuvil via Matara and Hambantota.

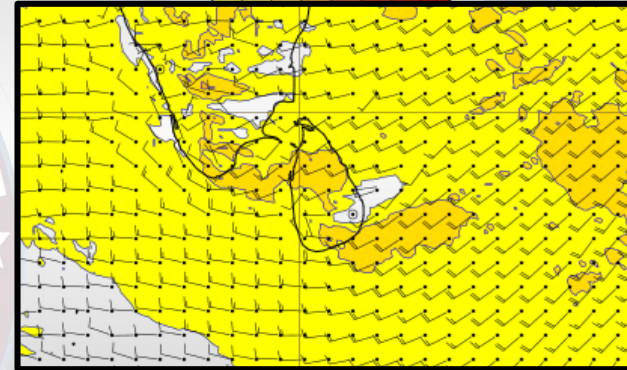
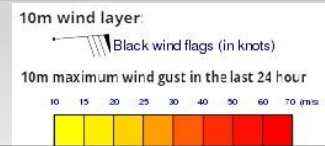
Wind and Rainfall Forecast (Total precipitation for 24 hrs)



Significant wave height (in meters)



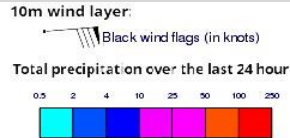
Wind Gust (m/s)



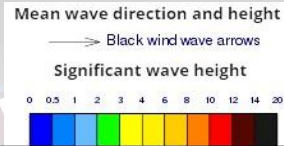
Showers will occur at a few places in the sea areas off the coast extending from Puttalam to Matara via Colombo and Galle.

Wind speed will be 30-40 kmph. Wind speed can increase up to 50-55 kmph at times and the sea condition will be rough at times in the sea areas extending from Puttalam to Mannar and from Matara to Pottuvil via Hambantota.

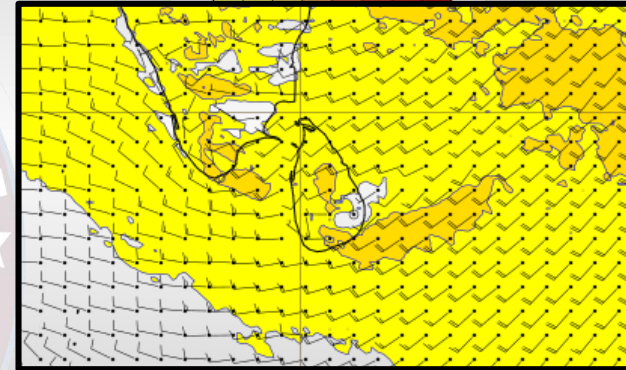
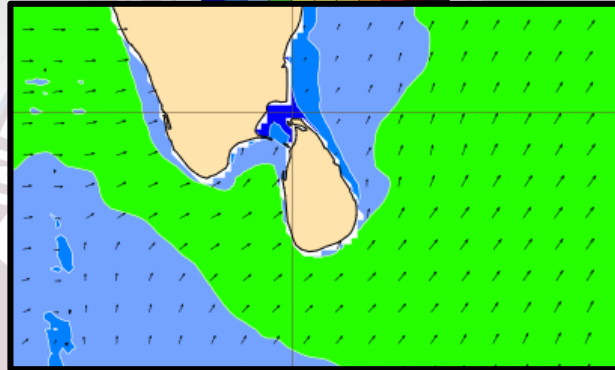
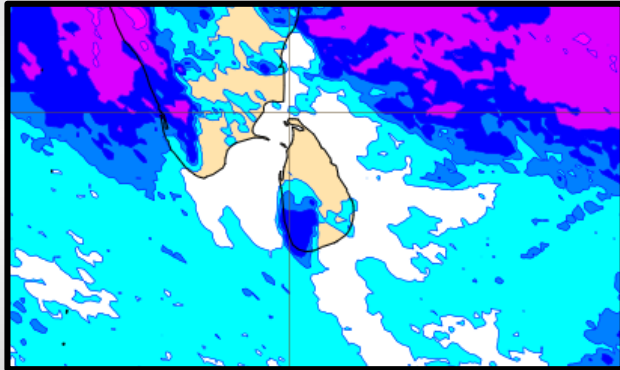
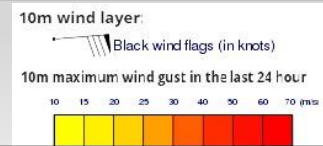
Wind and Rainfall Forecast (Total precipitation for 24 hrs)



Significant wave height (in meters)



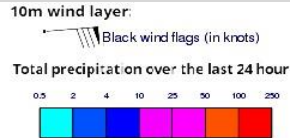
Wind Gust (m/s)



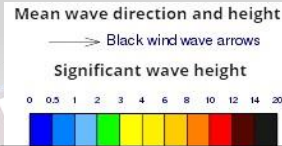
Showers will occur at a few places in the sea areas off the coast extending from Puttalam to Matara via Colombo and Galle.

Wind speed will be 30-40 kmph. Wind speed can increase up to 50-55 kmph at times and the sea condition will be rough at times in the sea areas extending from Matara to Pottuvil via Hambantota.

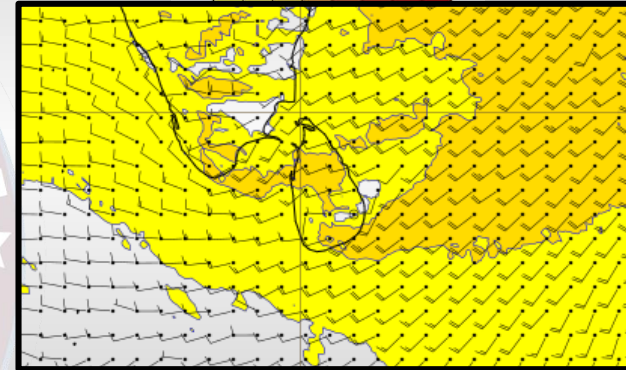
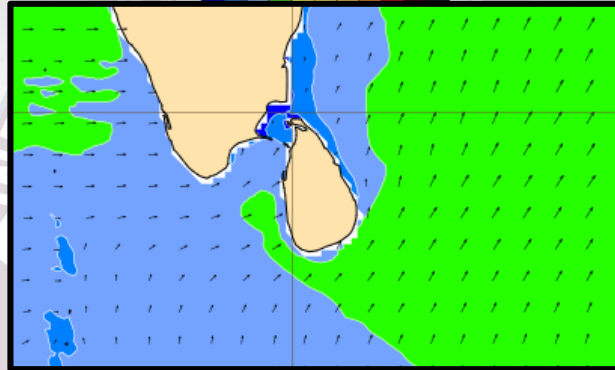
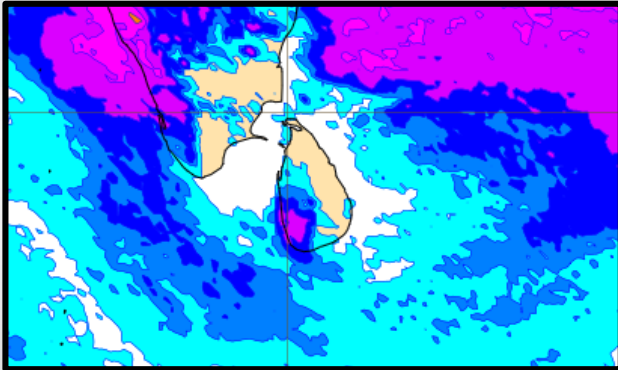
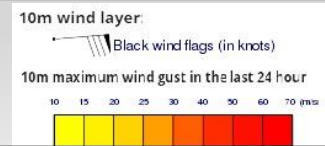
Wind and Rainfall Forecast (Total precipitation for 24 hrs)



Significant wave height (in meters)



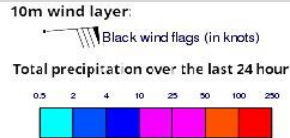
Wind Gust (m/s)



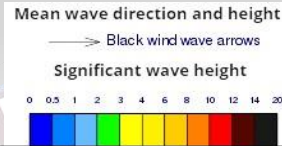
Showers will occur at a few places in the sea areas off the coast extending from Puttalam to Matara via Colombo and Galle.

Wind speed will be 30-40 kmph. Wind speed can increase up to 50 kmph at times and the sea condition will be fairly rough at times in the sea areas extending from Puttalam to Mannar and from Matara to Pottuvil via Hambantota.

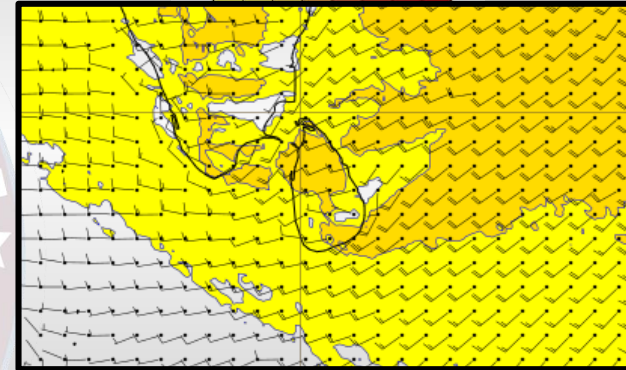
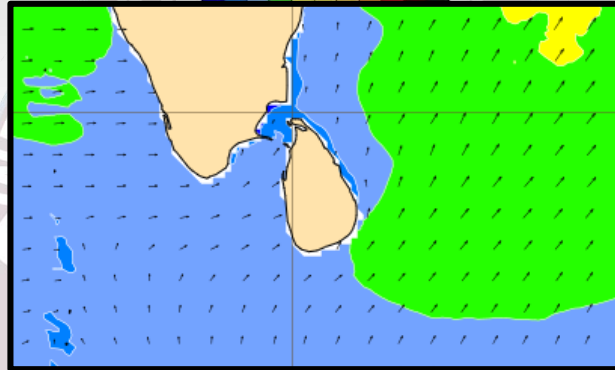
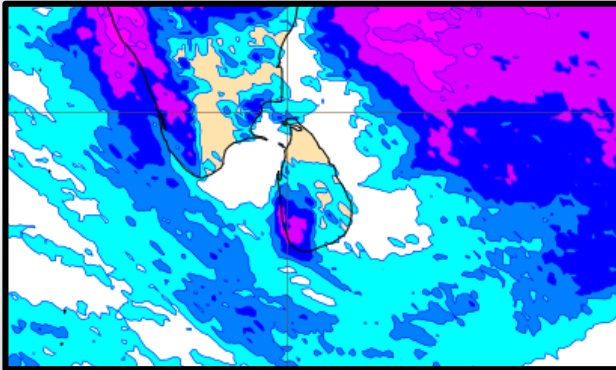
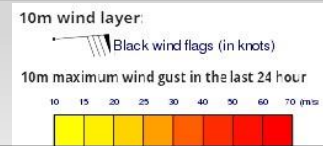
Wind and Rainfall Forecast (Total precipitation for 24 hrs)



Significant wave height (in meters)



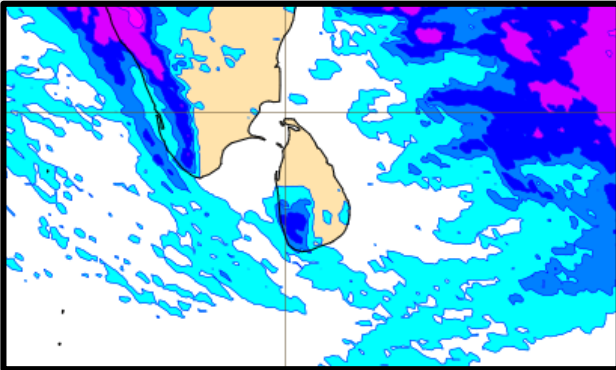
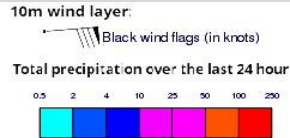
Wind Gust (m/s)



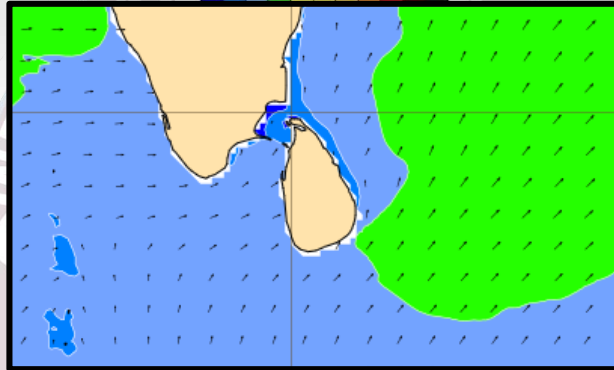
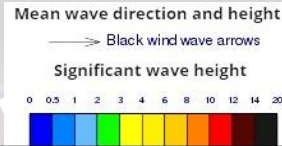
Showers will occur at a few places in the sea areas off the coast extending from Puttalam to Matara via Colombo and Galle.

Wind speed will be 30-40 kmph. Wind speed can increase up to 50 kmph at times and the sea condition will be fairly rough at times in the sea areas extending from Puttalam to Mannar and from Matara to Pottuvil via Hambantota.

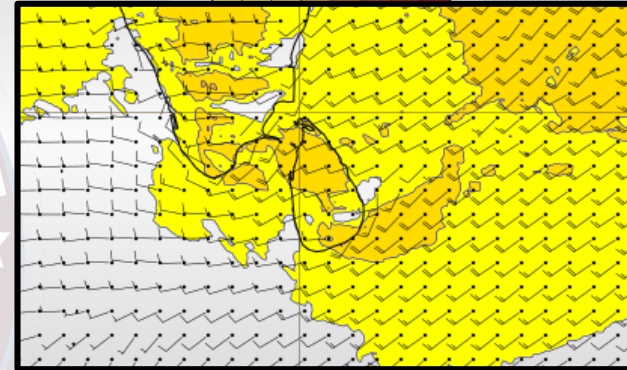
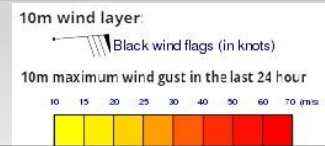
Wind and Rainfall Forecast (Total precipitation for 24 hrs)



Significant wave height (in meters)

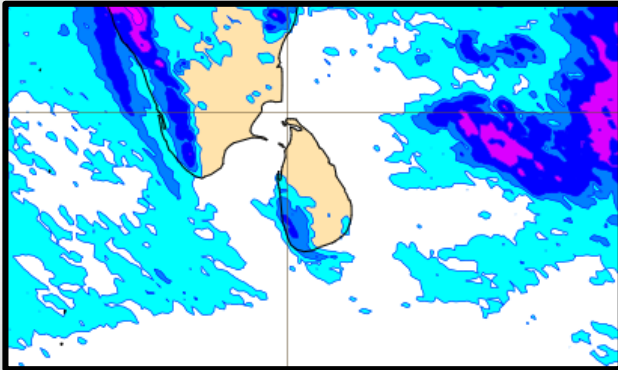
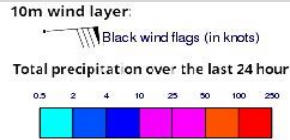


Wind Gust (m/s)

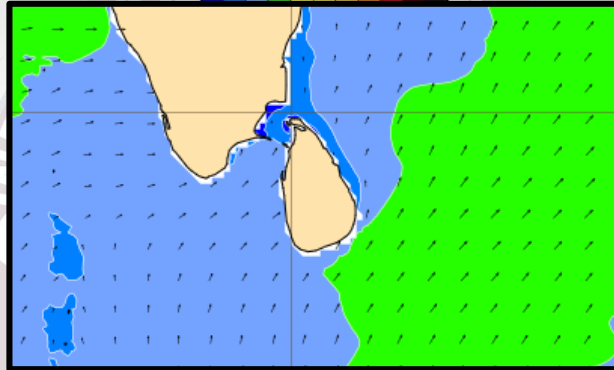
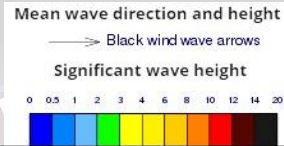


Showers will occur at a few places in the sea areas off the coast extending from Colombo to Matara via Galle. Wind speed will be 20-30 kmph. Wind speed can increase up to 45-50 kmph at times and the sea condition will be fairly rough at times in the sea areas extending from Puttalam to Kankasanturai via Mannar and from Matara to Pottuvil via Hambantota.

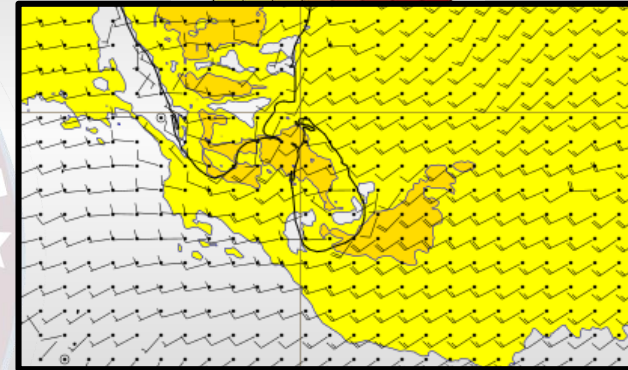
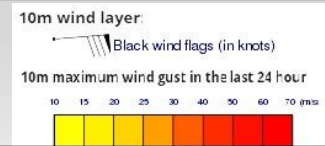
Wind and Rainfall Forecast (Total precipitation for 24 hrs)



Significant wave height (in meters)



Wind Gust (m/s)



Showers will occur at a few places in the sea areas off the coast extending from Colombo to Matara via Galle. Wind speed will be 20-30 kmph. Wind speed can increase up to 45-50 kmph at times and the sea condition will be fairly rough at times in the sea areas extending from Puttalam to Kankasanturai via Mannar and from Matara to Pottuvil via Hambantota.

Thank you !

