

08 DAYS WEATHER FORECAST FOR COASTAL AREAS AROUND SRI LANKA

Storm Direction



WARNING

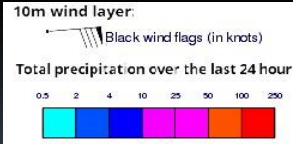


**INFORMATION FUSION CENTRE
COLOMBO**

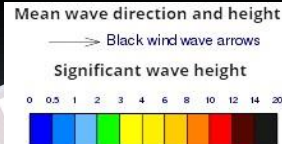


Issued at 0400 p.m. on 20th May 2025
Marine Weather Division, National Meteorological Centre, Department of
Meteorology, Sri Lanka

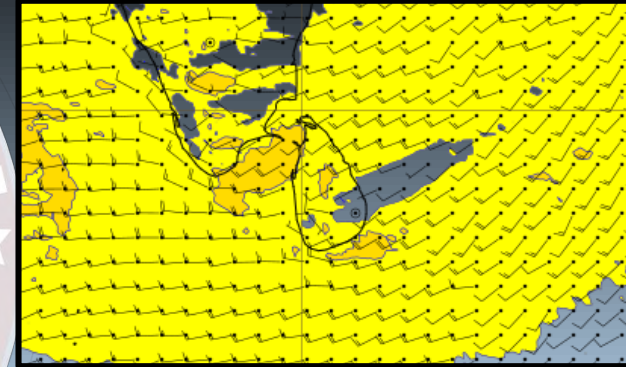
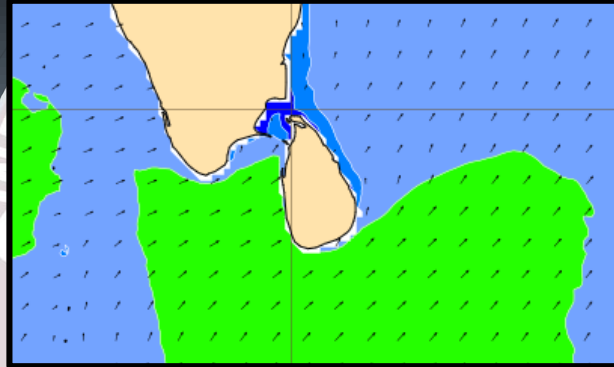
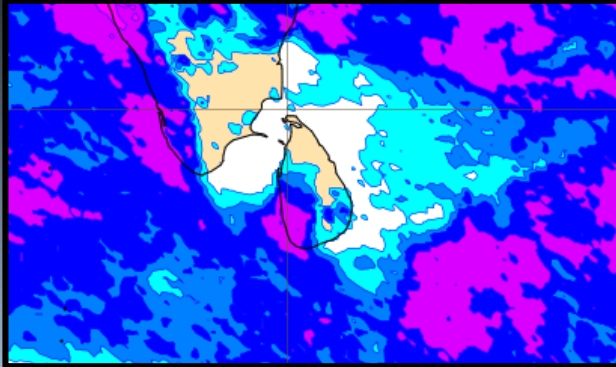
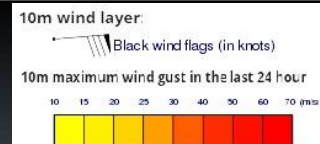
Wind and Rainfall Forecast (Total precipitation for 24 hrs)



Significant wave height (in meters)



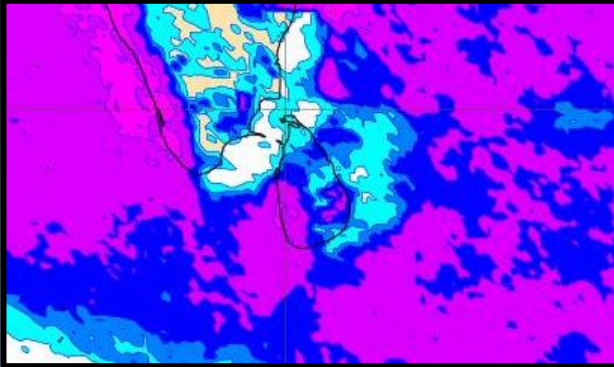
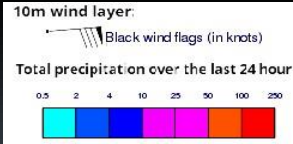
Wind Gust (m/s)



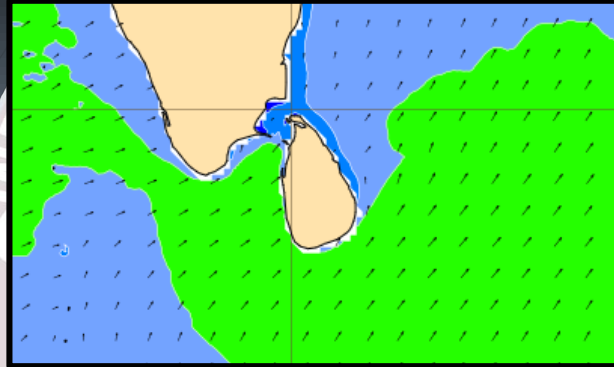
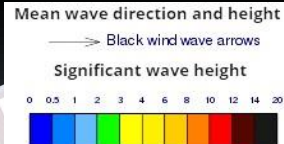
Showers or thundershowers will occur at several places in the sea areas extending from Puttalam to Galle via Colombo. Showers or thundershowers will occur at a few places over the other sea areas around the island.

Wind speed will be (30-40) kmph. Wind speed can increase up to 65 kmph at times and the sea condition will be rough at times in the sea areas extending from Galle to Hambantota via Matara and from Kankasanturai to Puttalam via Mannar. Wind speed can increase up to 45-55 kmph at times and the sea condition will be fairly rough at times in the other sea areas around the island. Naval and fishing communities are requested to be vigilant in this regard.

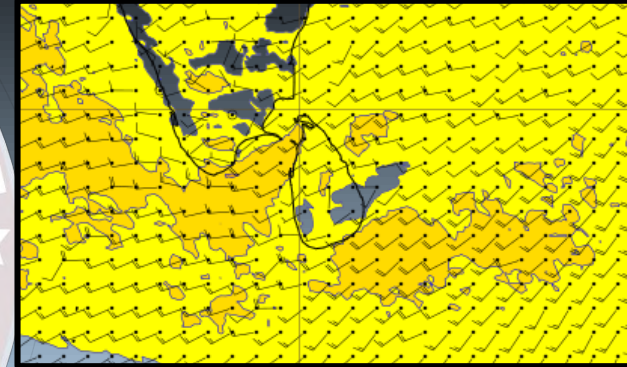
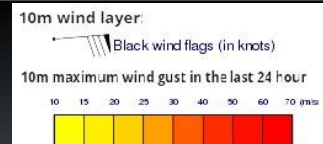
Wind and Rainfall Forecast (Total precipitation for 24 hrs)



Significant wave height (in meters)



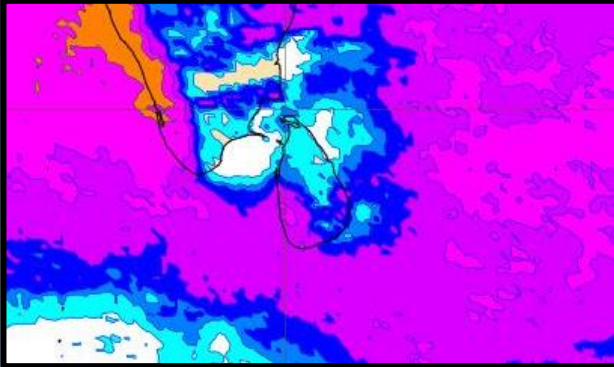
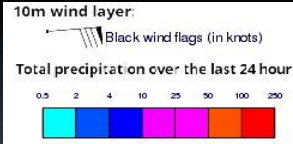
Wind Gust (m/s)



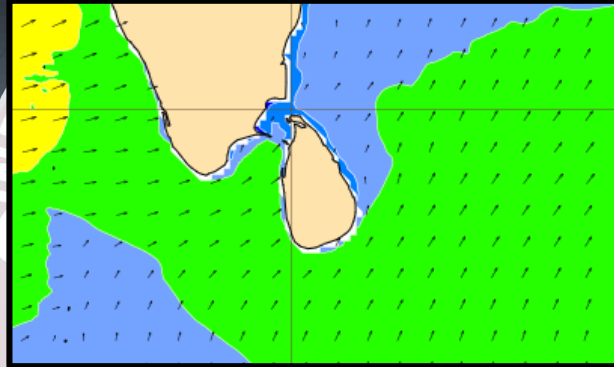
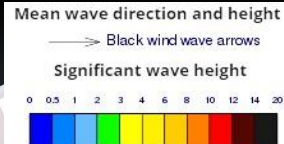
Showers or thundershowers will occur at several places in the sea areas extending from Puttalam to Galle via Colombo. Showers or thundershowers will occur at a few places over the other sea areas around the island.

Wind speed will be (30-40) kmph. Wind speed can increase up to 65 kmph at times and the sea condition will be rough at times in the sea areas extending from Galle to Hambantota via Matara and from Kankasanturai to Puttalam via Mannar. Wind speed can increase up to 45-55 kmph at times and the sea condition will be fairly rough at times in the other sea areas around the island. Naval and fishing communities are requested to be vigilant in this regard.

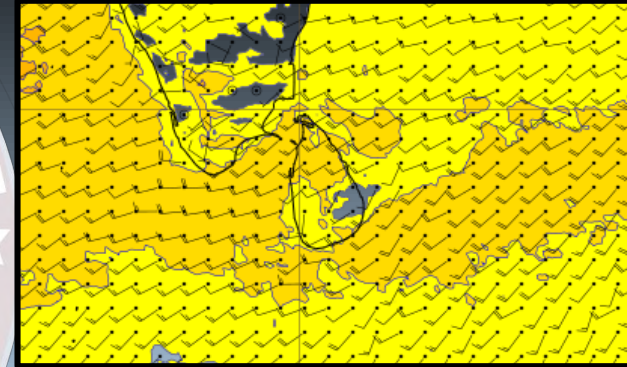
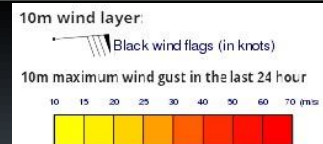
Wind and Rainfall Forecast (Total precipitation for 24 hrs)



Significant wave height (in meters)



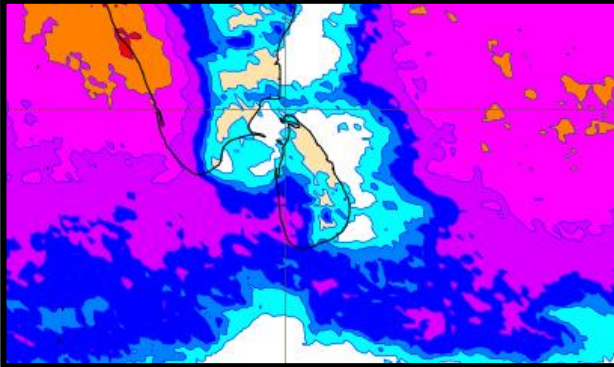
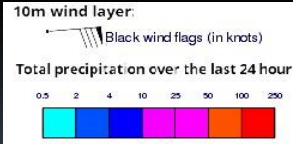
Wind Gust (m/s)



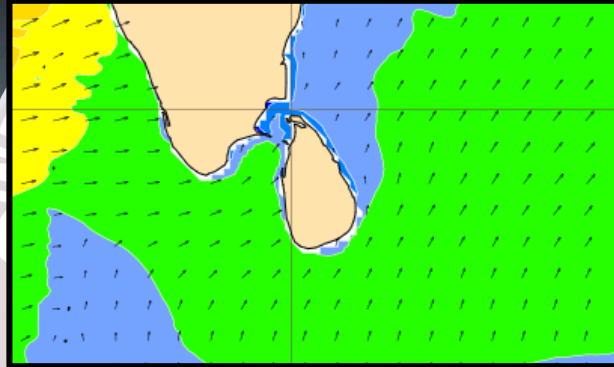
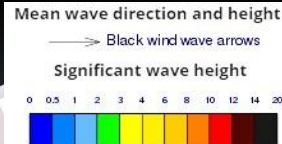
Showers or thundershowers will occur at several places over the sea areas around the island.

Wind speed will be (30-40) kmph. Wind speed can increase up to 65 kmph at times and the sea condition will be rough at times in the sea areas extending from Mannar to Hambantota via Colombo and Galle. Wind speed can increase up to 45-55 kmph at times and the sea condition will be fairly rough at times in the other sea areas around the island. Naval and fishing communities are requested to be vigilant in this regard.

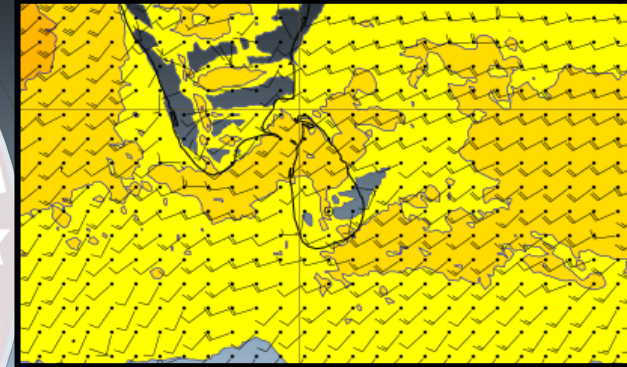
Wind and Rainfall Forecast (Total precipitation for 24 hrs)



Significant wave height (in meters)



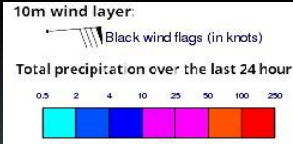
Wind Gust (m/s)



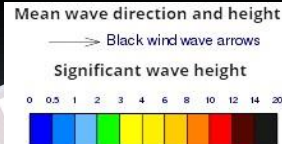
Showers or thundershowers will occur at several places in the sea areas extending from Puttalam to Galle via Colombo. Showers or thundershowers will occur at a few places over the other sea areas around the island.

Wind speed will be (30-40) kmph. Wind speed can increase up to 65 kmph at times and the sea condition will be rough at times in the sea areas extending from Galle to Hambantota via Matara and from Puttalam to Trincomalee via Kankasanturai. Wind speed can increase up to 45-55 kmph at times and the sea condition will be fairly rough at times in the other sea areas around the island. Naval and fishing communities are requested to be vigilant in this regard.

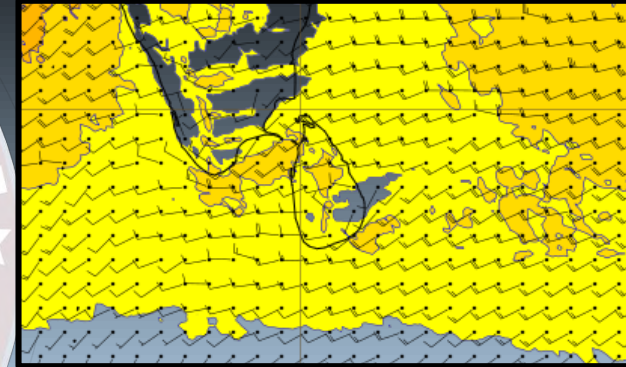
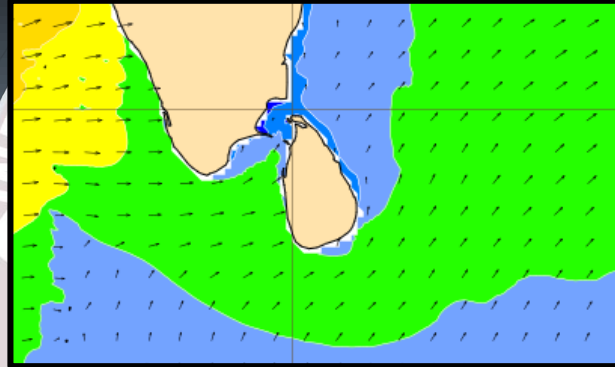
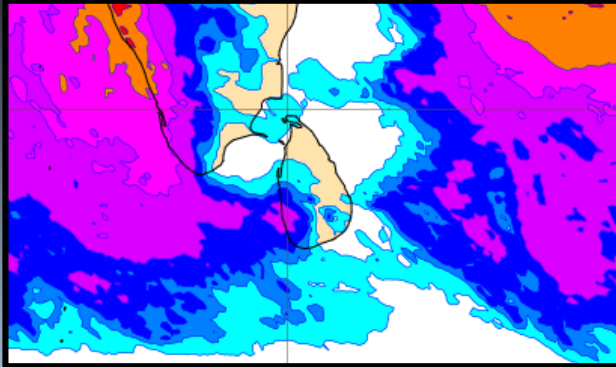
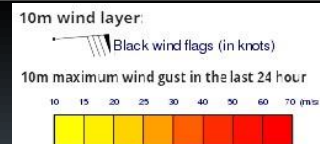
Wind and Rainfall Forecast (Total precipitation for 24 hrs)



Significant wave height (in meters)



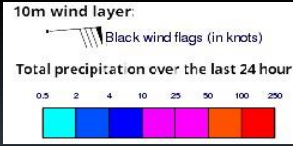
Wind Gust (m/s)



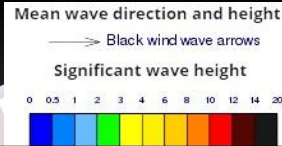
Showers or thundershowers will occur at several places in the sea areas extending from Puttalam to Galle via Colombo. Showers or thundershowers will occur at a few places over the other sea areas around the island.

Wind speed will be (30-40) kmph. Wind speed can increase up to 65 kmph at times and the sea condition will be rough at times in the sea areas extending from Galle to Hambantota via Matara and from Kankasanturai to Puttalam via Mannar. Wind speed can increase up to 45-55 kmph at times and the sea condition will be fairly rough at times in the other sea areas around the island. Naval and fishing communities are requested to be vigilant in this regard.

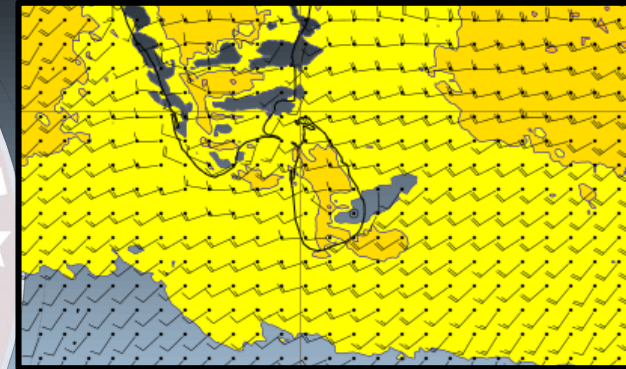
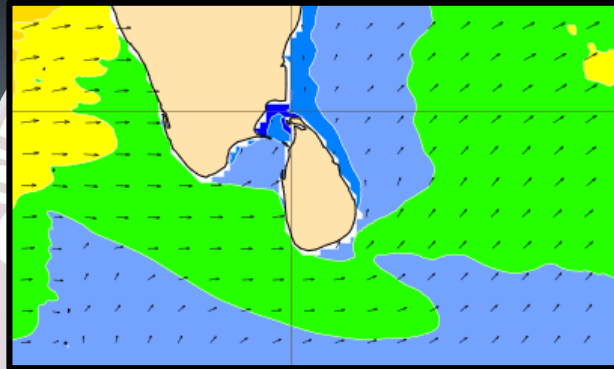
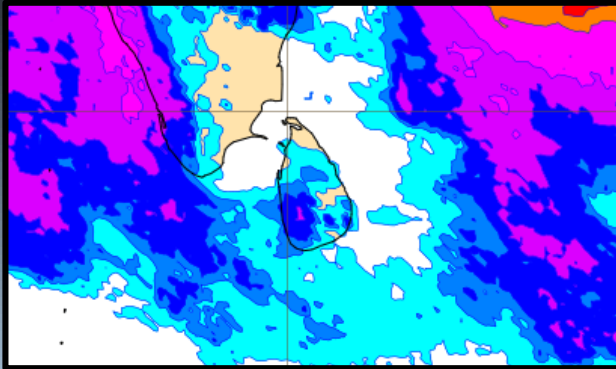
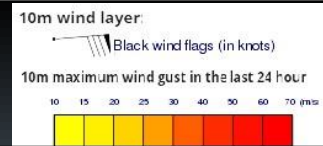
Wind and Rainfall Forecast (Total precipitation for 24 hrs)



Significant wave height (in meters)



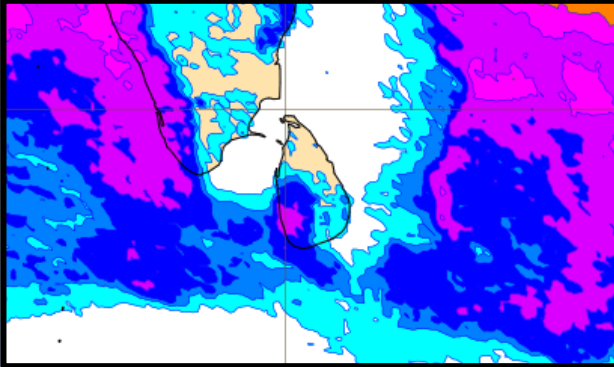
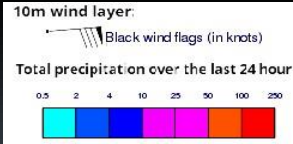
Wind Gust (m/s)



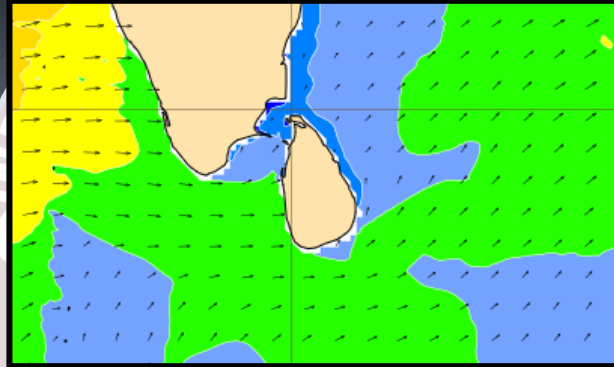
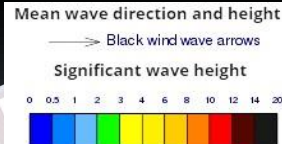
Showers or thundershowers will occur at several places in the sea areas extending from Puttalam to Galle via Colombo. Showers or thundershowers will occur at a few places over the other sea areas around the island.

Wind speed will be (30-40) kmph. Wind speed can increase up to 60 kmph at times and the sea condition will be rough at times in the sea areas extending from Matara to Hambantota and from Puttalam to Mannar. Wind speed can increase up to 50 kmph at times and the sea condition will be fairly rough at times in the other sea areas around the island. Naval and fishing communities are requested to be vigilant in this regard.

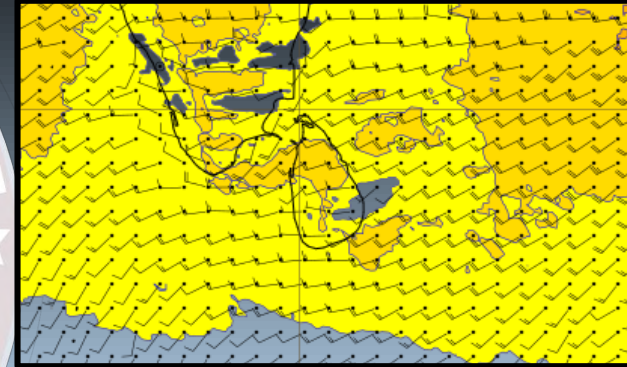
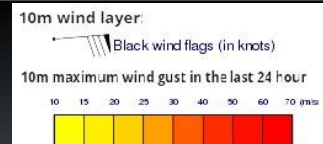
Wind and Rainfall Forecast (Total precipitation for 24 hrs)



Significant wave height (in meters)



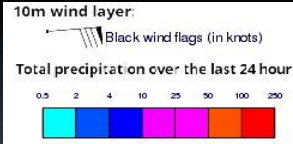
Wind Gust (m/s)



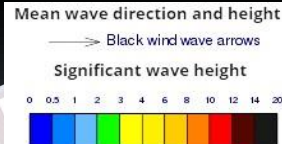
Showers or thundershowers will occur at several places in the sea areas extending from Puttalam to Galle via Colombo. Showers or thundershowers will occur at a few places over the other sea areas around the island.

Wind speed will be (30-40) kmph. Wind speed can increase up to 60 kmph at times and the sea condition will be rough at times in the sea areas extending from Matara to Hambantota and from Puttalam to Mannar to Puttalam. Wind speed can increase up to 45-50 kmph at times and the sea condition will be fairly rough at times in the other sea areas around the island. Naval and fishing communities are requested to be vigilant in this regard.

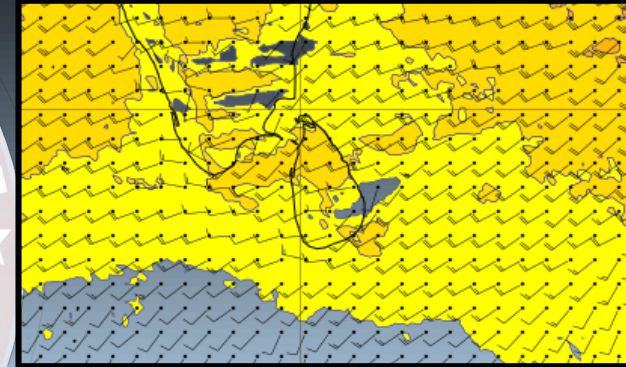
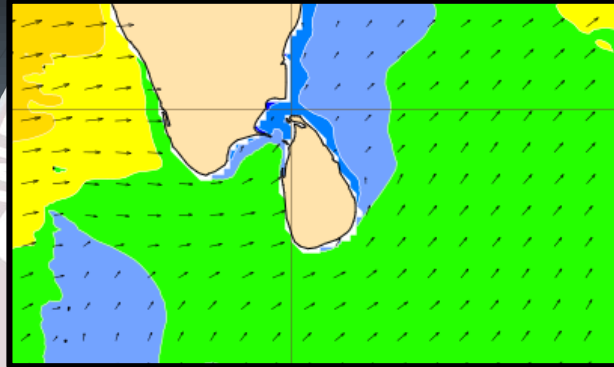
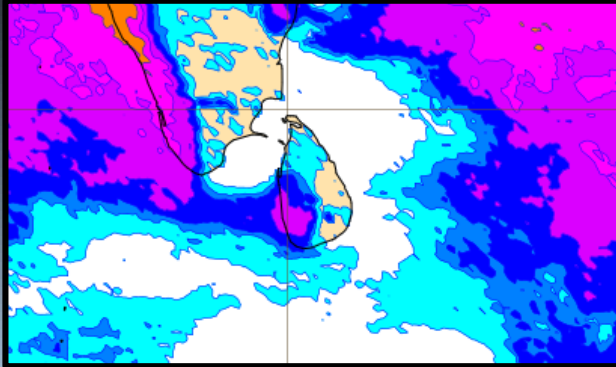
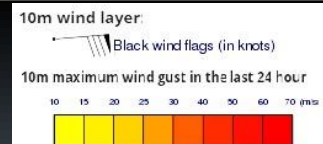
Wind and Rainfall Forecast (Total precipitation for 24 hrs)



Significant wave height (in meters)



Wind Gust (m/s)



Showers or thundershowers will occur at several places in the sea areas extending from Puttalam to Galle via Colombo. Showers or thundershowers will occur at a few places over the other sea areas around the island.

Wind speed will be (30-40) kmph. Wind speed can increase up to 60 kmph at times and the sea condition will be rough at times in the sea areas extending from Galle to Hambantota via Matara and from Puttalam to Kankasanturai via Mannar. Wind speed can increase up to 45-50 kmph at times and the sea condition will be fairly rough at times in the other sea areas around the island. Naval and fishing communities are requested to be vigilant in this regard.



Thank you !