

08 DAYS WEATHER FORECAST FOR COASTAL AREAS AROUND SRI LANKA


Storm Direction



WARNING

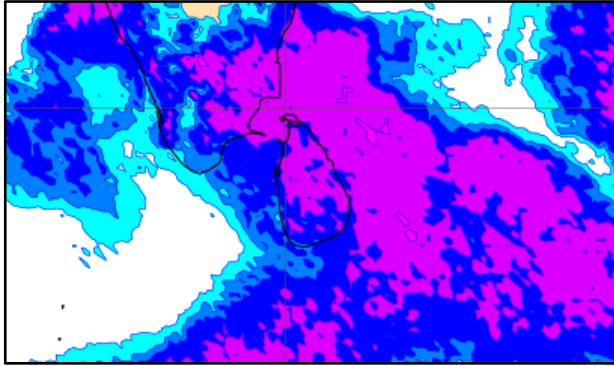
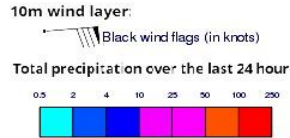


**INFORMATION FUSION CENTRE
COLOMBO**

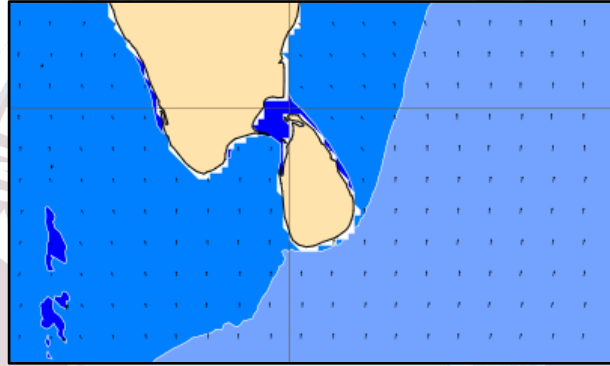
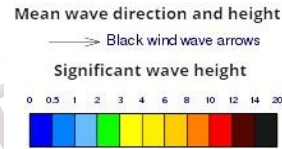


Issued at 0400 p.m. on 01st April 2025
Marine Weather Division, National Meteorological Centre, Department of
Meteorology, Sri Lanka

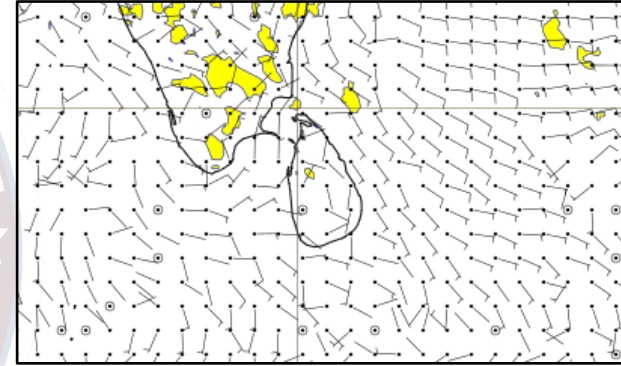
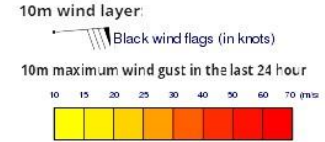
Wind and Rainfall Forecast (Total precipitation for 24 hrs)



Significant wave height (in meters)



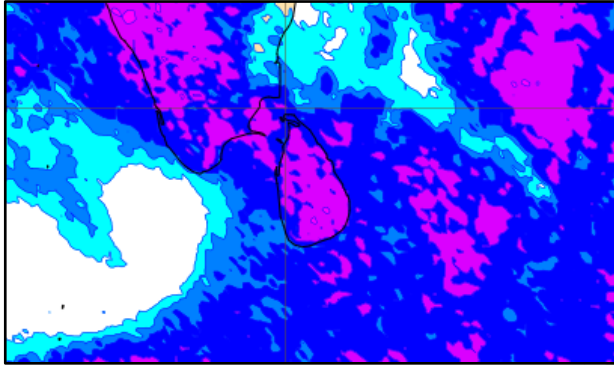
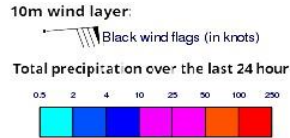
Wind Gust (m/s)



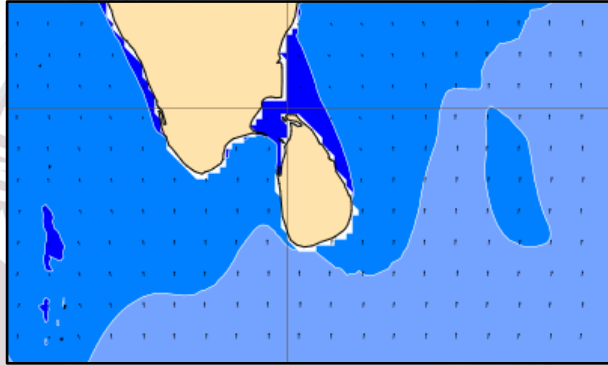
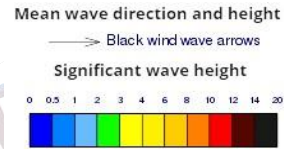
Showers or thundershowers will occur at several places in the sea areas extending from Mannar to Pottuvil via Kankasanturai, and Batticaloa. Showers or thundershowers will occur at a few places over the other sea areas around the island.

Wind speed will be (20-30) kmph.

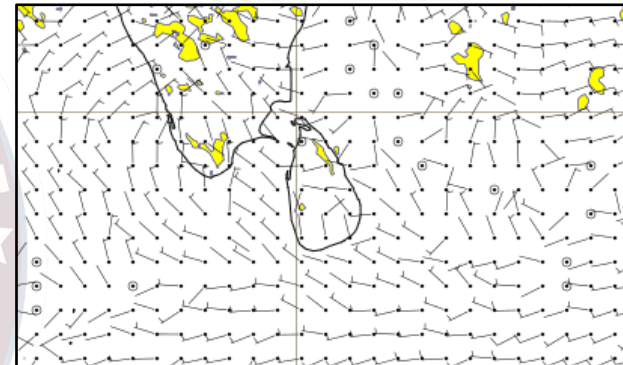
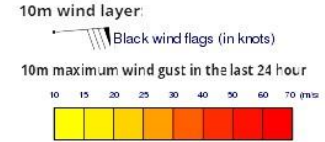
Wind and Rainfall Forecast (Total precipitation for 24 hrs)



Significant wave height (in meters)



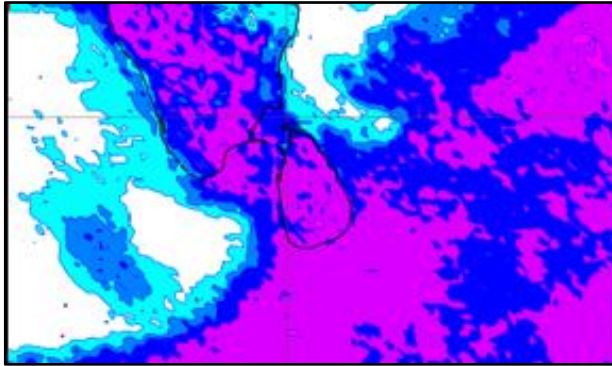
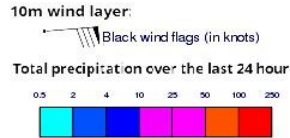
Wind Gust (m/s)



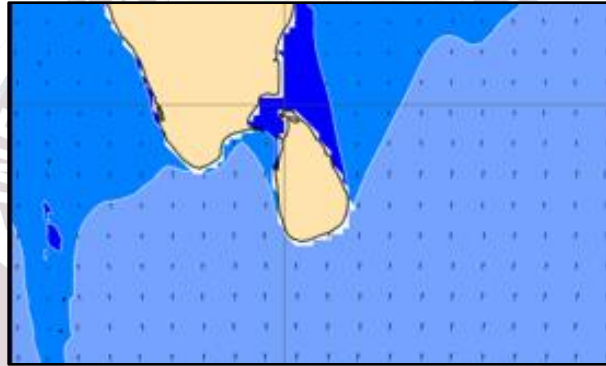
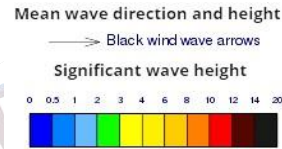
Showers or thundershowers will occur at a several places over the sea areas around the island.

Wind speed will be (20-30) kmph.

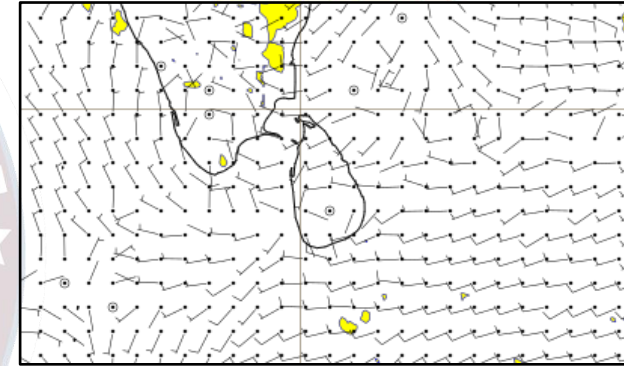
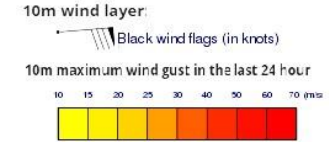
Wind and Rainfall Forecast (Total precipitation for 24 hrs)



Significant wave height (in meters)



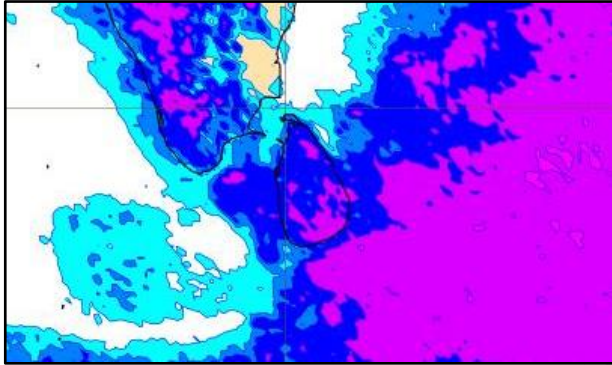
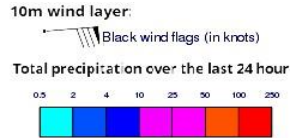
Wind Gust (m/s)



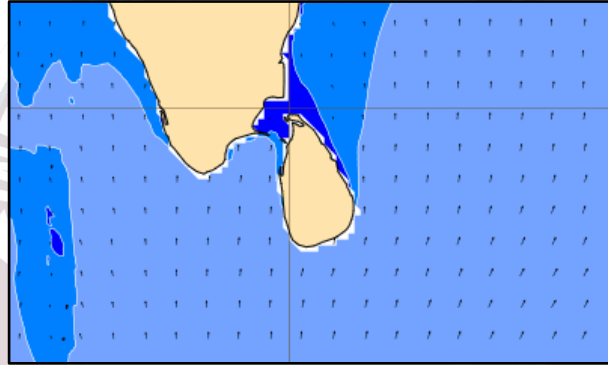
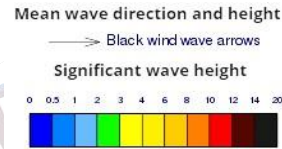
Showers or thundershowers will occur at several places in the sea areas extending from Puttalam to Pottuvil via Colombo and Galle. Showers or thundershowers will occur at a few places over the other sea areas around the island.

Wind speed will be (25-35) kmph.

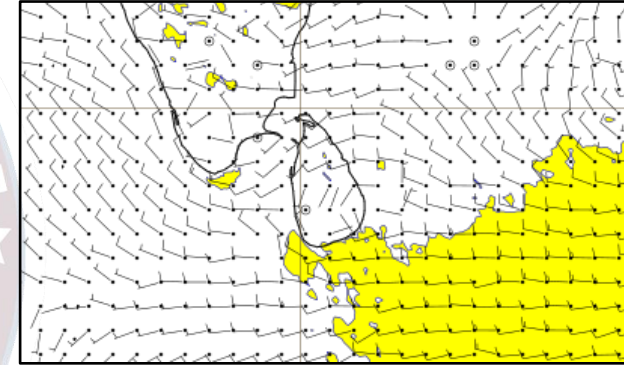
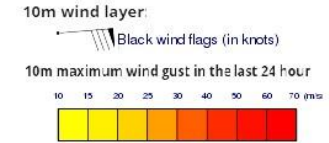
Wind and Rainfall Forecast (Total precipitation for 24 hrs)



Significant wave height (in meters)



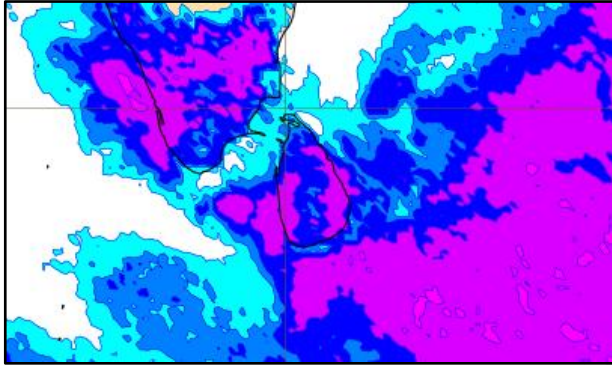
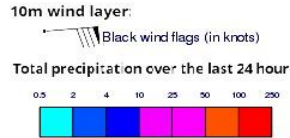
Wind Gust (m/s)



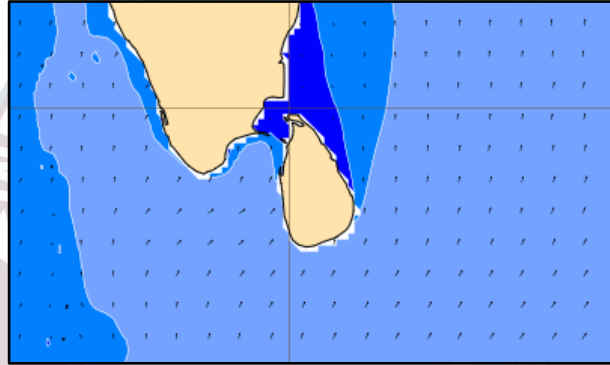
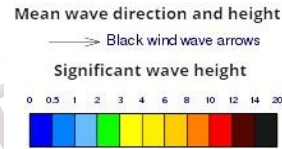
Showers or thundershowers will occur at several places in the sea areas around the island.

Wind speed will be (20-30) kmph. Wind speed can increase up to 45 kmph at times and the sea condition will be fairly rough at times in the sea areas extending from Pottuvil to Galle via Hambantota.

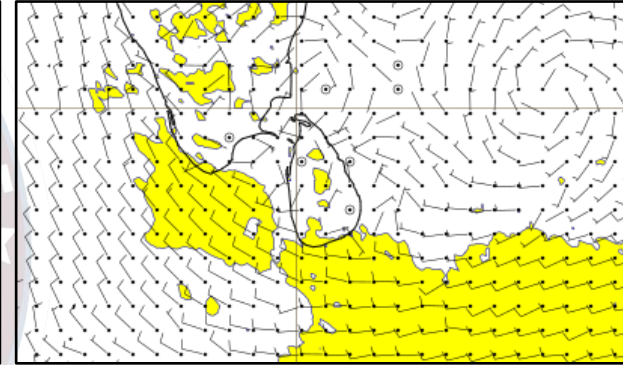
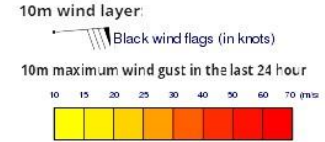
Wind and Rainfall Forecast (Total precipitation for 24 hrs)



Significant wave height (in meters)



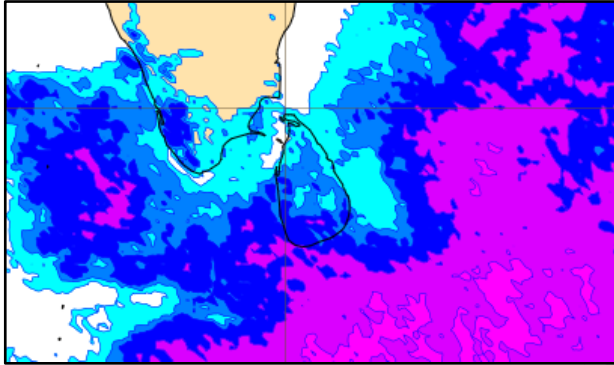
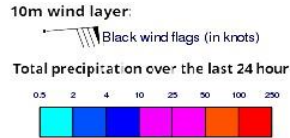
Wind Gust (m/s)



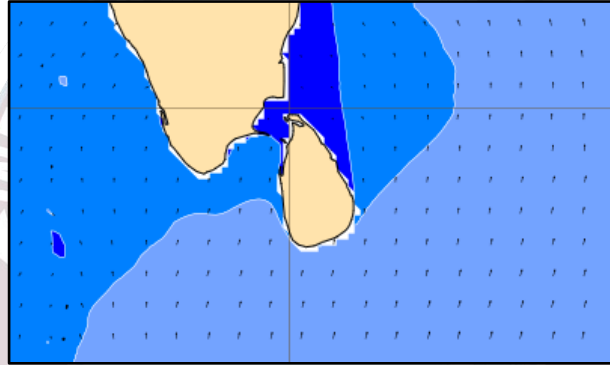
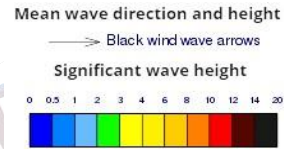
Showers or thundershowers will occur at several places in the sea areas around the island.

Wind speed will be (20-30) kmph. Wind speed can increase up to 45 kmph at times and the sea condition will be fairly rough at times in the sea areas extending from Pottuvil to Galle via Hambantota.

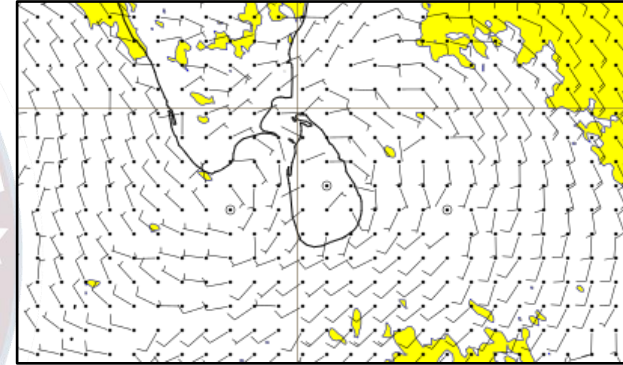
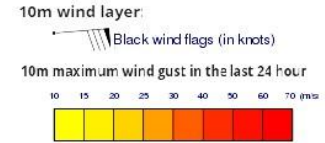
Wind and Rainfall Forecast (Total precipitation for 24 hrs)



Significant wave height (in meters)



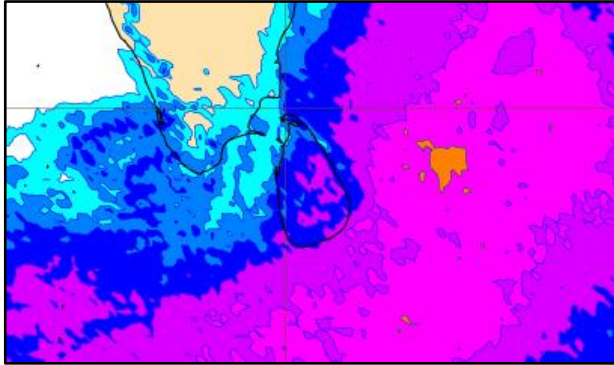
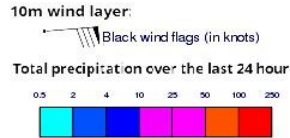
Wind Gust (m/s)



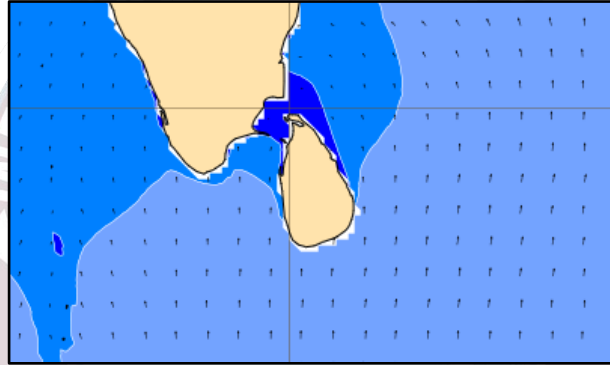
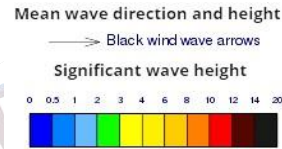
Showers or thundershowers will occur at several places in the sea areas around the island.

Wind speed will be (20-30) kmph.

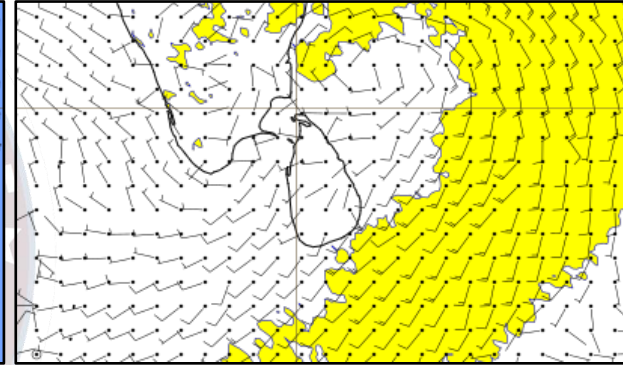
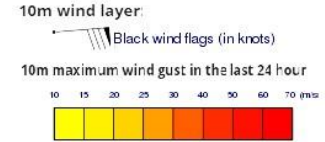
Wind and Rainfall Forecast (Total precipitation for 24 hrs)



Significant wave height (in meters)



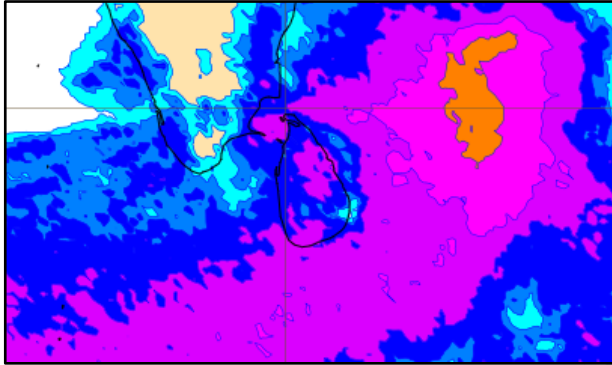
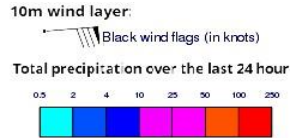
Wind Gust (m/s)



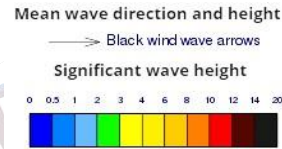
Showers or thundershowers will occur at several places in the sea areas extending from Pottuvil to Galle via Hambantota. Showers or thundershowers will occur at a few places over the other sea areas around the island.

Wind speed will be (20-30) kmph. Wind speed can increase up to 45 kmph at times and the sea condition will be fairly rough at times in the sea areas extending from Pottuvil to Hambantota.

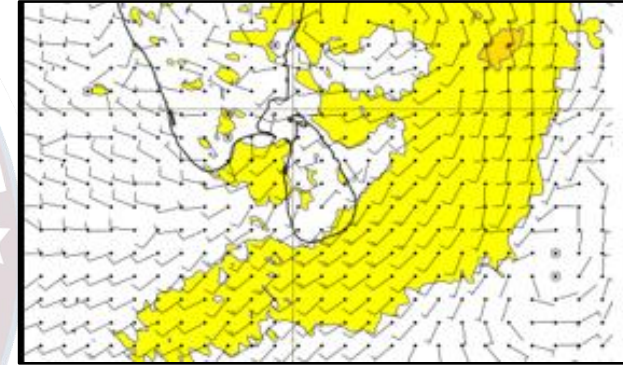
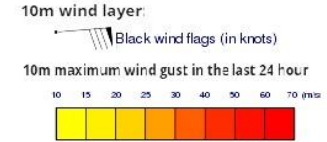
Wind and Rainfall Forecast (Total precipitation for 24 hrs)



Significant wave height (in meters)



Wind Gust (m/s)



Showers or thundershowers will occur at several places in the sea areas extending from Pottuvil to Galle via Hambantota. Showers or thundershowers will occur at a few places over the other sea areas around the island.

Wind speed will be (20-30) kmph. Wind speed can increase up to 45 kmph at times and the sea condition will be fairly rough at times in the sea areas extending from Pottuvil to Galle via Hambantota.

The logo is a circular emblem. The outer ring contains the text 'INFORMATION FUSION CENTRE' at the top and 'COLOMBO - SRI LANKA' at the bottom. The inner circle features a map of the Indian subcontinent and surrounding regions, with a blue ocean area below it.

Thank you!