


08 DAYS WEATHER FORECAST FOR COASTAL AREAS AROUND SRI LANKA

arm Direction

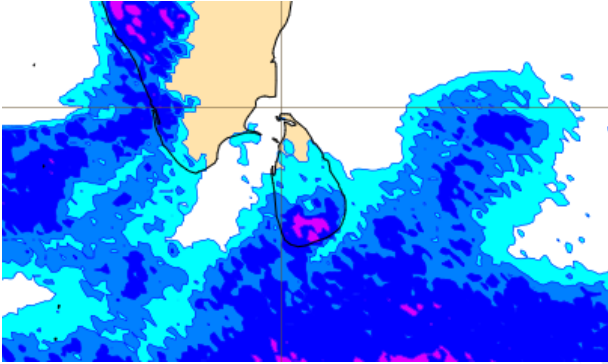
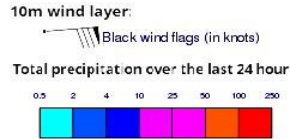


**INFORMATION FUSION CENTRE
COLOMBO**

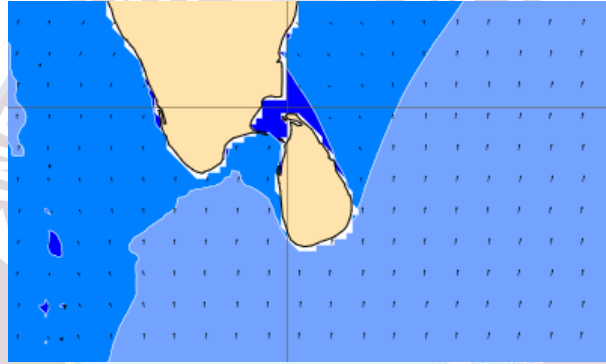
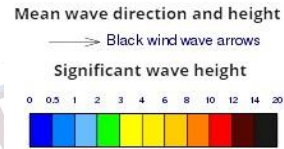


Issued at 0400 p.m. on 24th March 2025
Marine Weather Division, National Meteorological Centre, Department of
Meteorology, Sri Lanka

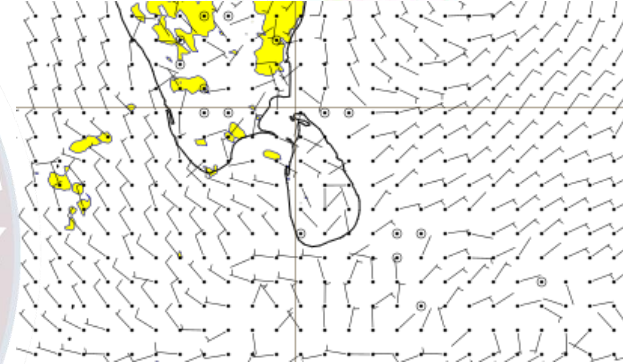
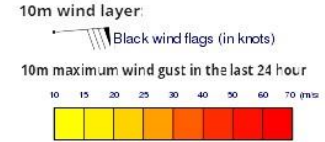
Wind and Rainfall Forecast (Total precipitation for 24 hrs)



Significant wave height (in meters)



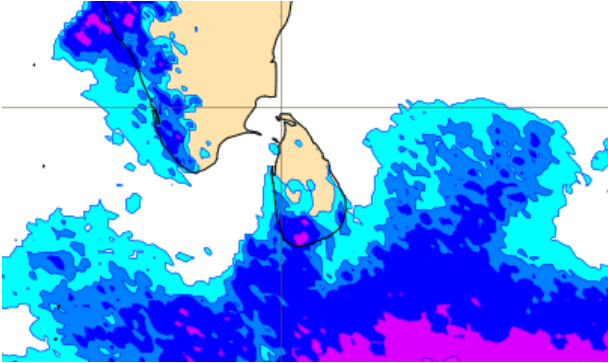
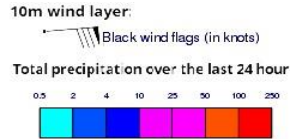
Wind Gust (m/s)



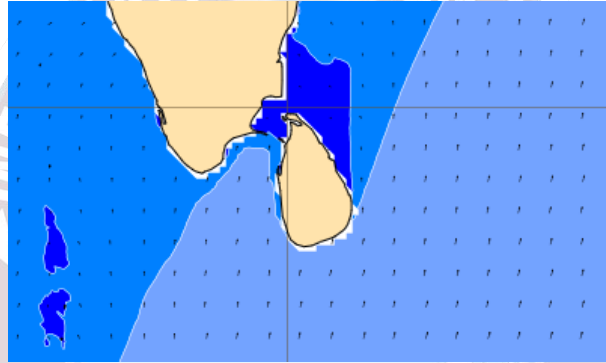
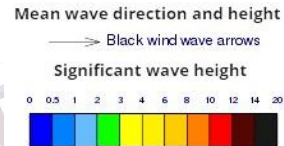
Showers or thundershowers will occur at several places in the sea areas extending from Puttalam to Batticaloa via Colombo, Galle and Hambantota. Showers or thundershowers will occur at a few places over the other sea areas around the island.

Wind speed will be (25-35) kmph.

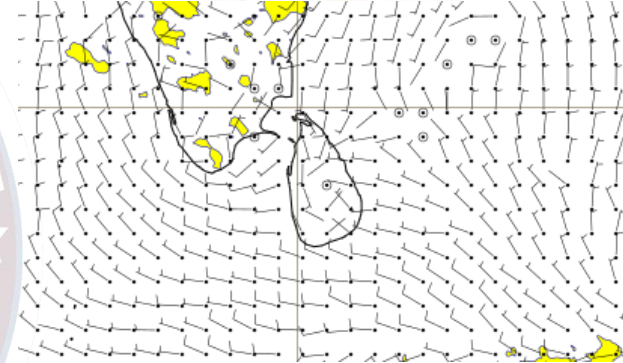
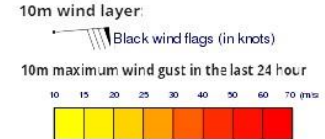
Wind and Rainfall Forecast (Total precipitation for 24 hrs)



Significant wave height (in meters)



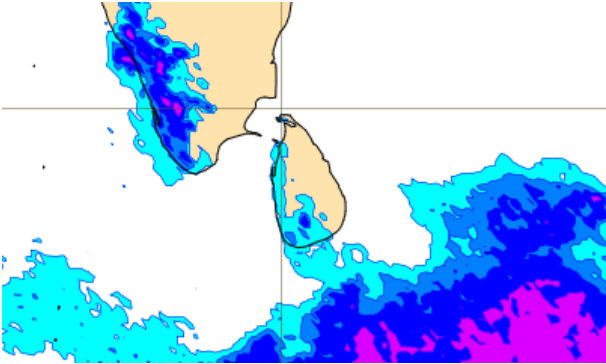
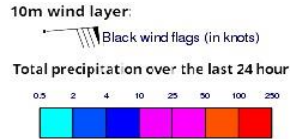
Wind Gust (m/s)



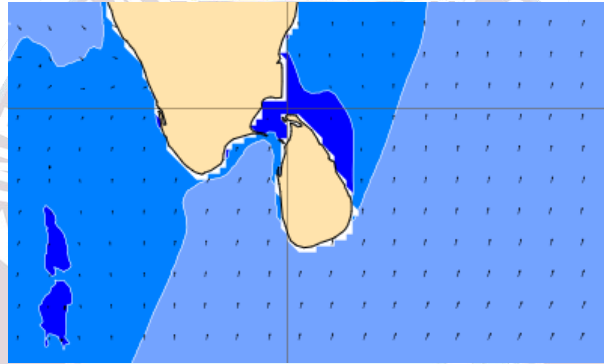
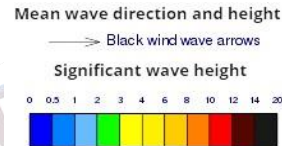
Showers or thundershowers will occur at several places in the sea areas extending from Colombo to Pottuvil via Galle and Hambantota. Showers or thundershowers will occur at a few places over the other sea areas around the island.

Wind speed will be (25-35) kmph.

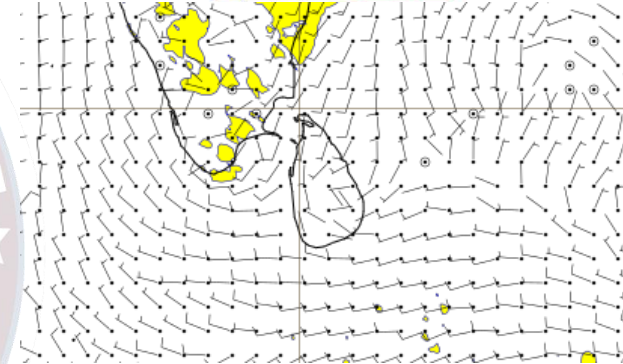
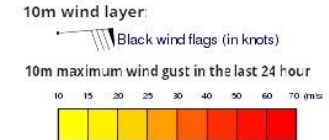
Wind and Rainfall Forecast (Total precipitation for 24 hrs)



Significant wave height (in meters)



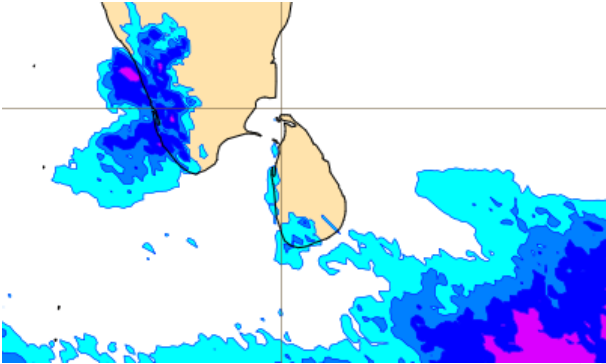
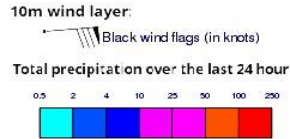
Wind Gust (m/s)



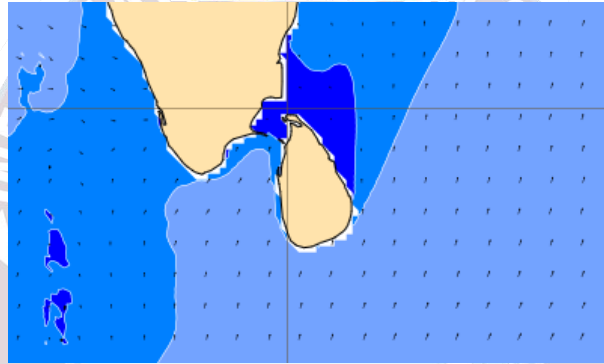
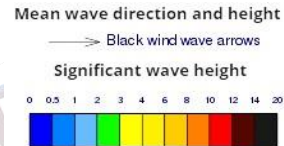
Showers or thundershowers will occur at a few places in the sea areas extending from Galle to Matara. Mainly fair weather will prevail over the other sea areas around the island.

Wind speed will be (25-35) kmph.

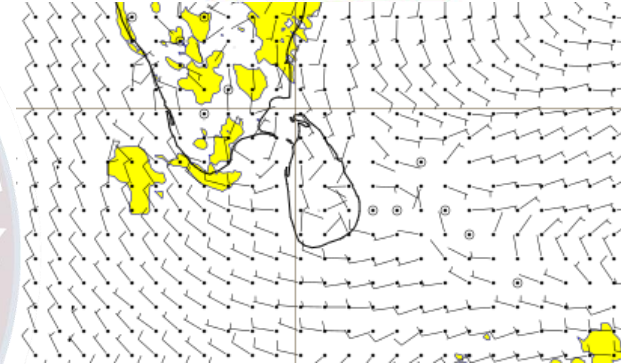
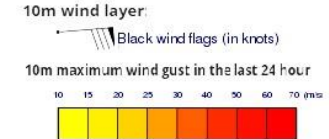
Wind and Rainfall Forecast (Total precipitation for 24 hrs)



Significant wave height (in meters)



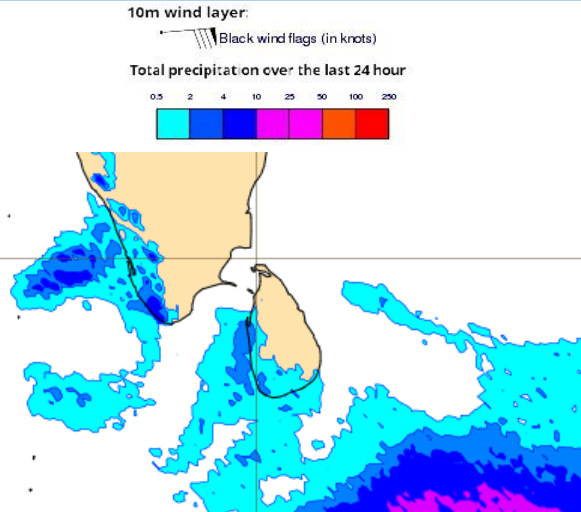
Wind Gust (m/s)



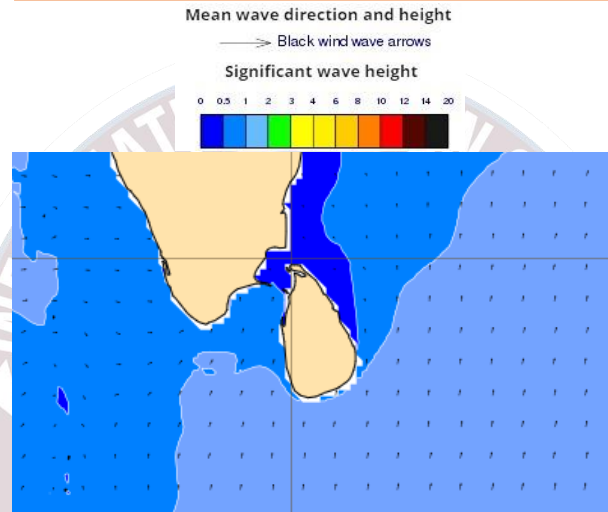
Showers or thundershowers will occur at a few places in the sea areas extending from Galle to Matara. Mainly fair weather will prevail over the other sea areas around the island.

Wind speed will be (25-35) kmph.

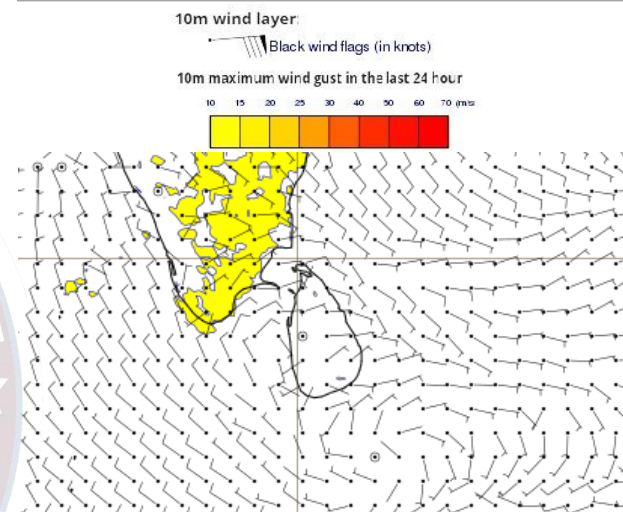
Wind and Rainfall Forecast (Total precipitation for 24 hrs)



Significant wave height (in meters)



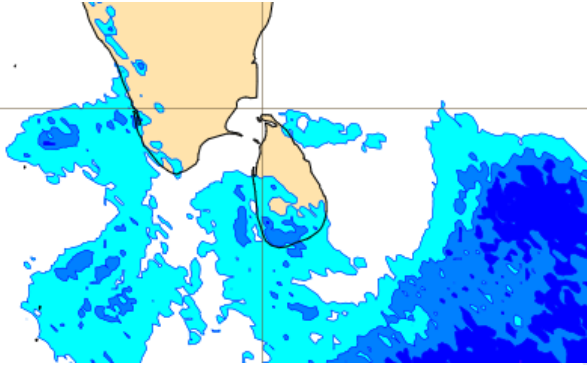
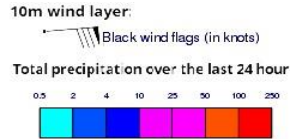
Wind Gust (m/s)



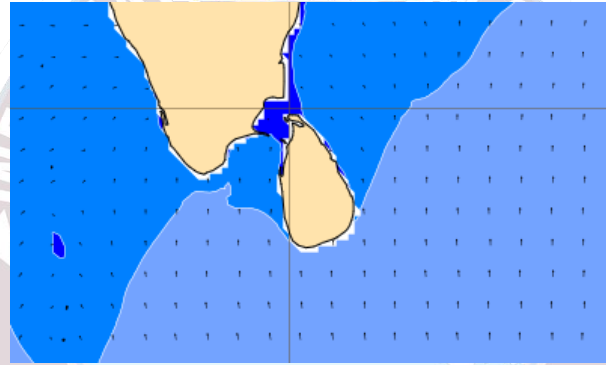
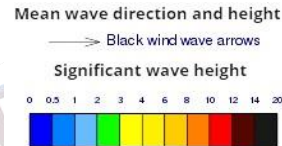
Showers or thundershowers will occur at a few places in the sea areas extending from Puttalam to Hambantota via Colombo and Galle. Mainly fair weather will prevail over the other sea areas around the island.

Wind speed will be (20-30) kmph.

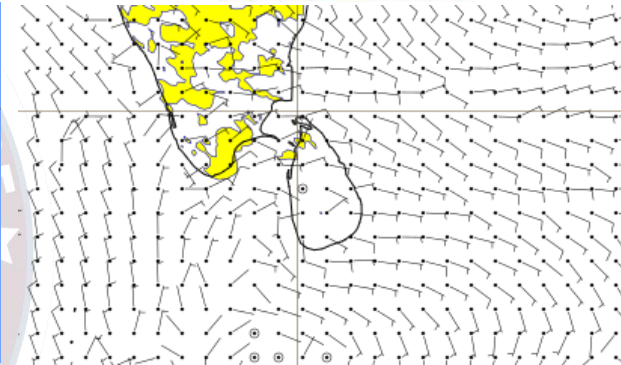
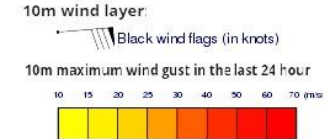
Wind and Rainfall Forecast (Total precipitation for 24 hrs)



Significant wave height (in meters)



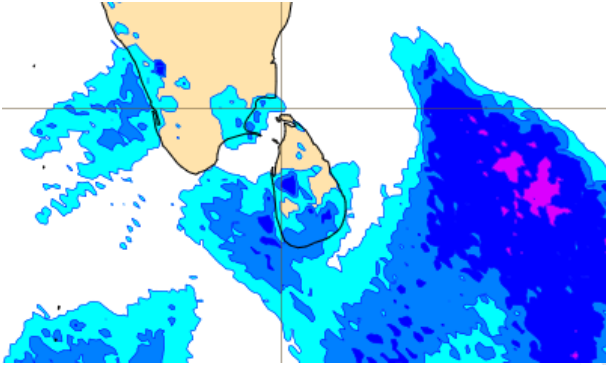
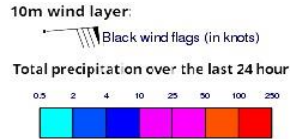
Wind Gust (m/s)



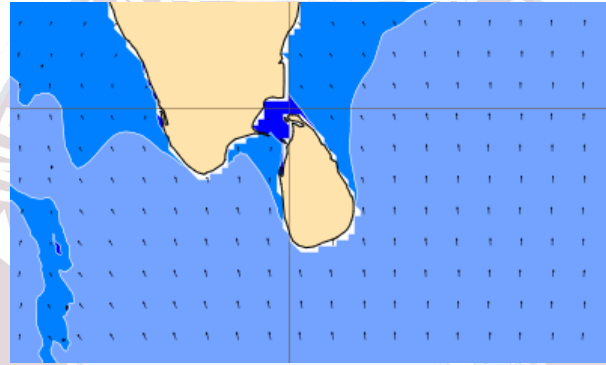
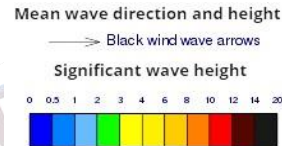
Showers or thundershowers will occur at a few places in the sea areas extending from Puttalam to Hambantota via Colombo and Galle. Mainly fair weather will prevail over the other sea areas around the island.

Wind speed will be (20-30) kmph.

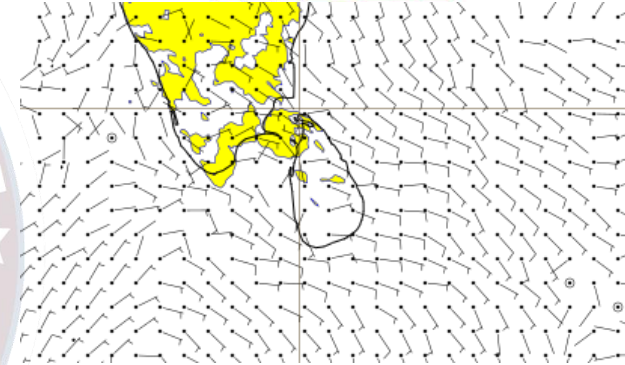
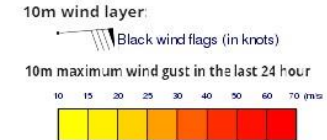
Wind and Rainfall Forecast (Total precipitation for 24 hrs)



Significant wave height (in meters)



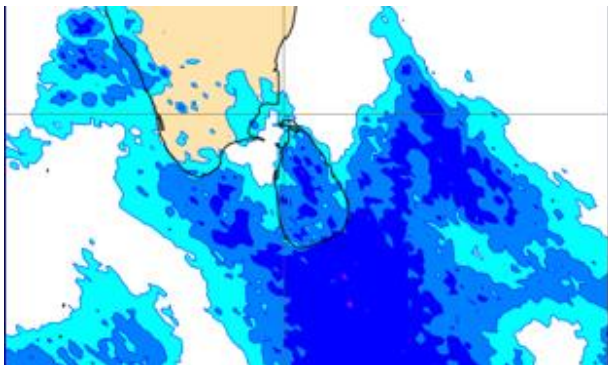
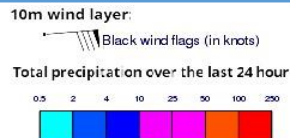
Wind Gust (m/s)



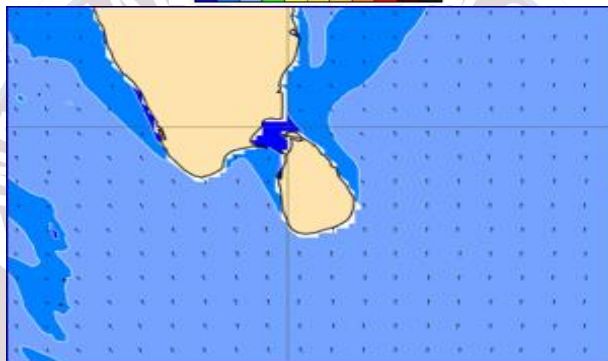
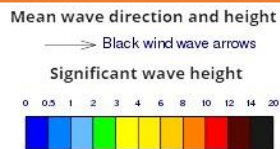
Showers or thundershowers will occur at a few places in the sea areas extending from Puttalam to Hambantota via Colombo and Galle. Mainly fair weather will prevail over the other sea areas around the island.

Wind speed will be (20-30) kmph.

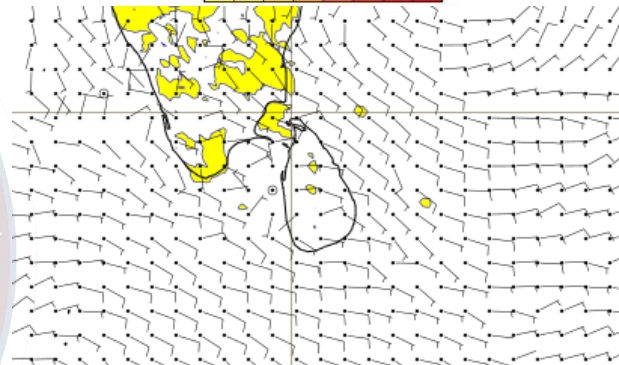
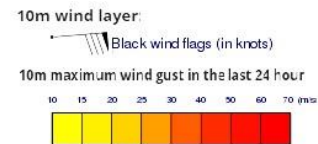
Wind and Rainfall Forecast (Total precipitation for 24 hrs)



Significant wave height (in meters)



Wind Gust (m/s)



Showers or thundershowers will occur at several places in the sea areas extending from Puttalam to Trincomalee via Colombo, Galle and Hambantota. Mainly fair weather will prevail over the other sea areas around the island.

Wind speed will be (20-30) kmph.

The logo is a circular emblem. The outer ring is dark blue with the text 'INFORMATION FUSION CENTRE' in white at the top and 'COLOMBO - SRI LANKA' in white at the bottom. Inside the ring is a map of the Indian subcontinent and surrounding regions, with the Indian Ocean in light blue. A red and white circular seal is visible behind the map.

Thank you!