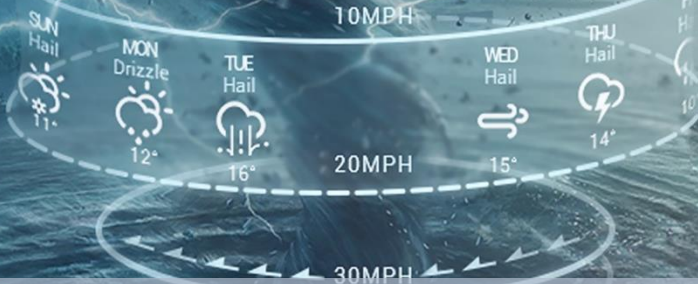



08 DAYS WEATHER FORECAST FOR COASTAL AREAS AROUND SRI LANKA

Storm Direction



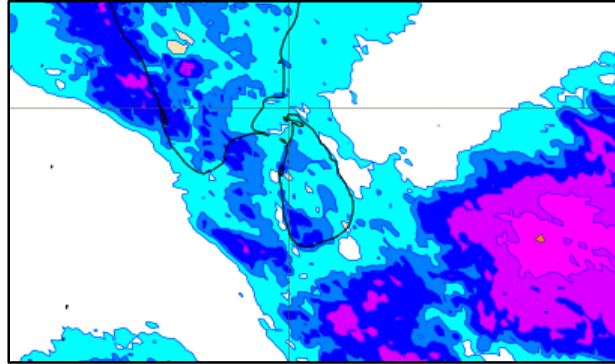
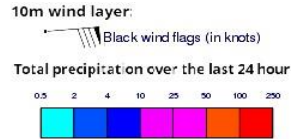
**INFORMATION FUSION CENTRE
COLOMBO**

Know weather before it comes

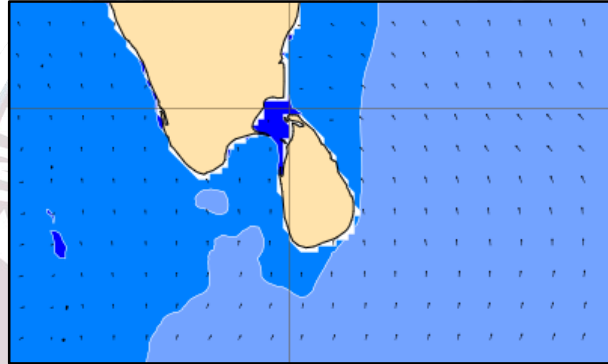
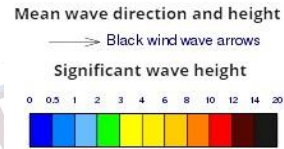


Issued at 0400 p.m. on 04th December 2024
Marine Weather Division, National Meteorological Centre, Department of
Meteorology, Sri Lanka

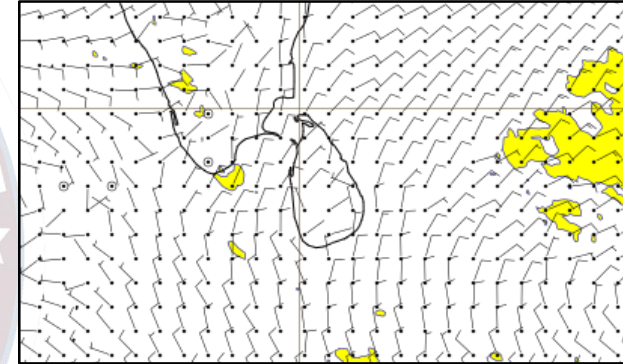
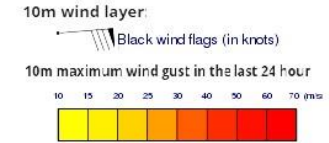
Wind and Rainfall Forecast (Total precipitation for 24 hrs)



Significant wave height (in meters)

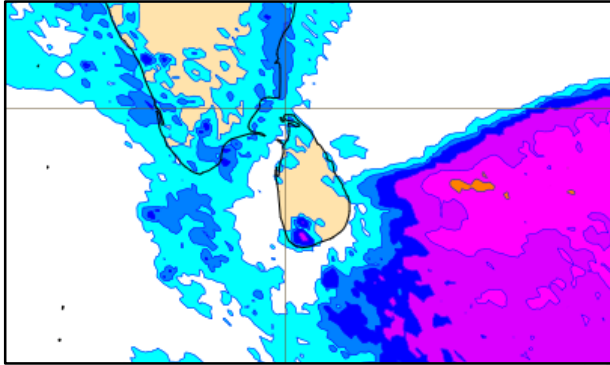
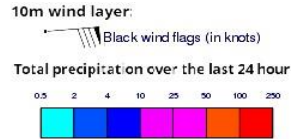


Wind Gust (m/s)

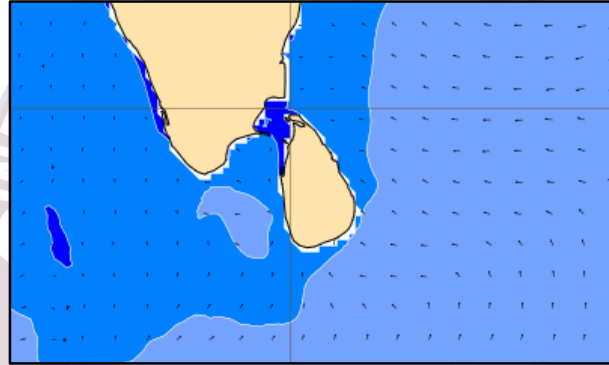
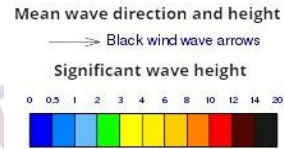


Showers or thundershowers may occur at a few places in the sea areas around the island. Wind speed will be 20-30 kmph in the sea areas around the island.

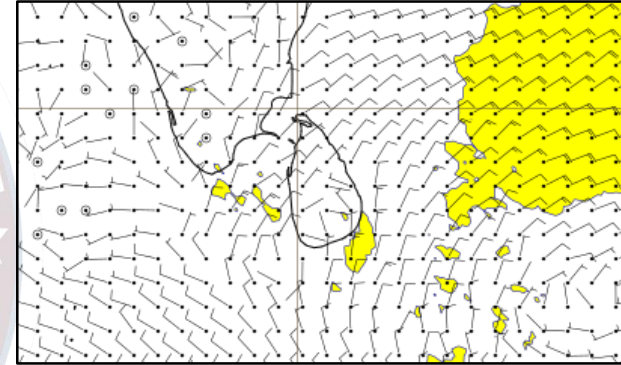
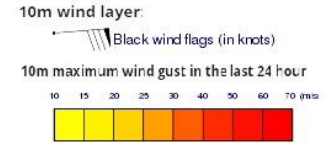
Wind and Rainfall Forecast (Total precipitation for 24 hrs)



Significant wave height (in meters)



Wind Gust (m/s)



Showers or thundershowers may occur at a few places in the sea areas around the island. Wind speed will be 20-30 kmph in the sea areas around the island.

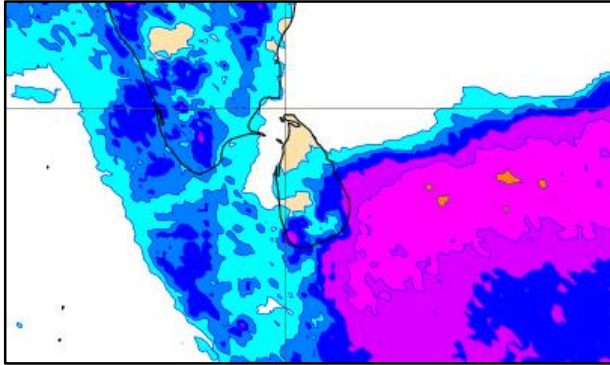
Wind and Rainfall Forecast (Total precipitation for 24 hrs)

10m wind layer:

Black wind flags (in knots)

Total precipitation over the last 24 hour

0.5 2 4 10 25 50 100 200



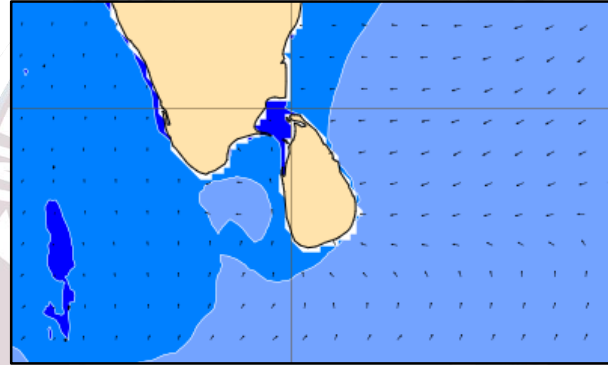
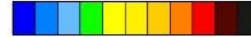
Significant wave height (in meters)

Mean wave direction and height

Black wind wave arrows

Significant wave height

0 0.5 1 2 3 4 6 8 10 12 14 20



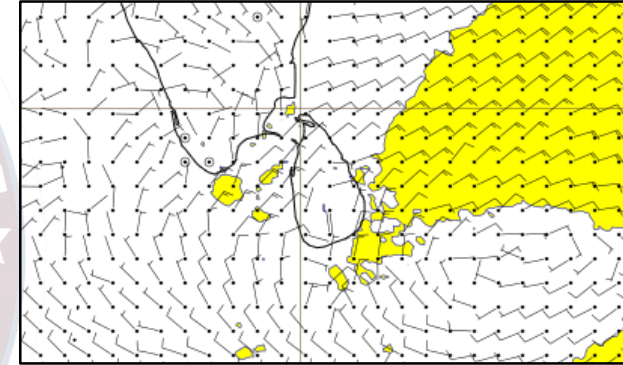
Wind Gust (m/s)

10m wind layer:

Black wind flags (in knots)

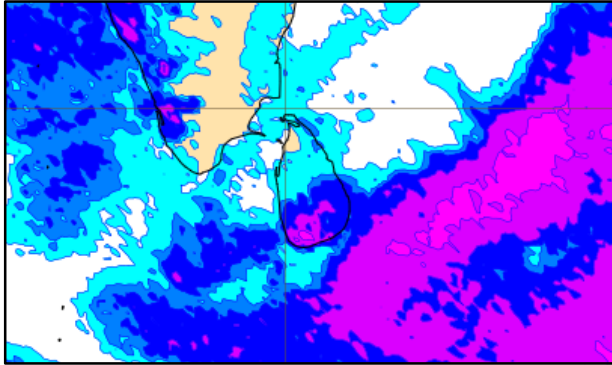
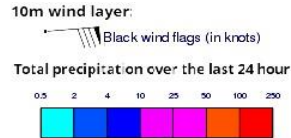
10m maximum wind gust in the last 24 hour

10 15 20 25 30 40 50 60 70 (m/s)

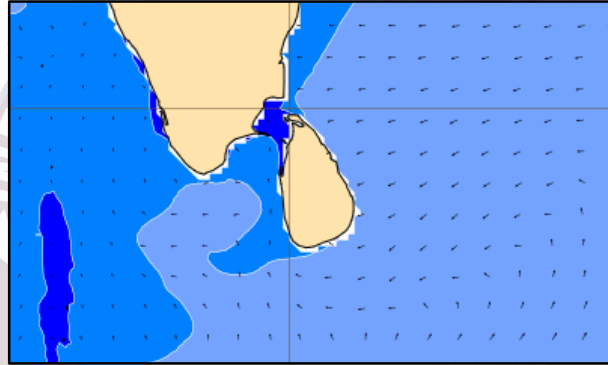
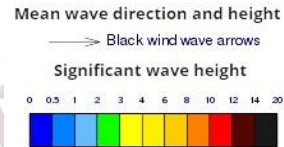


Showers or thundershowers may occur at several places in the sea areas around the island. Wind speed will be 25-35 kmph in the sea areas around the island.

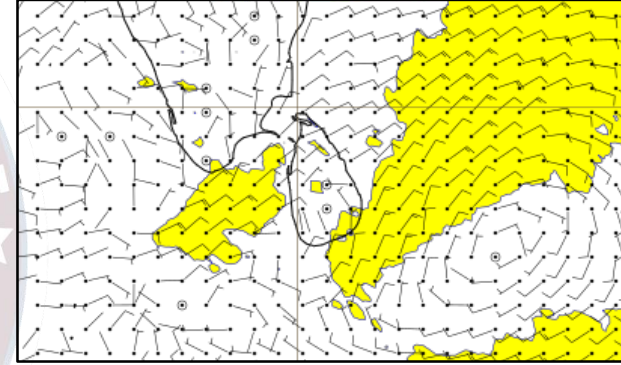
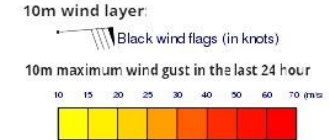
Wind and Rainfall Forecast (Total precipitation for 24 hrs)



Significant wave height (in meters)

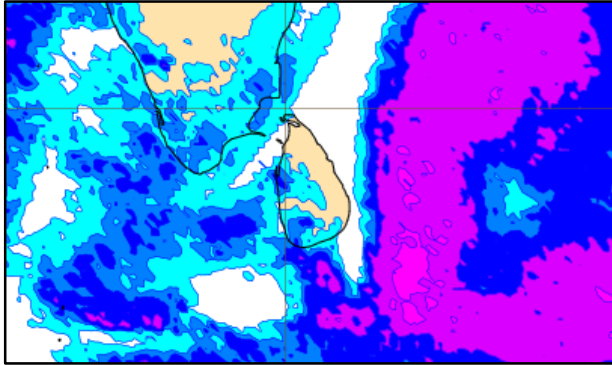
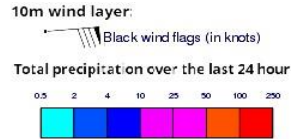


Wind Gust (m/s)

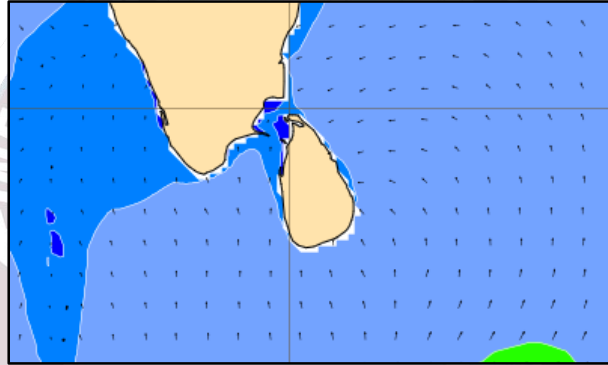
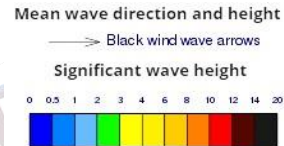


Showers or thundershowers may occur at several places in the sea areas around the island. Wind speed will be 25-35 kmph in the sea areas around the island.

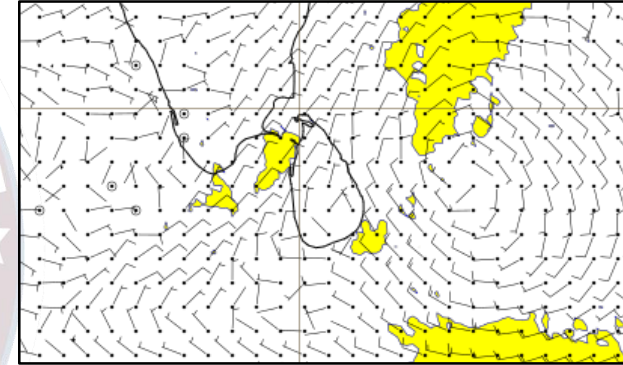
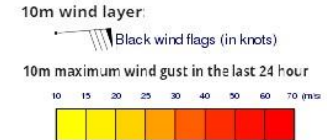
Wind and Rainfall Forecast (Total precipitation for 24 hrs)



Significant wave height (in meters)

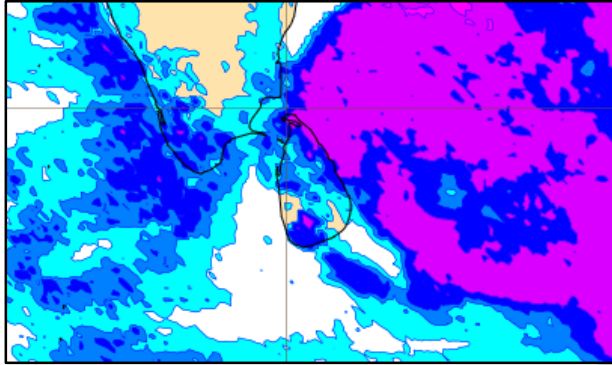
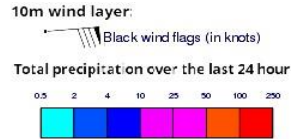


Wind Gust (m/s)

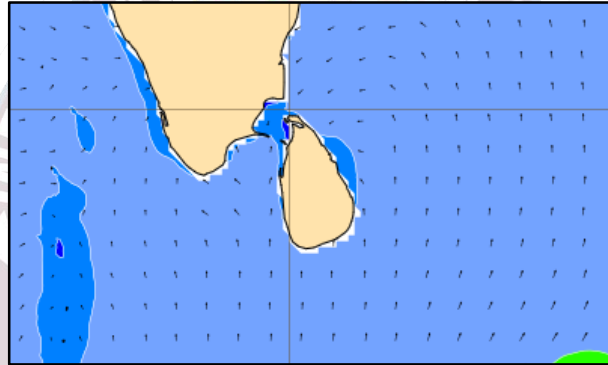
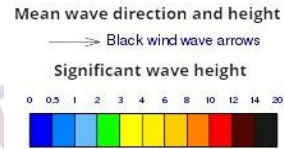


Showers or thundershowers may occur at a few places in the sea areas around the island. Wind speed will be 20-30 kmph in the sea areas around the island.

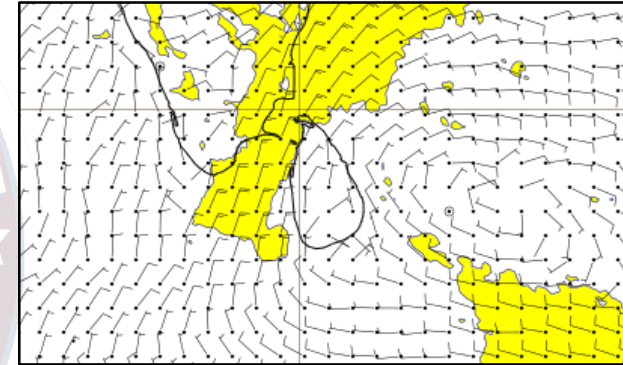
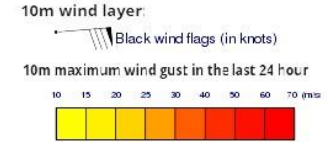
Wind and Rainfall Forecast (Total precipitation for 24 hrs)



Significant wave height (in meters)



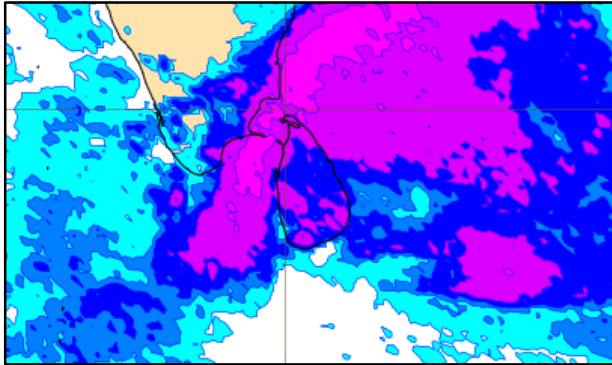
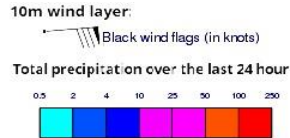
Wind Gust (m/s)



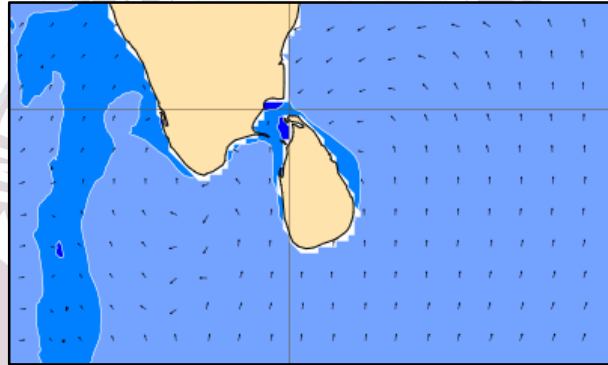
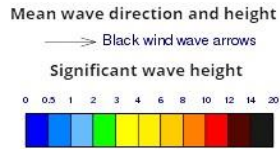
Showers or thundershowers may occur at several places in the sea areas around the island.

Wind speed will be 20-30 kmph in the sea areas around the island. Wind speed can be increase up to 45 kmph at times and the sea condition will be fairly rough at times in the sea areas extending from Puttalam to Kankasanturai via Mannar.

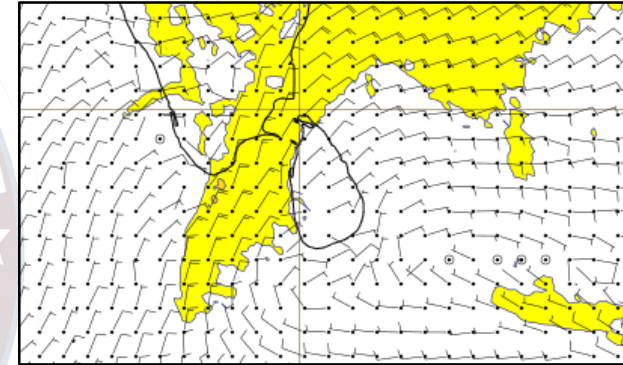
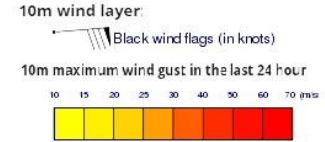
Wind and Rainfall Forecast (Total precipitation for 24 hrs)



Significant wave height (in meters)



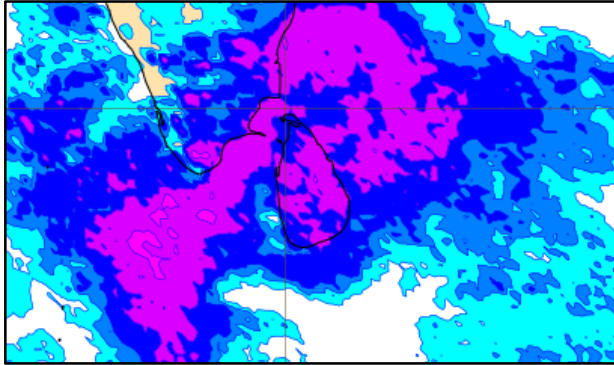
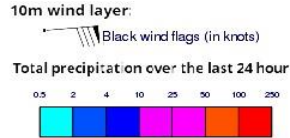
Wind Gust (m/s)



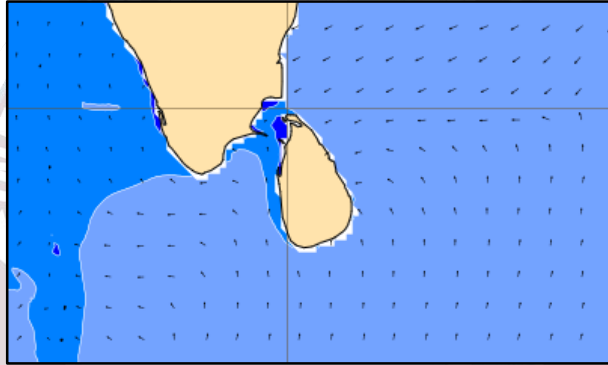
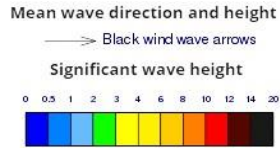
Showers or thundershowers may occur at several places in the sea areas around the island.

Wind speed will be 20-30 kmph in the sea areas around the island. Wind speed can be increase up to 45 kmph at times and the sea condition will be fairly rough at times in the sea areas extending from Puttalam to Kankasanturai via Mannar.

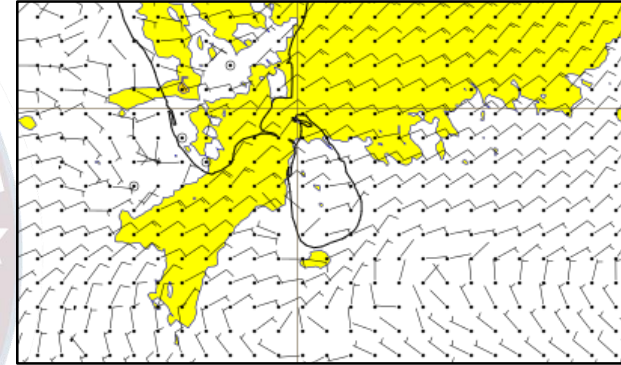
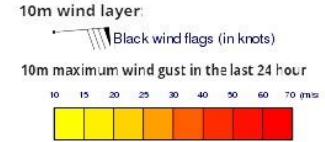
Wind and Rainfall Forecast (Total precipitation for 24 hrs)



Significant wave height (in meters)



Wind Gust (m/s)



Showers or thundershowers may occur at several places in the sea areas around the island.

Wind speed will be 20-30 kmph in the sea areas around the island. Wind speed can be increase up to 45 kmph at times and the sea condition will be fairly rough at times in the sea areas extending from Puttalam to Trincomalee via Kankasanturai.

The logo is a circular emblem. The outer ring is dark blue with the text 'INFORMATION FUSION CENTRE' in white at the top and 'COLOMBO - SRI LANKA' in white at the bottom. The inner circle features a map of South and Central Asia in light blue, with the Indian Ocean to the south. A red and white circular seal is visible behind the map.

Thank you!