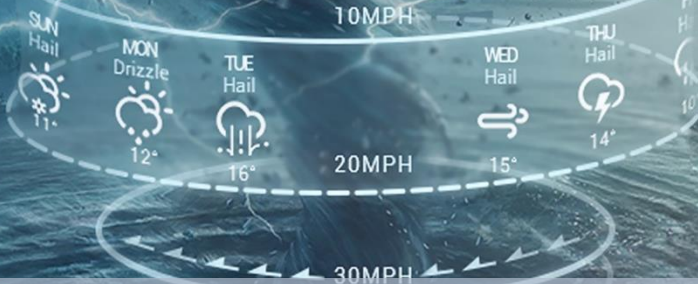


08 DAYS WEATHER FORECAST FOR COASTAL AREAS AROUND SRI LANKA

arm Direction




WARNING



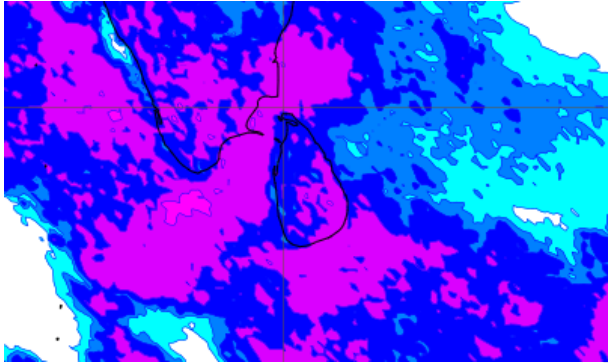
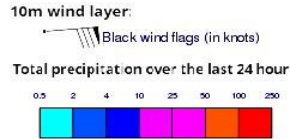
**INFORMATION FUSION CENTRE
COLOMBO**

Know weather before it comes

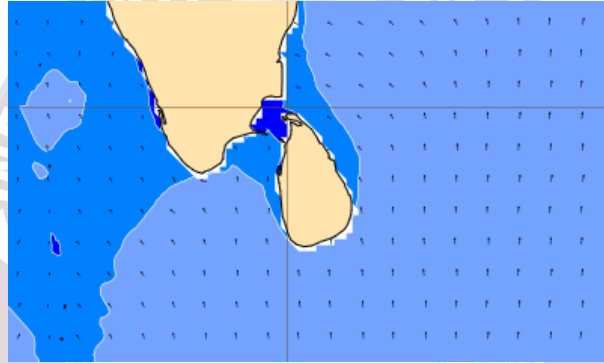
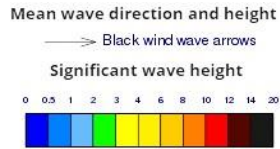


Issued at 0400 p.m. on 14th November 2024
Marine Weather Division, National Meteorological Centre, Department of
Meteorology, Sri Lanka

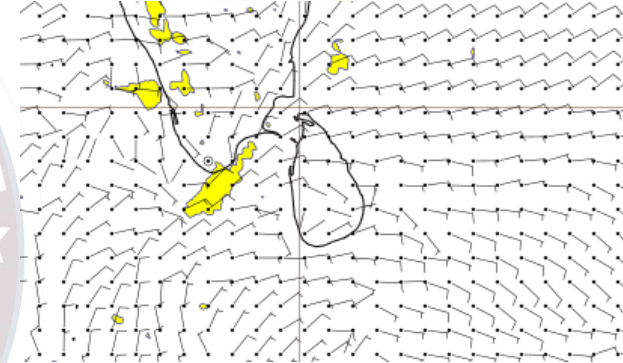
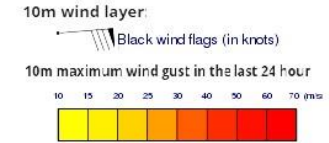
Wind and Rainfall Forecast (Total precipitation for 24 hrs)



Significant wave height (in meters)

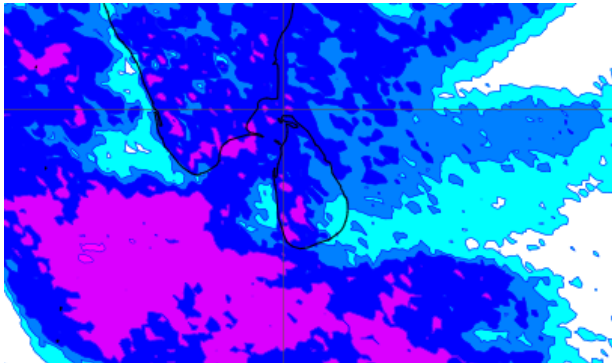
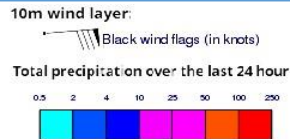


Wind Gust (m/s)

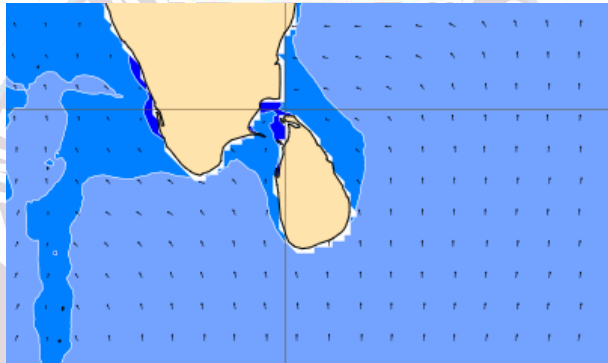
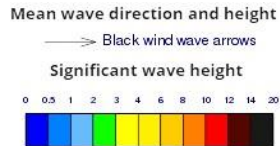


Showers or thundershowers may occur at several places in the sea areas around the island. Wind speed will be 25-35 kmph in the sea areas around the island.

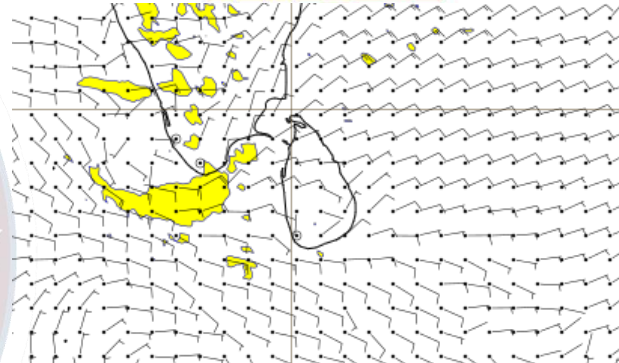
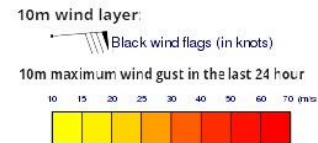
Wind and Rainfall Forecast (Total precipitation for 24 hrs)



Significant wave height (in meters)

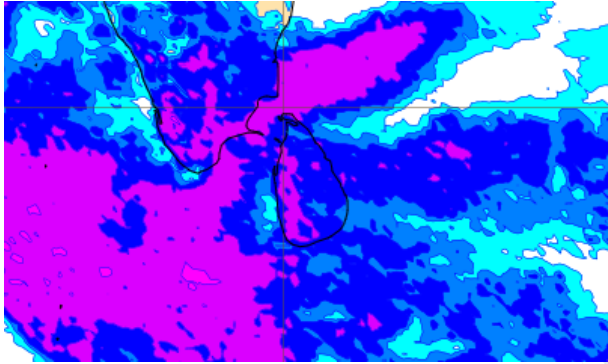
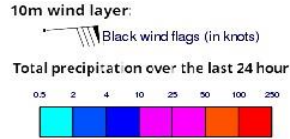


Wind Gust (m/s)

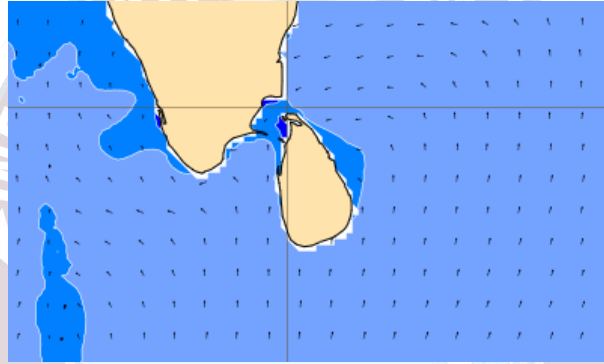
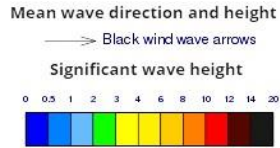


Showers or thundershowers may occur at several places in the sea areas around the island. Wind speed will be 25-35 kmph in the sea areas around the island.

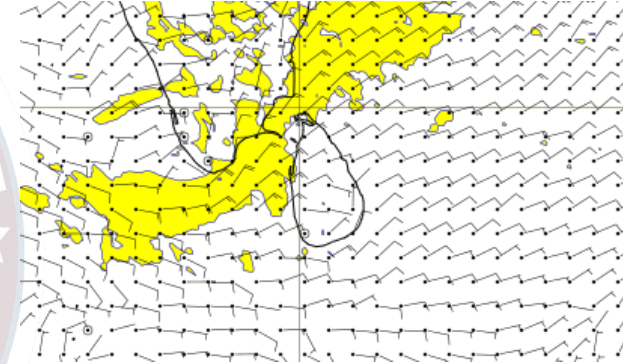
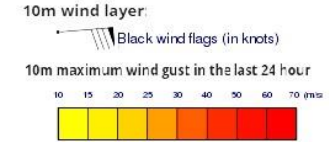
Wind and Rainfall Forecast (Total precipitation for 24 hrs)



Significant wave height (in meters)



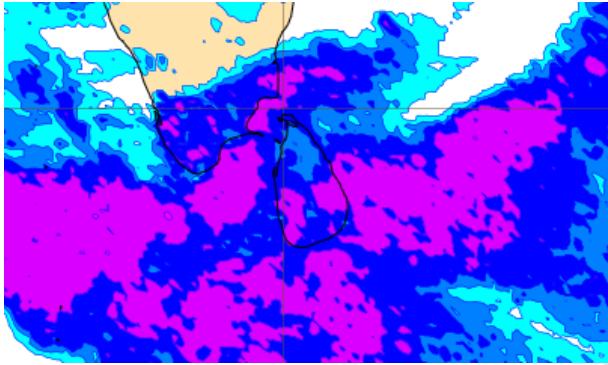
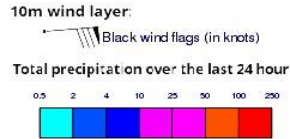
Wind Gust (m/s)



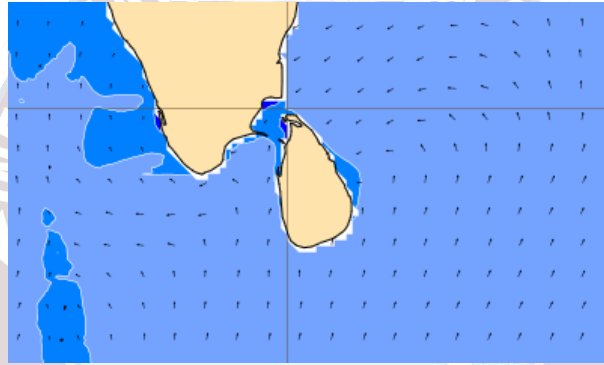
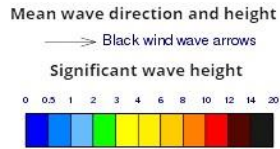
Showers or thundershowers may occur at several places in the sea areas around the island.

Wind speed will be 20-30 kmph in the sea areas around the island. Wind speed can be increase up to 45 kmph at times and the sea condition will be fairly rough at times in the in the sea areas extending from Colombo to Kankasanthurai via Trincomalee.

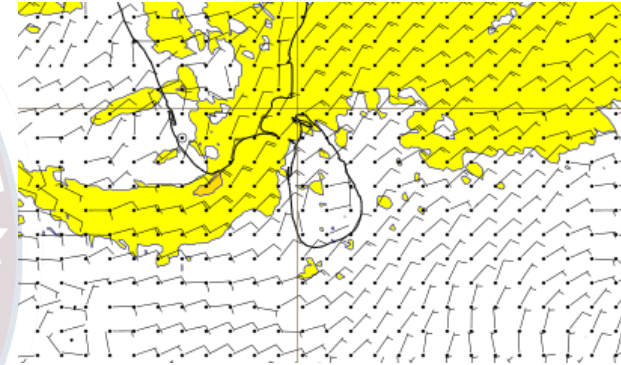
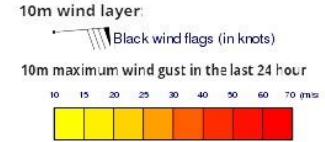
Wind and Rainfall Forecast (Total precipitation for 24 hrs)



Significant wave height (in meters)



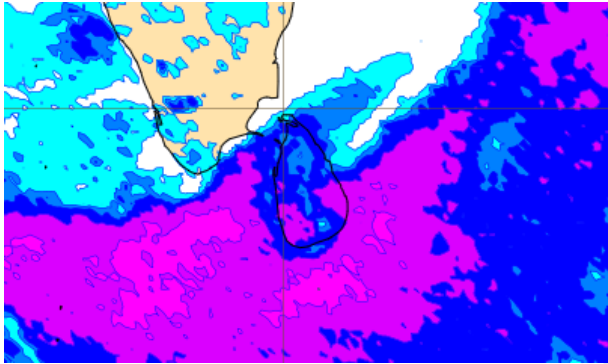
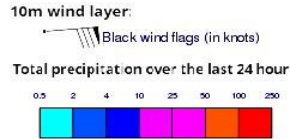
Wind Gust (m/s)



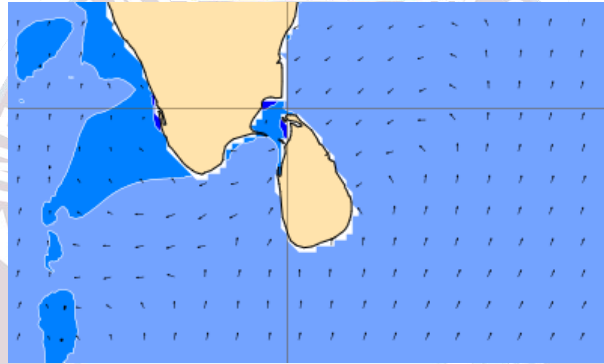
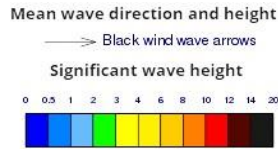
Showers or thundershowers may occur at several places in the sea areas around the island.

Wind speed will be 20-30 kmph in the sea areas around the island. Wind speed can be increase up to 45 kmph at times and the sea condition will be fairly rough at times in the in the sea areas extending from Colombo to Trincomalee via Puttalam and Kankasanthurai.

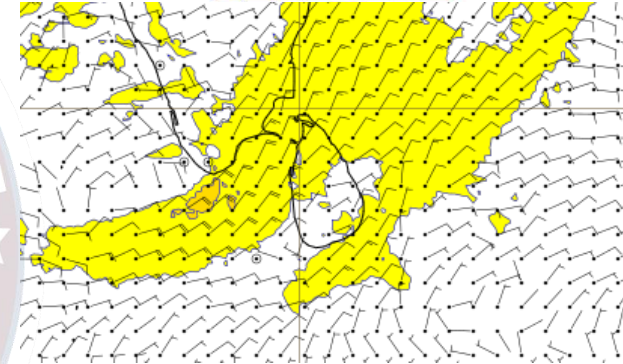
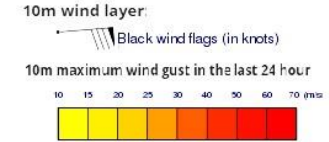
Wind and Rainfall Forecast (Total precipitation for 24 hrs)



Significant wave height (in meters)



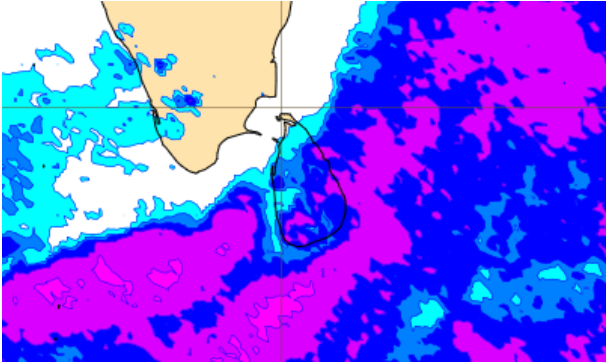
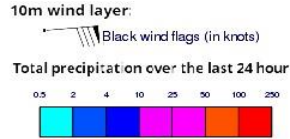
Wind Gust (m/s)



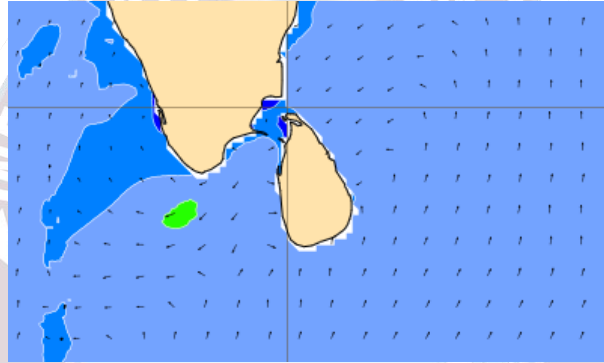
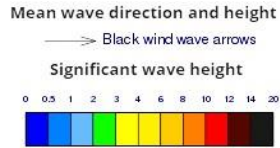
Showers or thundershowers may occur at several places in the sea areas around the island.

Wind speed will be 20-30 kmph in the sea areas around the island. Wind speed can be increase up to 45 kmph at times and the sea condition will be fairly rough at times in the in the sea areas extending from Colombo to Trincomalee via Puttalam and Kankasanthurai and from Hambantota to Pottuvil.

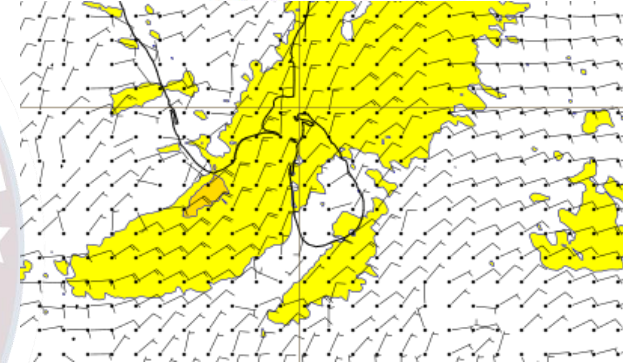
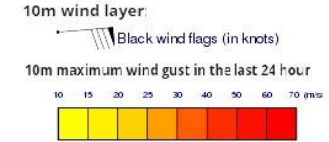
Wind and Rainfall Forecast (Total precipitation for 24 hrs)



Significant wave height (in meters)



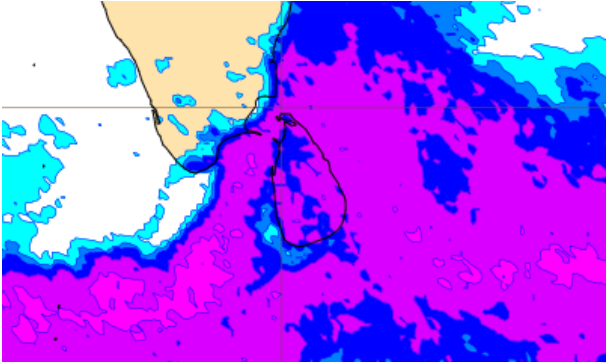
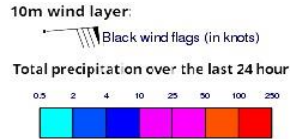
Wind Gust (m/s)



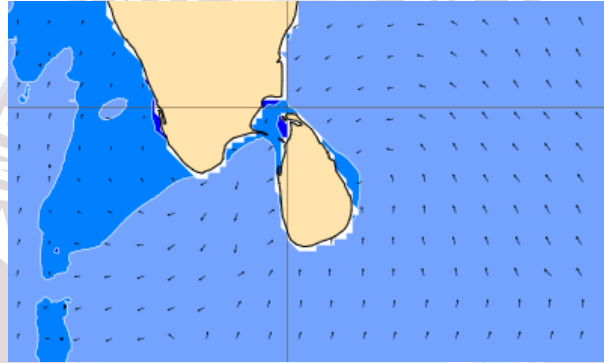
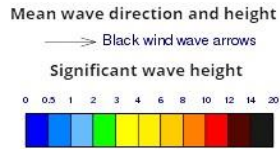
Showers or thundershowers may occur at several places in the sea areas around the island.

Wind speed will be 25-35 kmph in the sea areas around the island. Wind speed can be increase up to 45 kmph at times and the sea condition will be fairly rough at times in the in the sea areas extending from Colombo to Trincomalee via Puttalam and Kankasanthurai and from Hambantota to Pottuvil.

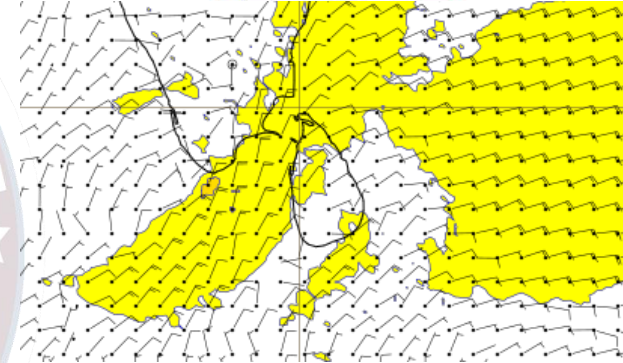
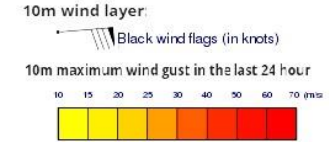
Wind and Rainfall Forecast (Total precipitation for 24 hrs)



Significant wave height (in meters)



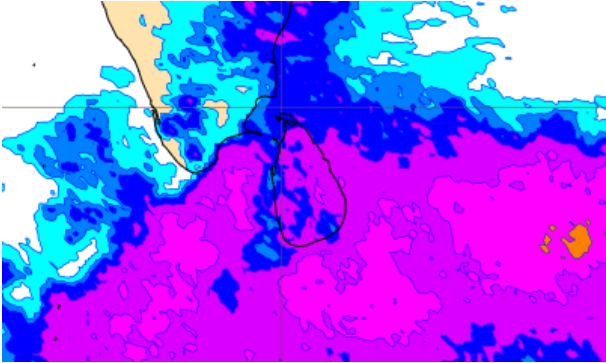
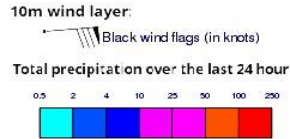
Wind Gust (m/s)



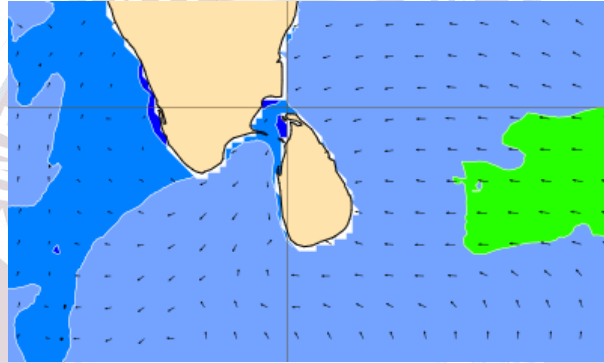
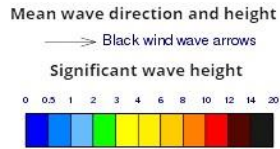
Showers or thundershowers may occur at several places in the sea areas around the island.

Wind speed will be 20-30 kmph in the sea areas around the island. Wind speed can be increase up to 45 kmph at times and the sea condition will be fairly rough at times in the in the sea areas extending from Colombo to Trincomalee via Puttalam and Kankasanthurai and from Hambantota to Pottuvil.

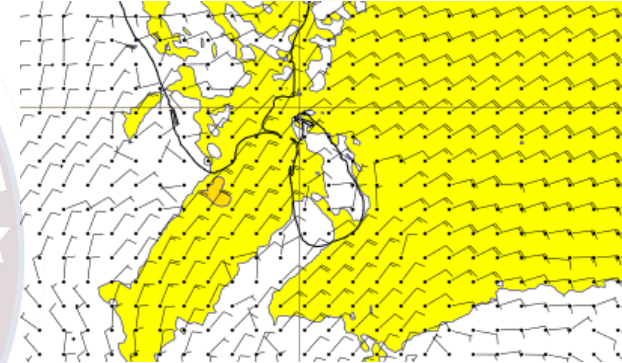
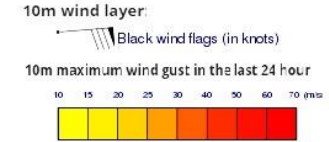
Wind and Rainfall Forecast (Total precipitation for 24 hrs)



Significant wave height (in meters)



Wind Gust (m/s)



Showers or thundershowers may occur at several places in the sea areas around the island.

Wind speed will be 25-35 kmph in the sea areas around the island. Wind speed can be increase up to 45 kmph at times and the sea condition will be fairly rough at times in the in the sea areas extending from Colombo to Trincomalee via Puttalam and Kankasanthurai.

The logo is a circular emblem. The outer ring is dark blue with the text 'INFORMATION FUSION CENTRE' in white at the top and 'COLOMBO - SRI LANKA' in white at the bottom. The inner circle features a map of South and Central Asia in light blue, with the Indian Ocean to the south. A red and white circular seal is partially visible behind the map.

Thank you!