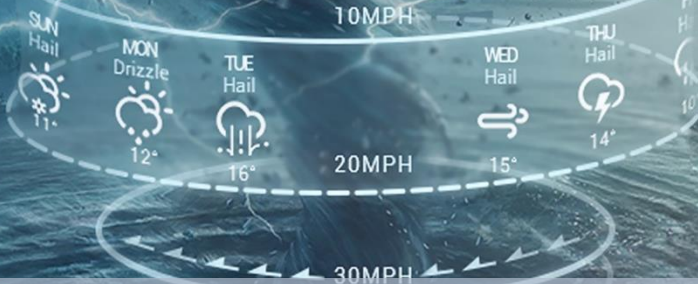



# 08 DAYS WEATHER FORECAST FOR COASTAL AREAS AROUND SRI LANKA

Storm Direction



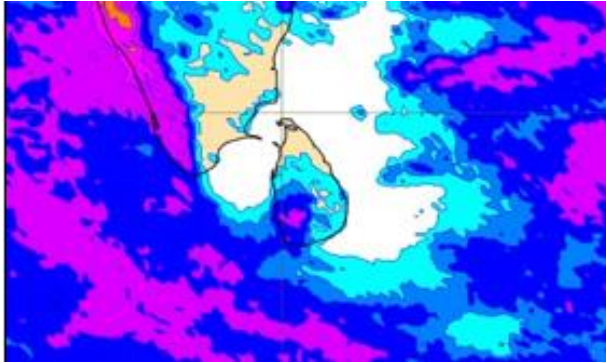
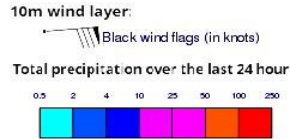
**INFORMATION FUSION CENTRE  
COLOMBO**

Know weather before it comes

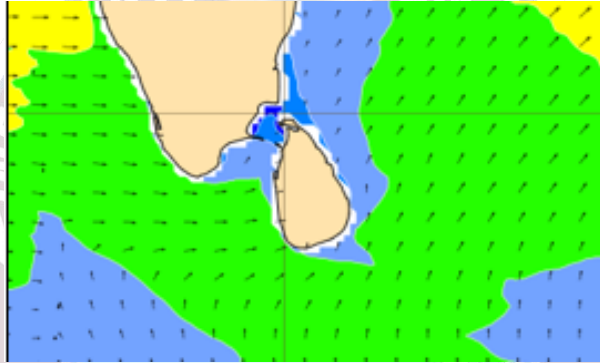
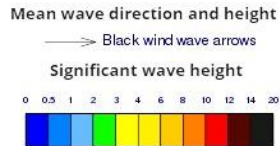


Issued at 04.00 a.m. on 25<sup>th</sup> July 2024  
Marine Weather Division, National Meteorological Centre, Department of  
Meteorology, Sri Lanka

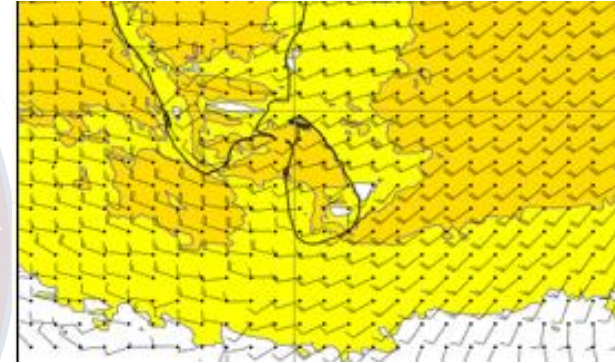
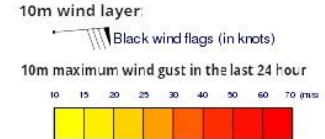
## Wind and Rainfall Forecast (Total precipitation for 24 hrs)



## Significant wave height (in meters)



## Wind Gust (m/s)

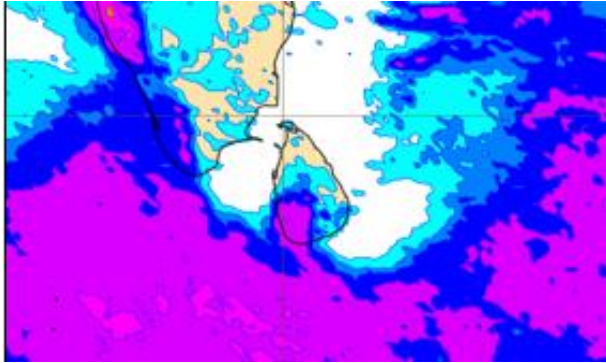
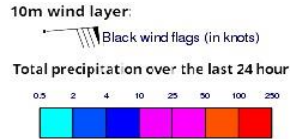


Showers or thundershowers will occur at several places in the sea areas off the coast extending from Puttalam to Matara via Colombo and Galle. Mainly fair weather will prevail in the other sea areas around the island.

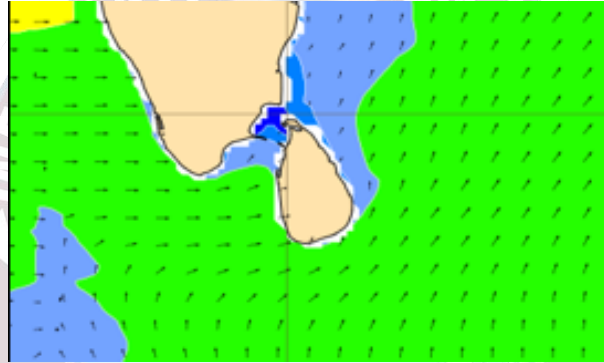
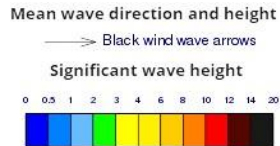
Wind speed will be 30-40 kmph in the sea areas extending from Kankasanturai to Puttalam via Mannar and from Hambantota to Pottuvil. Wind speed can increase up to 60 kmph at times and the sea condition will be rough at times in these sea areas. Wind speed will be 20-30 kmph in the other sea areas around the island. Wind speed can increase up to 45 kmph at times and the sea condition will be fairly rough at times in the other sea areas extending from Trincomalee to Kankasanturai via Mullaituvu.



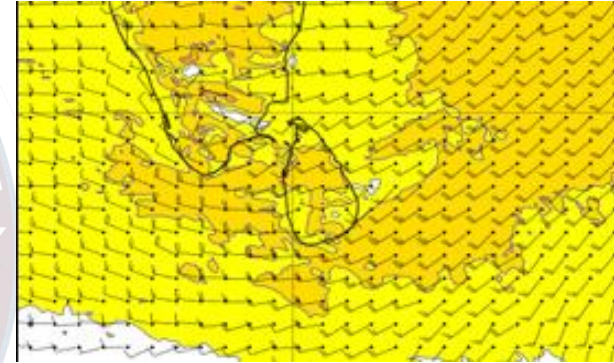
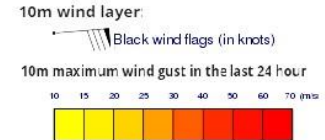
## Wind and Rainfall Forecast (Total precipitation for 24 hrs)



## Significant wave height (in meters)



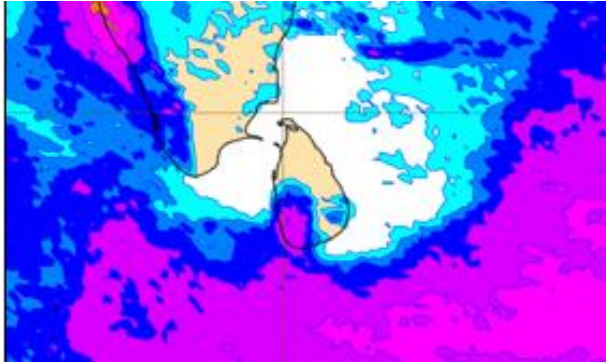
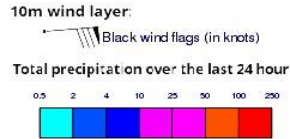
## Wind Gust (m/s)



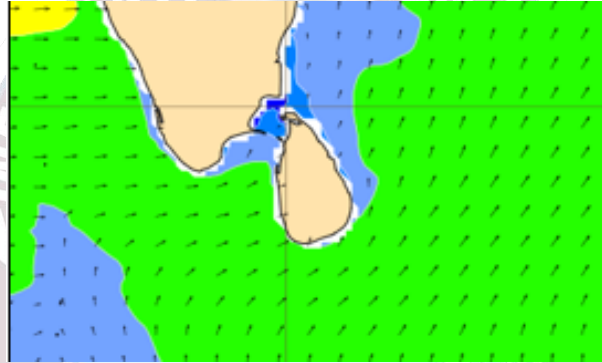
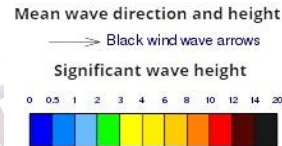
Showers or thundershowers will occur at several places in the sea areas off the coast extending from Puttalam to Matara via Colombo and Galle. Mainly fair weather will prevail in the other sea areas around the island.

Wind speed will be 30-40 kmph in the sea areas extending from Kankasanturai to Puttalam via Mannar and from Hambantota to Pottuvil. Wind speed can increase up to 65 kmph at times and the sea condition will be very rough at times in these sea areas. Wind speed will be 20-30 kmph in the other sea areas around the island. Wind speed can increase up to 50 kmph at times and the sea condition will be rough at times in the other sea areas extending from Trincomalee to Kankasanturai via Mullaituvu and from Puttalam to Hambantota via Colombo.

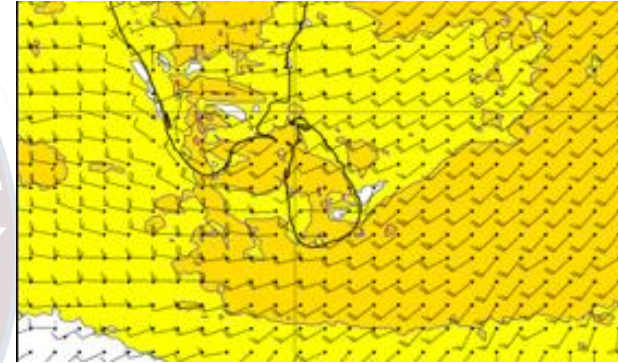
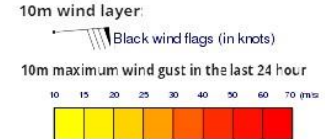
## Wind and Rainfall Forecast (Total precipitation for 24 hrs)



## Significant wave height (in meters)



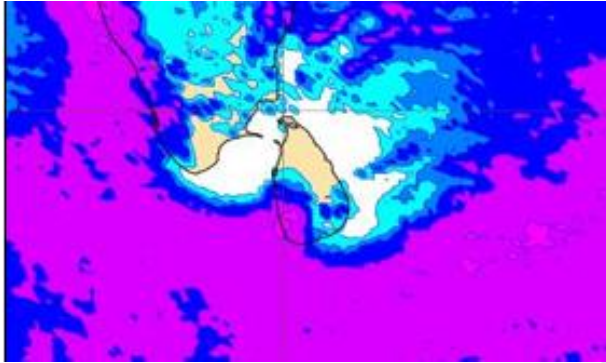
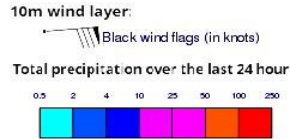
## Wind Gust (m/s)



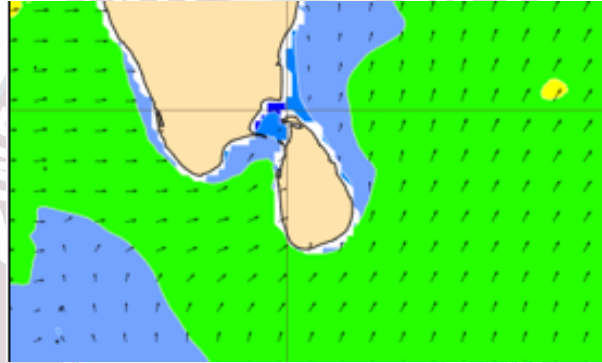
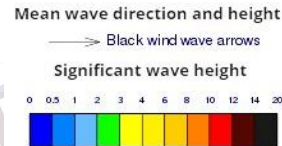
Showers or thundershowers will occur at several places in the sea areas off the coast extending from Puttalam to Matara via Colombo and Galle. Mainly fair weather will prevail in the other sea areas around the island.

Wind speed will be 30-40 kmph in the sea areas extending from Kankasanturai to Pottuvil via Puttalam and Colombo. Wind speed can increase up to 60 kmph at times and the sea condition will be very rough at times in these sea areas. Wind speed will be 20-30 kmph in the other sea areas around the island.

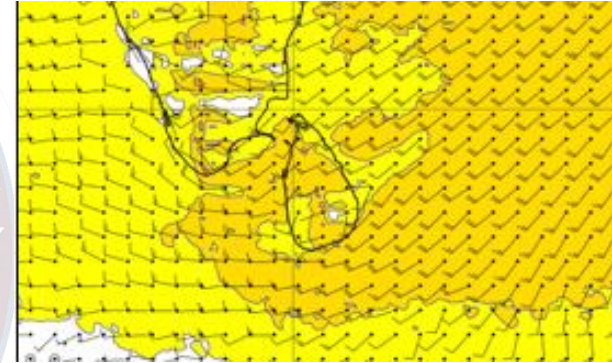
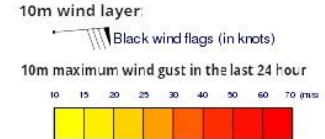
## Wind and Rainfall Forecast (Total precipitation for 24 hrs)



## Significant wave height (in meters)



## Wind Gust (m/s)

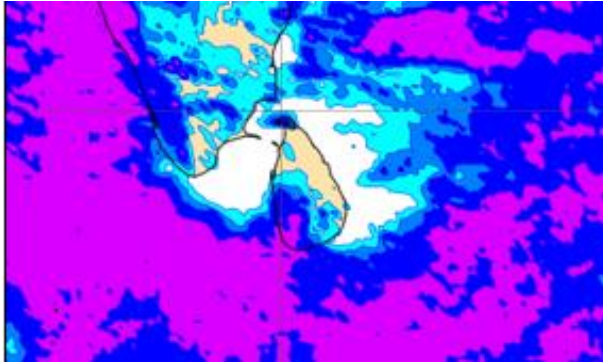
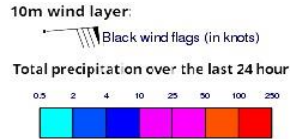


Showers or thundershowers will occur at several places in the sea areas off the coast extending from Colombo to Matara via Galle. Mainly fair weather will prevail in the other sea areas around the island.

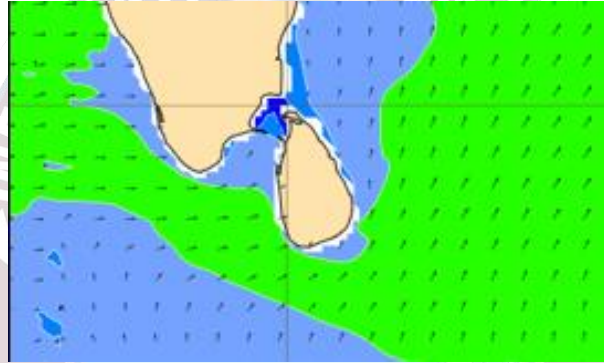
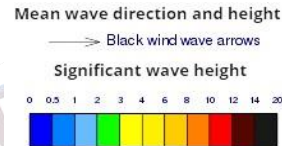
Wind speed will be 30-40 kmph in the sea areas extending from Kankasanturai to Puttalam via Mannar and from Hambantota to Pottuvil. Wind speed can increase up to 65 kmph at times and the sea condition will be very rough at times in these sea areas. Wind speed will be 20-30 kmph in the other sea areas around the island. Wind speed can increase up to 50 kmph at times and the sea condition will be rough at times in the other sea areas extending from Trincomalee to Kankasanturai via Mullaitivu and from Puttalam to Hambantota via Colombo.



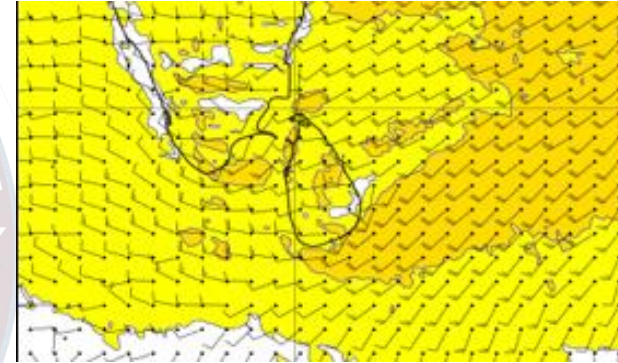
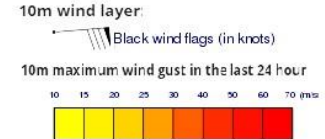
## Wind and Rainfall Forecast (Total precipitation for 24 hrs)



## Significant wave height (in meters)



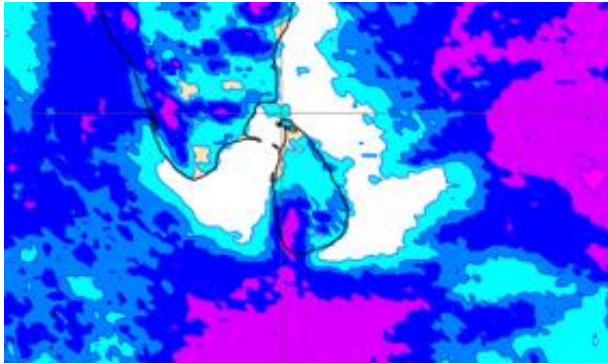
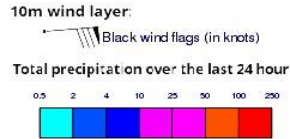
## Wind Gust (m/s)



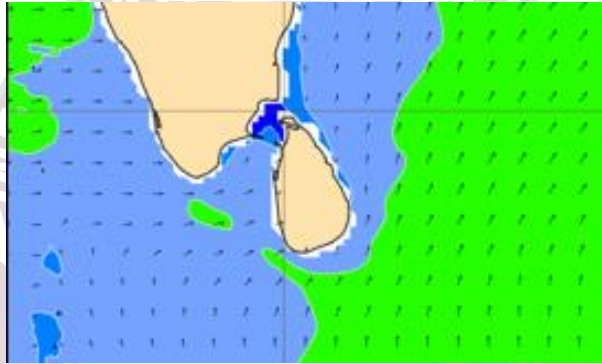
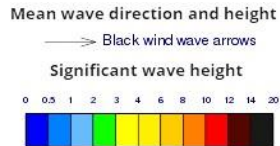
Showers or thundershowers will occur at several places in the sea areas off the coast extending from Puttalam to Colombo. Mainly fair weather will prevail in the other sea areas around the island.

Wind speed will be 30-40 kmph in the sea areas extending from Kankasanturai to Puttalam via Mannar and from Hambantota to Pottuvil. Wind speed can increase up to 65 kmph at times and the sea condition will be very rough at times in these sea areas. Wind speed will be 20-30 kmph in the other sea areas around the island. Wind speed can increase up to 50 kmph at times and the sea condition will be rough at times in the other sea areas extending from Trincomalee to Kankasanturai via Mullaituvu and from Puttalam to Hambantota via Colombo.

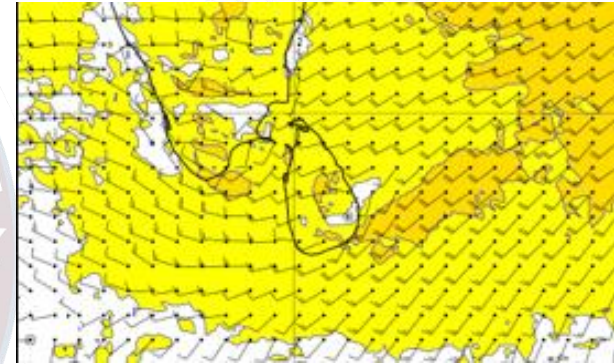
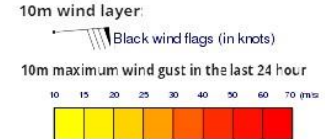
## Wind and Rainfall Forecast (Total precipitation for 24 hrs)



## Significant wave height (in meters)



## Wind Gust (m/s)

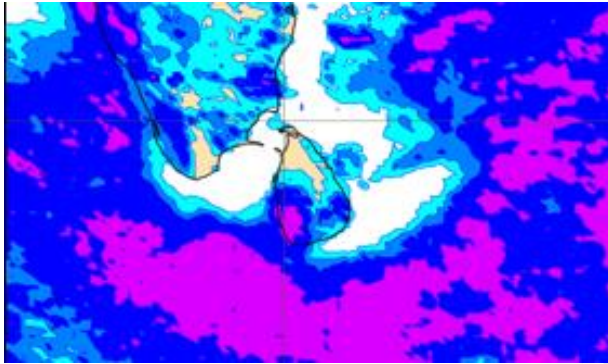
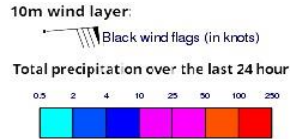


Showers or thundershowers will occur at several places in the sea areas off the coast extending from Puttalam to Matara via Colombo and Galle. Mainly fair weather will prevail in the other sea areas around the island.

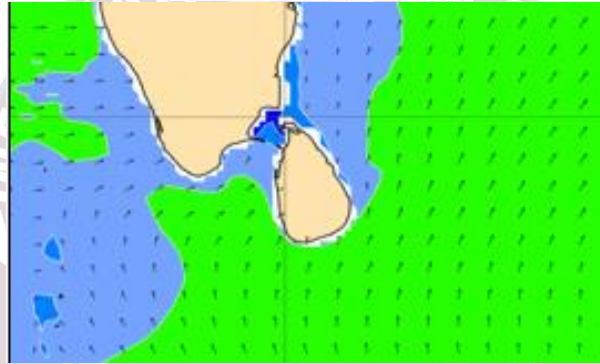
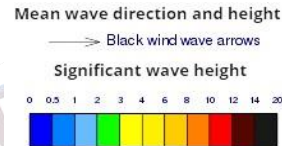
Wind speed will be 30-40 kmph in the sea areas extending from Kankasanturai to Puttalam via Mannar and from Hambantota to Pottuvil. Wind speed can increase up to 60 kmph at times and the sea condition will be rough at times in these sea areas. Wind speed will be 20-30 kmph in the other sea areas around the island. Wind speed can increase up to 45 kmph at times and the sea condition will be fairly rough at times in the other sea areas extending from Trincomalee to Kankasanturai via Mullaitivu and from Puttalam to Hambantota via Colombo.



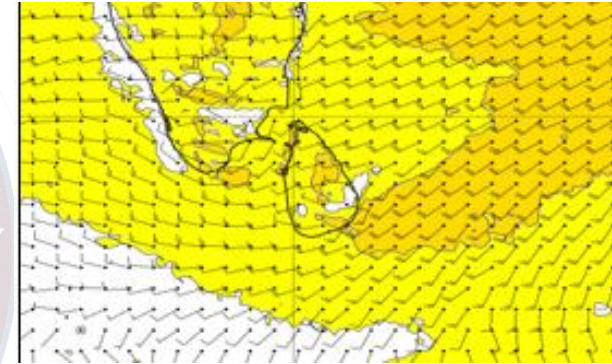
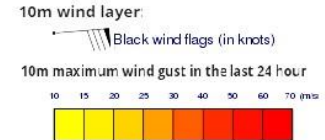
## Wind and Rainfall Forecast (Total precipitation for 24 hrs)



## Significant wave height (in meters)



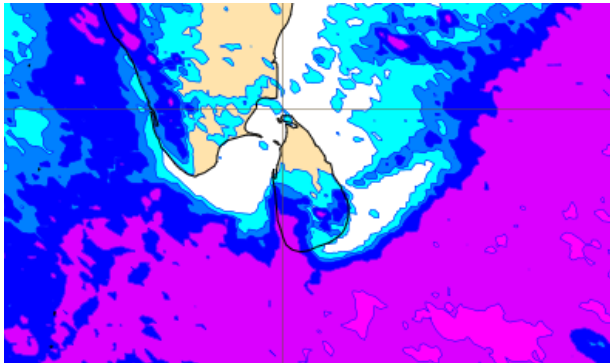
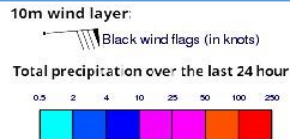
## Wind Gust (m/s)



Showers or thundershowers will occur at several places in the sea areas off the coast extending from Puttalam to Matara via Colombo and Galle. Mainly fair weather will prevail in the other sea areas around the island.

Wind speed will be 30-40 kmph in the sea areas extending from Kankasanturai to Puttalam via Mannar and from Hambantota to Pottuvil. Wind speed can increase up to 60 kmph at times and the sea condition will be rough at times in these sea areas. Wind speed will be 20-30 kmph in the other sea areas around the island. Wind speed can increase up to 45 kmph at times and the sea condition will be fairly rough at times in the other sea areas extending from Trincomalee to Kankasanturai via Mullaitivu and from Puttalam to Hambantota via Colombo.

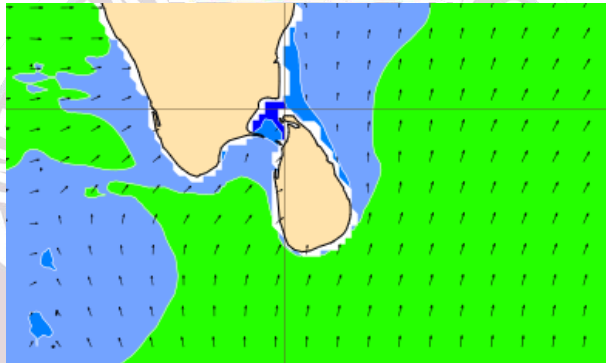
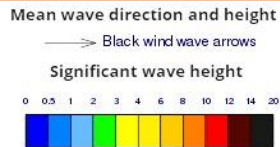
## Wind and Rainfall Forecast (Total precipitation for 24 hrs)



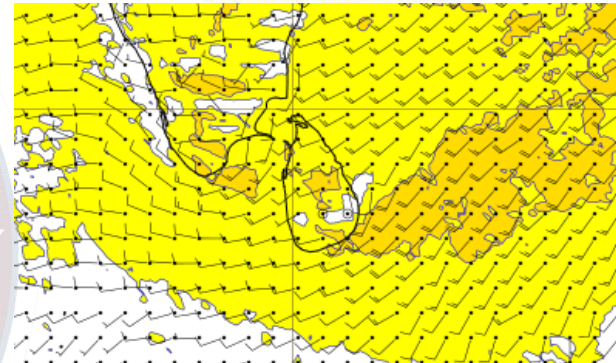
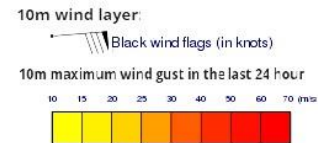
Showers or thundershowers will occur at several places in the sea areas off the coast extending from Puttalam to Matara via Colombo and Galle. Mainly fair weather will prevail in the other sea areas around the island.

Wind speed will be 30-40 kmph in the sea areas extending from Kankasanturai to Puttalam via Manner and from Hambantota to Pottuvil. Wind speed can increase up to 60 kmph at times and the sea condition will be rough at times in these sea areas. Wind speed will be 20-30 kmph in the other sea areas around the island. Wind speed can increase up to 45 kmph at times and the sea condition will be fairly rough at times in the other sea areas extending from Trincomalee to Kankasanturai via Mullaituvu and from Puttalam to Hambantota via Colombo.

## Significant wave height (in meters)



## Wind Gust (m/s)



The logo is a circular emblem. The outer ring is dark blue with the text 'INFORMATION FUSION CENTRE' in white at the top and 'COLOMBO - SRI LANKA' in white at the bottom. The inner circle features a map of South and Central Asia in light blue, with a red sun-like symbol in the center.

Thank you!