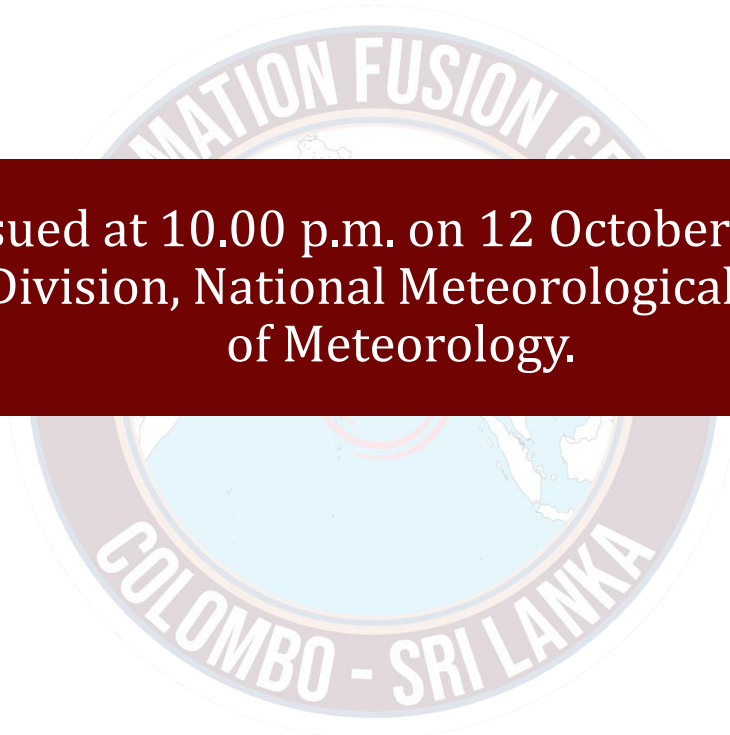




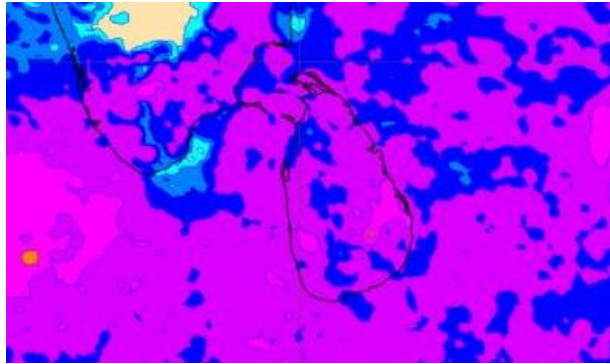
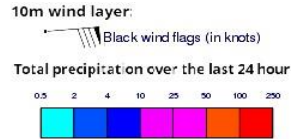
INFORMATION FUSION CENTRE COLOMBO

07 DAYS FORECAST FOR COASTAL AREAS AROUND SRI LANKA

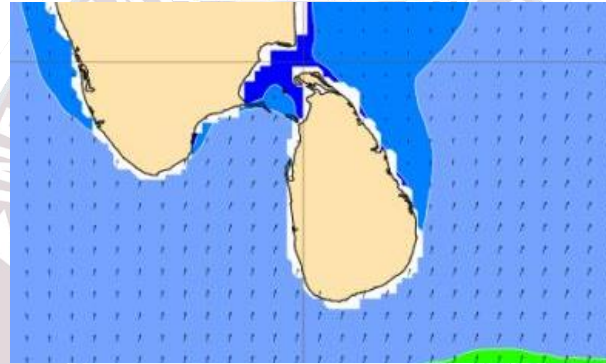
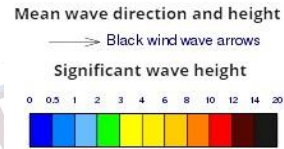


Issued at 10.00 p.m. on 12 October 2023
Marine Weather Division, National Meteorological Centre, Department
of Meteorology.

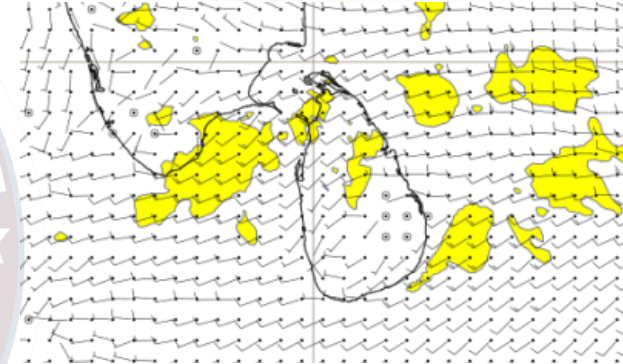
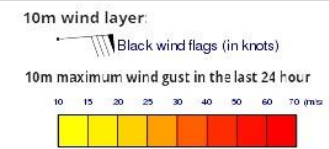
Wind and Rainfall Forecast (Total precipitation for 24 hrs)



Significant wave height (in meters)



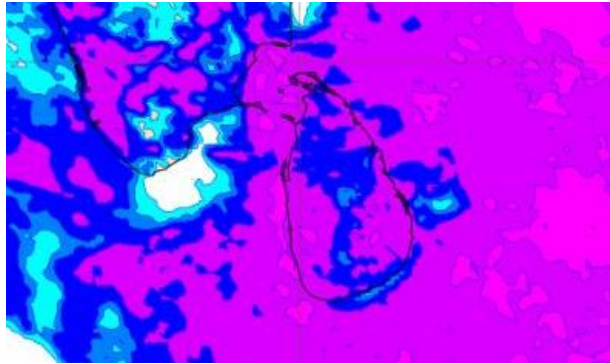
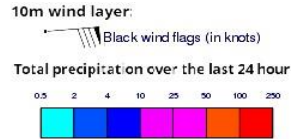
Wind Gust (m/s)



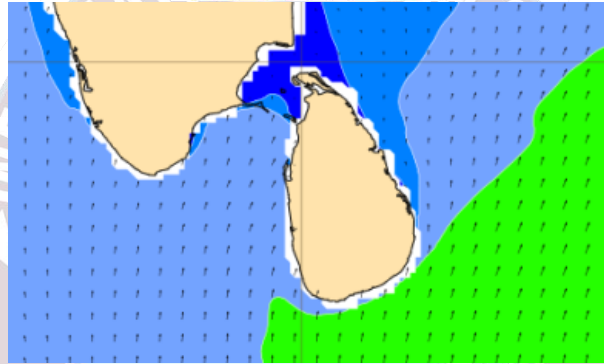
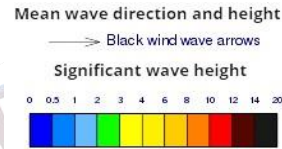
Showers or thundershowers will occur at several places in the sea area extending from Puttalam to Hambantota via Colombo and Galle. Showers or thundershowers may occur at several places in other sea areas around the island, particularly during afternoon or night.

Wind speed will be 20-30 kmph in the sea areas around the island. The sea area extending from Puttalam to Kankasanturai via Mannar and from Hambantota to Pottuvil can be moderately rough at times as the wind speed may increase up to 40 kmph at times.

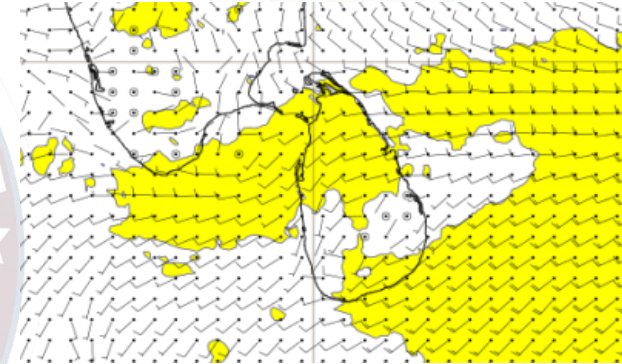
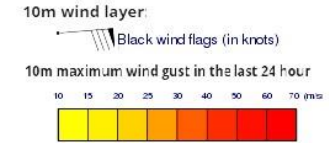
Wind and Rainfall Forecast (Total precipitation for 24 hrs)



Significant wave height (in meters)



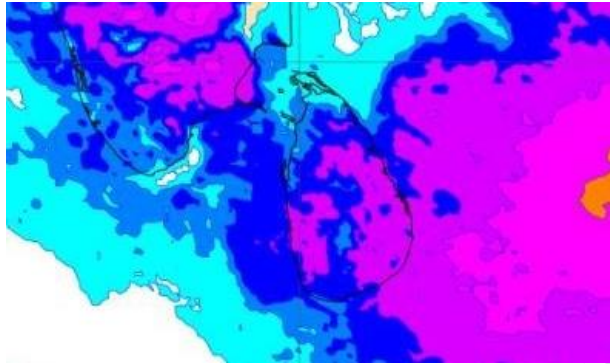
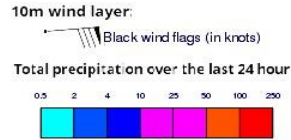
Wind Gust (m/s)



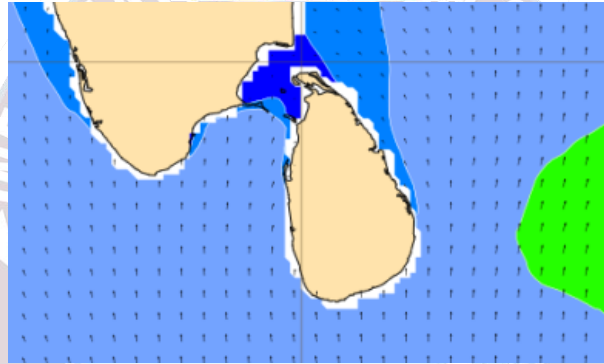
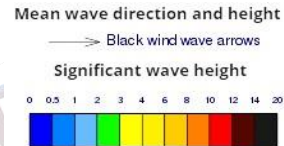
Showers or thundershowers will occur at several places in the sea area extending from Kankasanturai to Galle via Puttalam and Colombo. Showers or thundershowers may occur at several places in other sea areas around the island, particularly during afternoon or night.

Wind speed will be 25-35 kmph in the sea areas around the island. The sea area extending from Puttalam to Kankasanturai via Mannar and from Hambantota to Pottuvil can be fairly rough at times as the wind speed may increase up to 45 kmph at times.

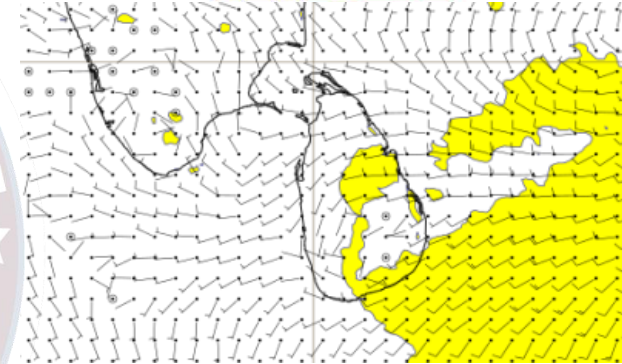
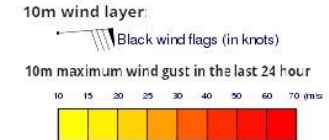
Wind and Rainfall Forecast (Total precipitation for 24 hrs)



Significant wave height (in meters)



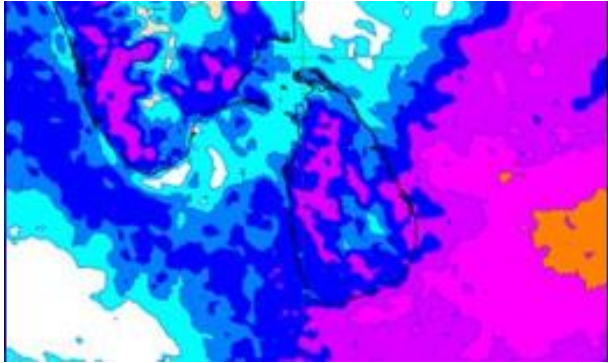
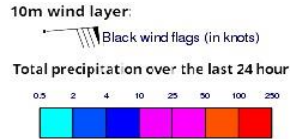
Wind Gust (m/s)



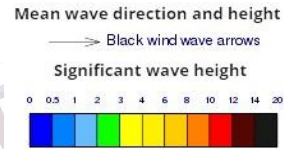
Showers or thundershowers will occur at a few places in the sea area extending from Puttalam to Galle via Colombo. Showers or thundershowers may occur at several places in other sea areas around the island, particularly during afternoon or night.

Wind speed will be 25-35 kmph in the sea areas around the island. The sea area extending from Hambantota to Pottuvil can be fairly rough at times as the wind speed may increase up to 45 kmph at times.

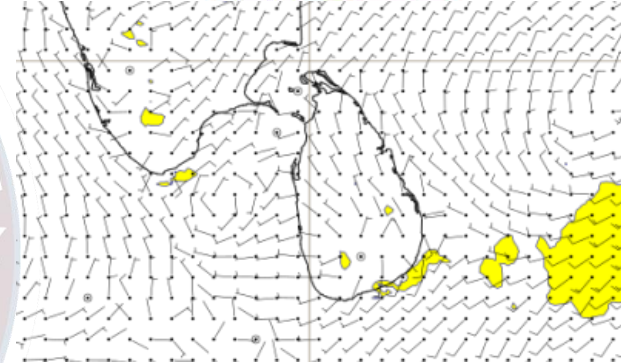
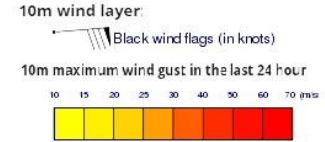
Wind and Rainfall Forecast (Total precipitation for 24 hrs)



Significant wave height (in meters)



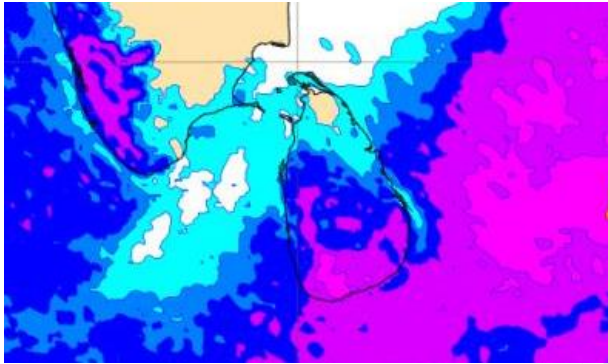
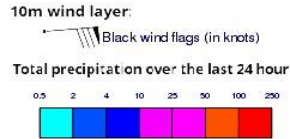
Wind Gust (m/s)



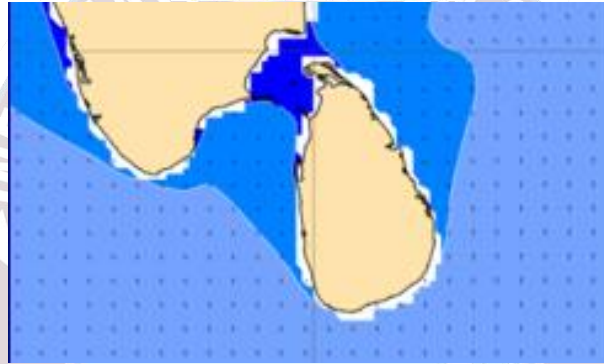
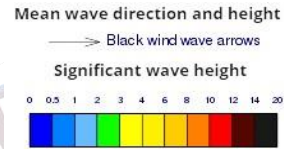
Showers or thundershowers will occur at several places in the sea area around the island.

Wind speed will be 20-30 kmph in the sea areas around the island. The sea area extending from Hambantota to Pottuvil can be moderately rough at times as the wind speed may increase up to 40 kmph at times.

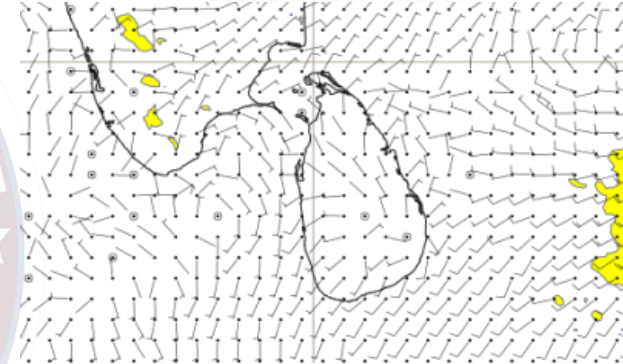
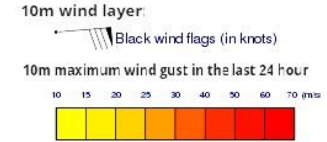
Wind and Rainfall Forecast (Total precipitation for 24 hrs)



Significant wave height (in meters)



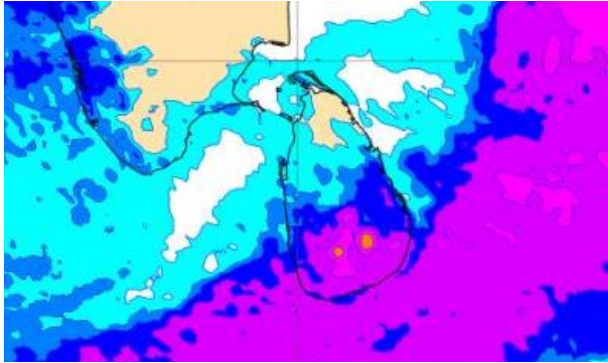
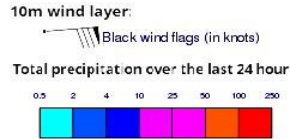
Wind Gust (m/s)



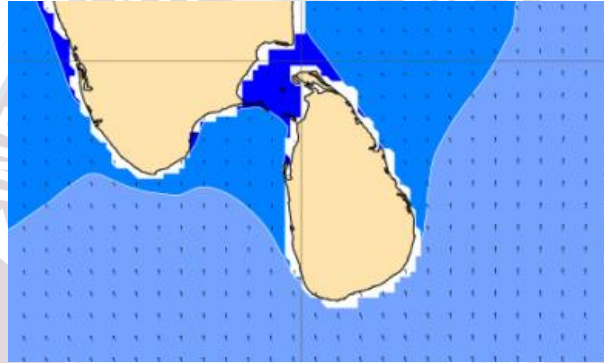
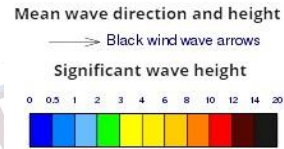
Showers or thundershowers will occur at several places in the sea area around the island.

Wind speed will be 20-30 kmph in the sea areas around the island at times

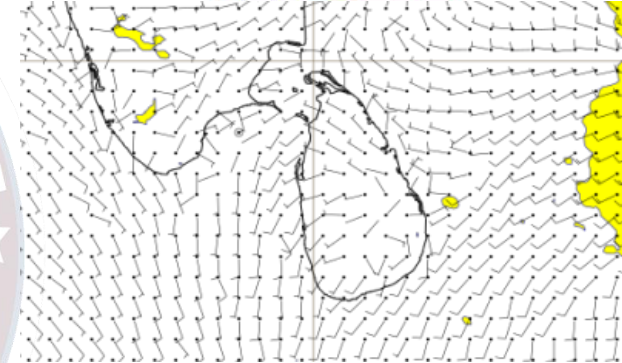
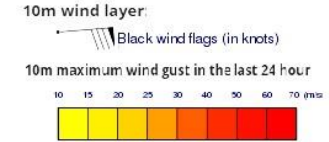
Wind and Rainfall Forecast (Total precipitation for 24 hrs)



Significant wave height (in meters)



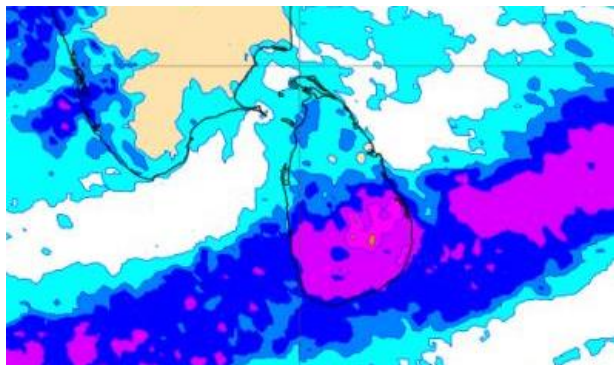
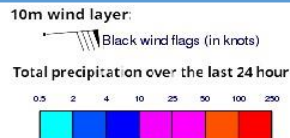
Wind Gust (m/s)



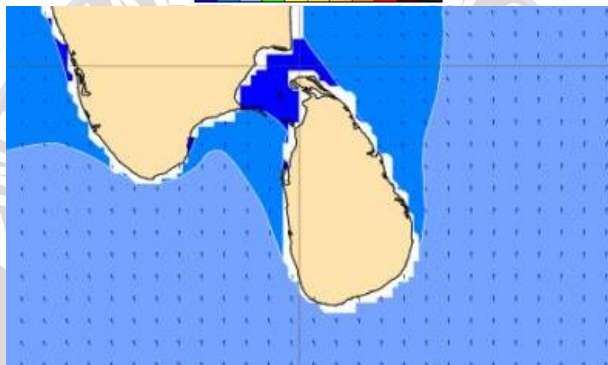
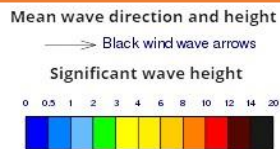
Showers or thundershowers will occur at a few places in the sea areas off the coast extending from Puttalam to Galle via Colombo. Showers or thundershowers may occur at several places in the sea area extending from Galle to Pottuvil via Hambantota particularly during the evening or night.

Wind speed will be 20-30 kmph in the sea areas around the island.

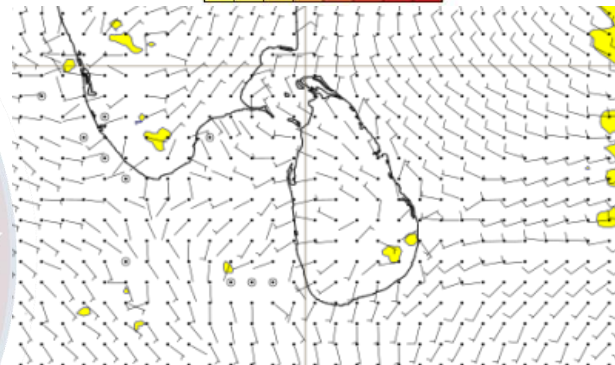
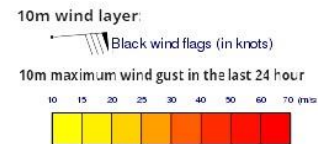
Wind and Rainfall Forecast (Total precipitation for 24 hrs)



Significant wave height (in meters)



Wind Gust (m/s)



Showers or thundershowers will occur at a few places in the sea areas off the coast extending from Puttalam to Galle via Colombo. Showers or thundershowers may occur at a few places in the sea area extending from Galle to Pottuvil via Hambantota particularly during the evening or night.

Wind speed will be 20-30 kmph in the sea areas around the island.

The logo of the Information Fusion Centre Colombo - Sri Lanka is a circular emblem. It features a map of Sri Lanka in the center, surrounded by a blue ring. The text "INFORMATION FUSION CENTRE" is written in a semi-circle at the top, and "COLOMBO - SRI LANKA" is written in a semi-circle at the bottom. The entire logo is rendered in a light, faded style.

Thank you!