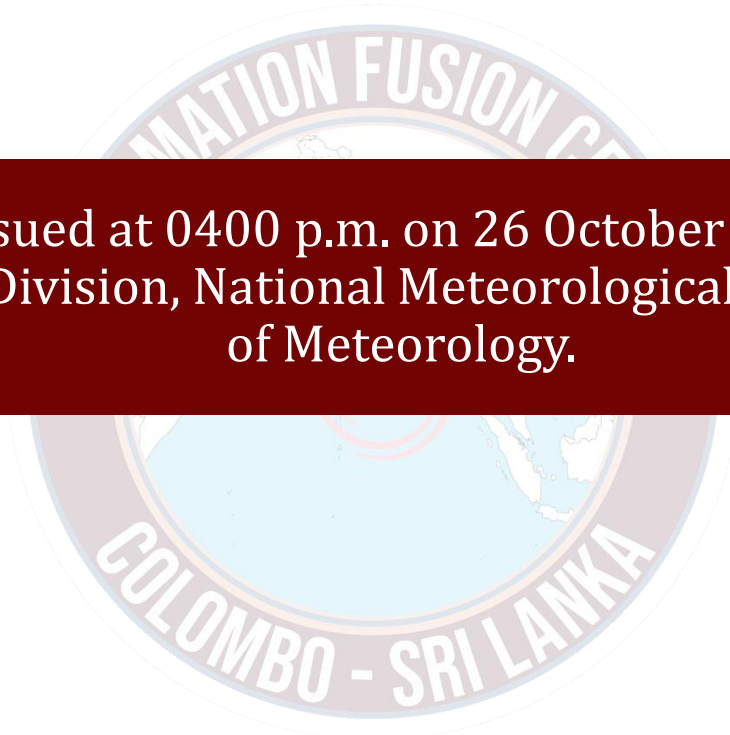




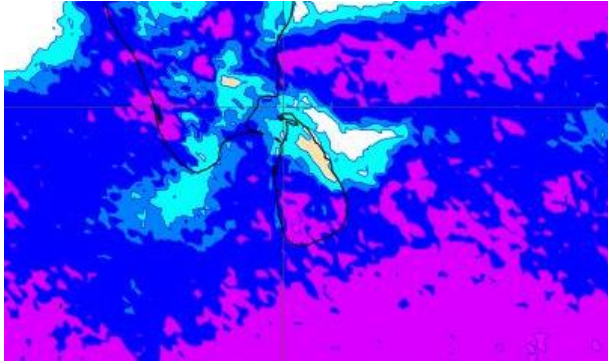
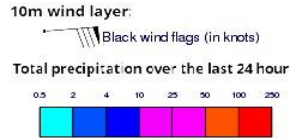
INFORMATION FUSION CENTRE COLOMBO

06 DAYS FORECAST FOR COASTAL AREAS AROUND SRI LANKA

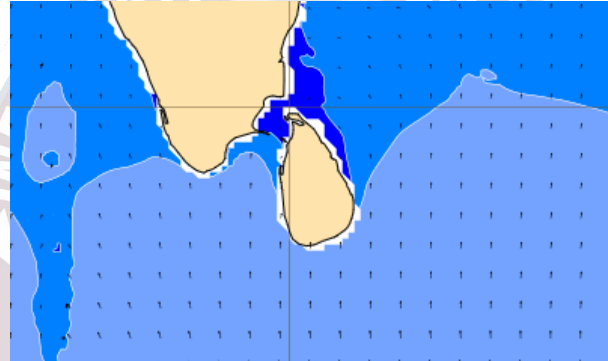
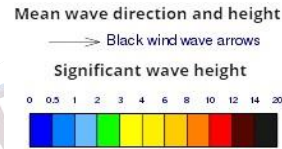


Issued at 0400 p.m. on 26 October 2023
Marine Weather Division, National Meteorological Centre, Department
of Meteorology.

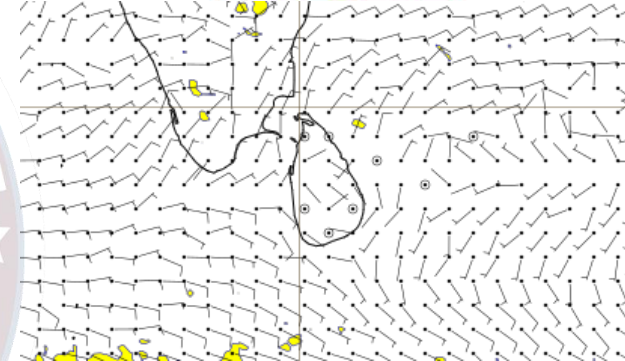
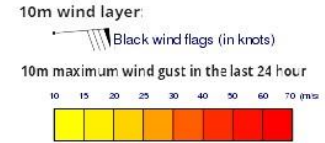
Wind and Rainfall Forecast (Total precipitation for 24 hrs)



Significant wave height (in meters)



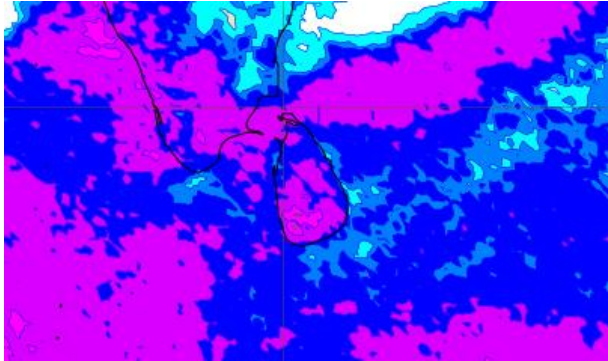
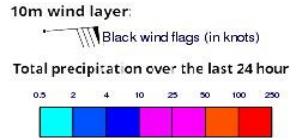
Wind Gust (m/s)



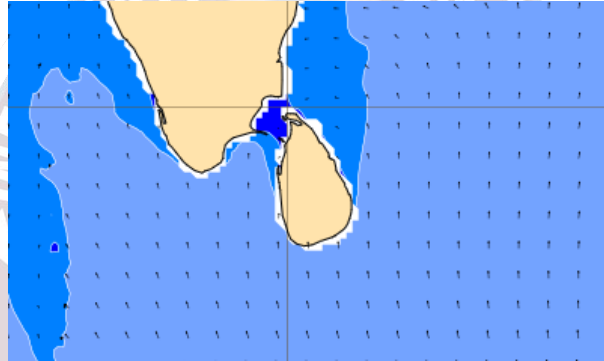
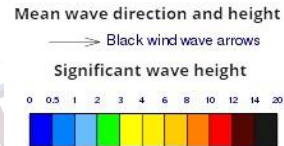
Showers or thundershowers will occur at several places in the sea areas off the coast extending from Puttalam to Batticaloa via Colombo, Galle, and Hambantota particularly during afternoon or night.

Wind speed will be 20-30 kmph in the sea areas around the island.

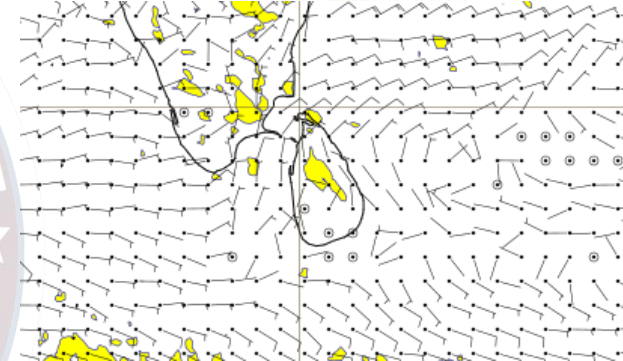
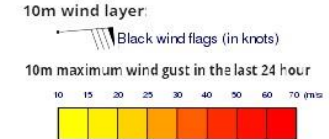
Wind and Rainfall Forecast (Total precipitation for 24 hrs)



Significant wave height (in meters)



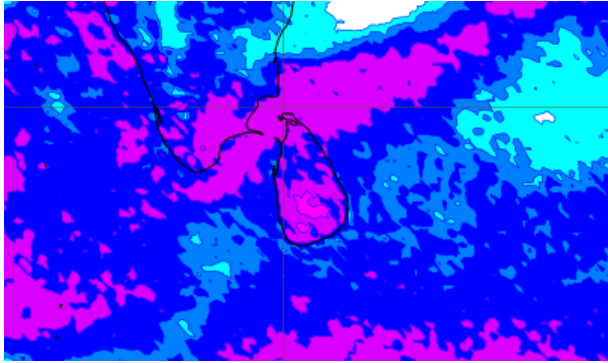
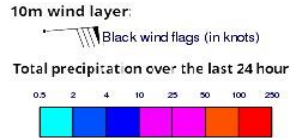
Wind Gust (m/s)



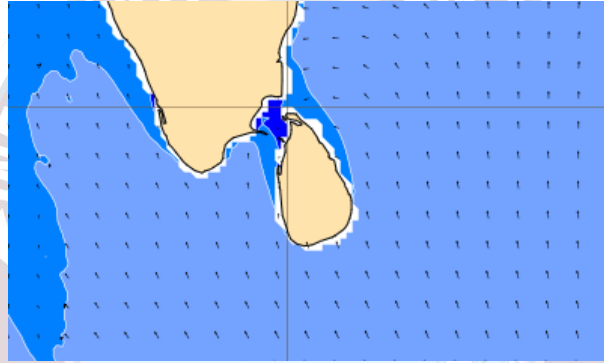
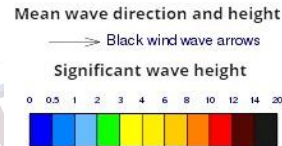
Showers or thundershowers will occur in the sea areas off the coast extending from Galle to Kankasanthurei via Colombo, Puttalam and Mannar particularly during afternoon or night.

Wind speed will be 20-30 kmph in the sea areas around the island.

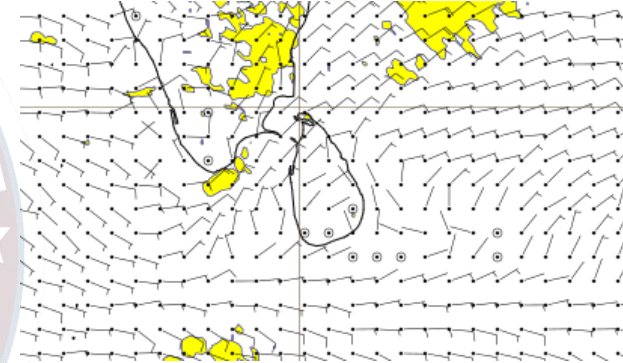
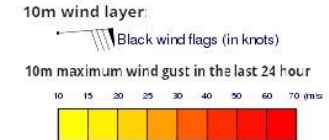
Wind and Rainfall Forecast (Total precipitation for 24 hrs)



Significant wave height (in meters)



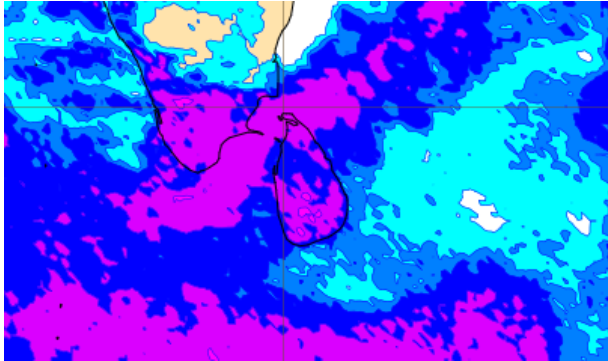
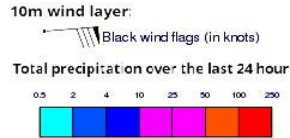
Wind Gust (m/s)



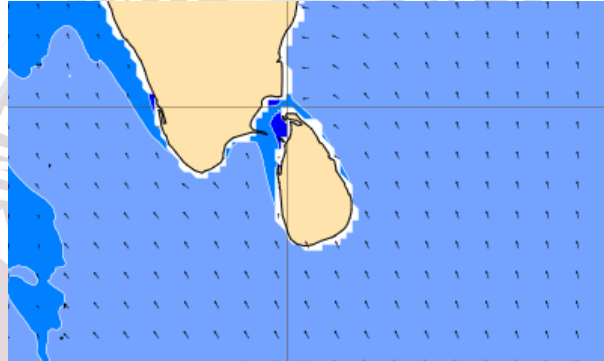
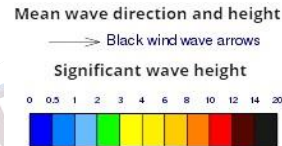
Showers or thundershowers will occur in the sea areas off the coast extending from Puttalam to Trincomalee via Mannar and Kankasanthurei particularly during afternoon or night. Showers or thundershowers will occur at several places in the other sea areas around the island during afternoon or night.

Wind speed will be 20-30 kmph in the sea areas around the island.

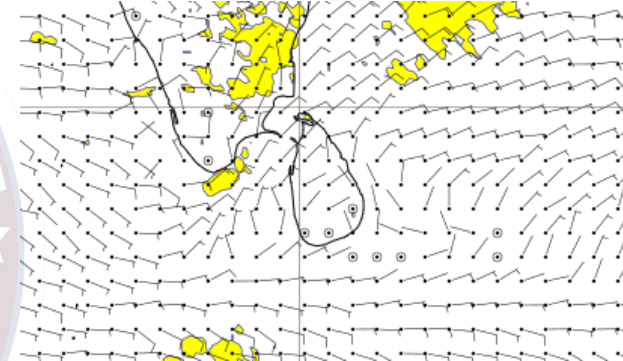
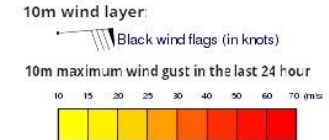
Wind and Rainfall Forecast (Total precipitation for 24 hrs)



Significant wave height (in meters)



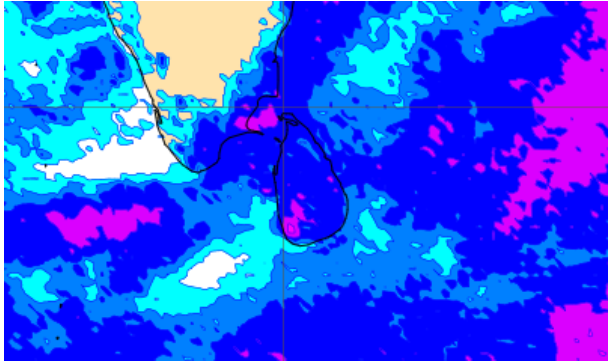
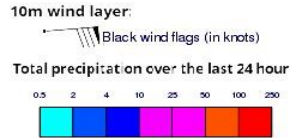
Wind Gust (m/s)



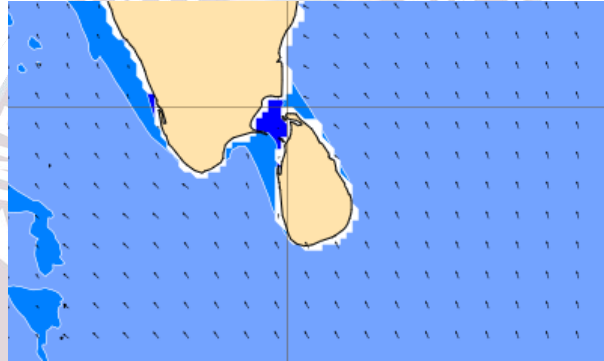
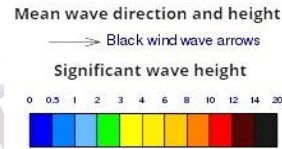
Showers or thundershowers will occur in the sea areas off the coast extending from Puttalam to Trincomalee via Mannar and Kankasanthurei particularly during afternoon or night. Showers or thundershowers will occur at several places in the other sea areas around the island during afternoon or night.

Wind speed will be 20-30 kmph in the sea areas around the island.

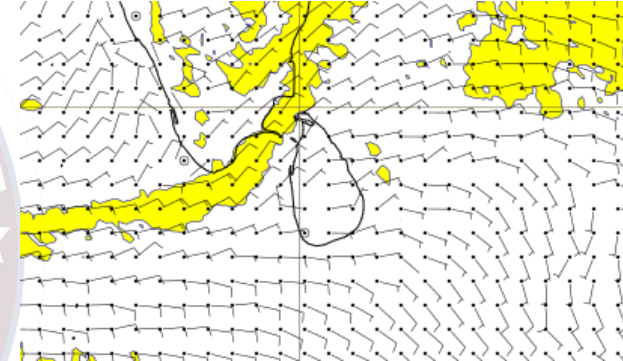
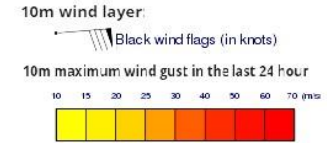
Wind and Rainfall Forecast (Total precipitation for 24 hrs)



Significant wave height (in meters)



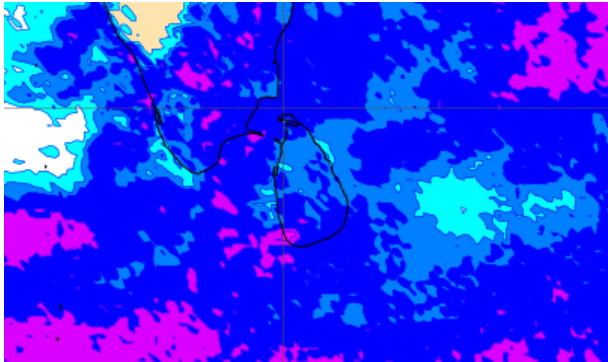
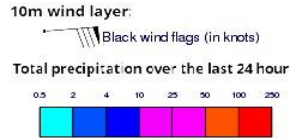
Wind Gust (m/s)



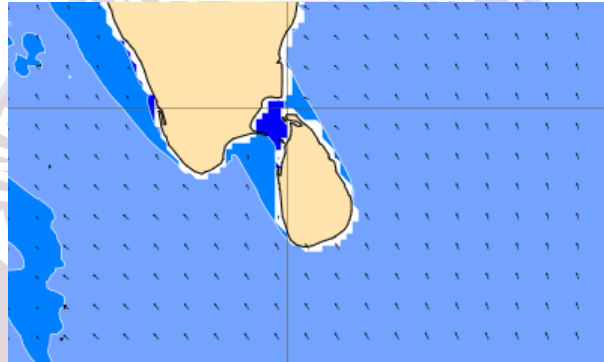
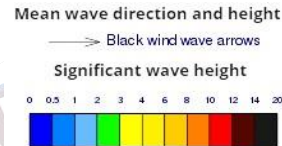
Showers or thundershowers will occur at several places in the sea areas off the coast extending from Puttalam to Batticaloa via Mannar, Kankasanthurei and Trincomalee particularly during afternoon or night. Showers or thundershowers will occur at a few places in the other sea area around the island during afternoon or night.

Wind speed will be 20-30 kmph in the sea areas around the island.

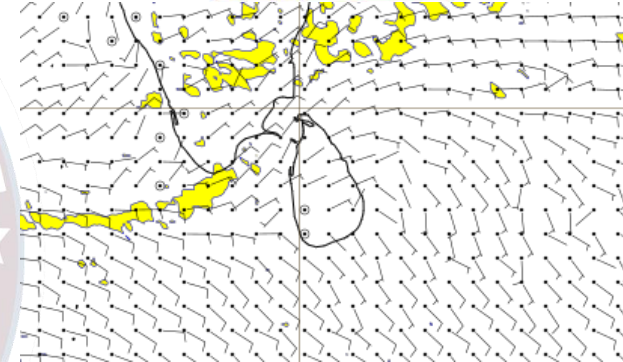
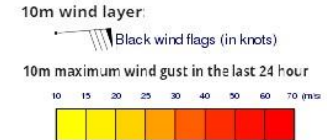
Wind and Rainfall Forecast (Total precipitation for 24 hrs)



Significant wave height (in meters)



Wind Gust (m/s)



Showers or thundershowers will occur at aShowers or thundershowers will occur at several places in the sea areas off the coast extending from Puttalam to Hambanthota via Colombo and Galle, and from Mannar to Kankasanthurei particularly during afternoon or night. Showers or thundershowers will occur at a few places in the other sea area around the island during afternoon or night.

Wind speed will be 20-30 kmph in the sea areas around the island.

The logo of the Information Fusion Centre Colombo - Sri Lanka is a circular emblem. It features a map of the Indian subcontinent and surrounding regions in light blue. The text "INFORMATION FUSION CENTRE" is written in a semi-circle at the top, and "COLOMBO - SRI LANKA" is written in a semi-circle at the bottom, both in a light blue-grey color. The entire logo is faded and serves as a background for the slide.

Thank you!