



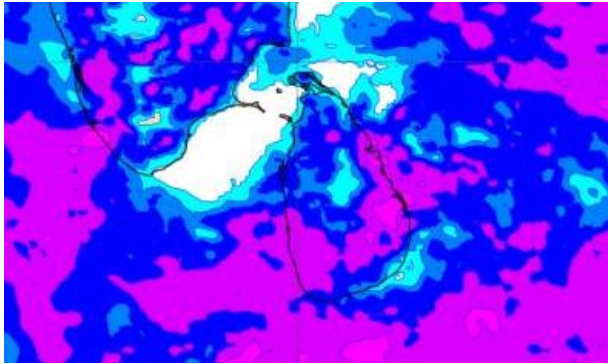
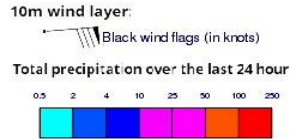
INFORMATION FUSION CENTRE COLOMBO

08 DAYS FORECAST FOR COASTAL AREAS AROUND SRI LANKA

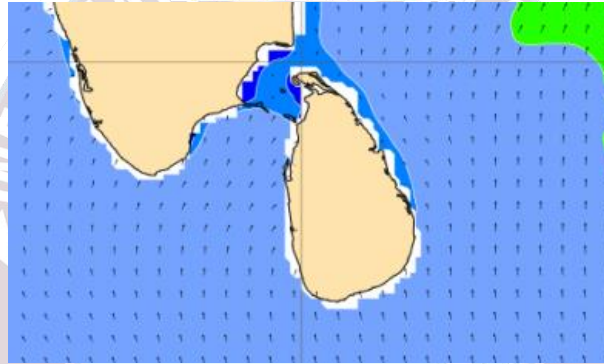
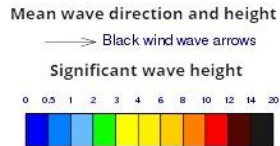


Issued at 10.00 p.m. on 19th September 2023
Marine Weather Division, National Meteorological Centre,
Department of Meteorology.

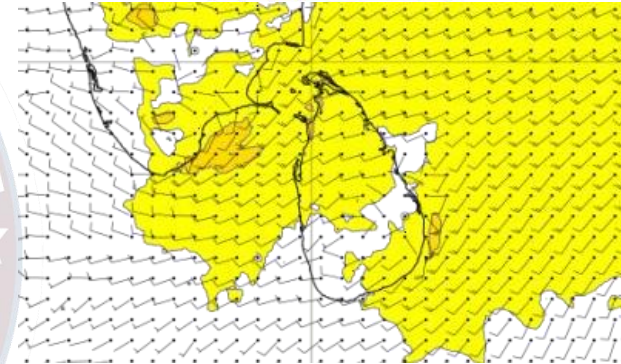
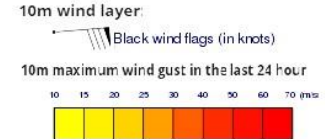
Wind and Rainfall Forecast (Total precipitation for 24 hrs)



Significant wave height (in meters)



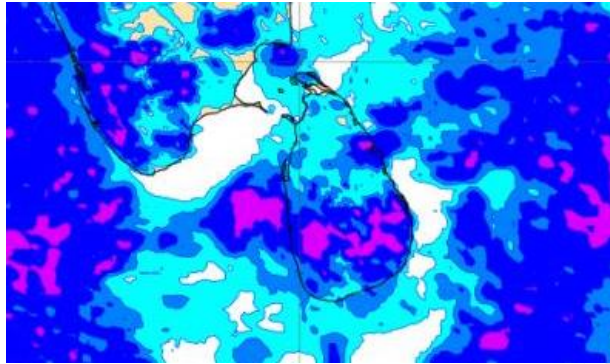
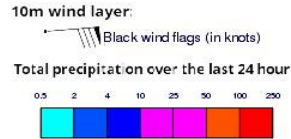
Wind Gust (m/s)



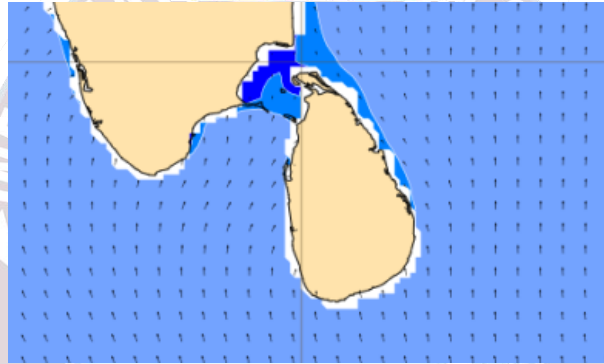
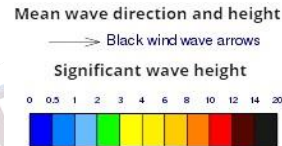
Showers or thundershowers will occur at several places in the sea areas off the coast extending from Puttalam to Hambantota via Colombo and Galle.

Wind speed will be 25-35 kmph in the sea areas around the island. The sea area extending from Hambantota to Pottuvil and from Puttalam to Kankasanturai via Mannar can be fairly rough at times as the wind speed may increase up to 45-55 kmph at times.

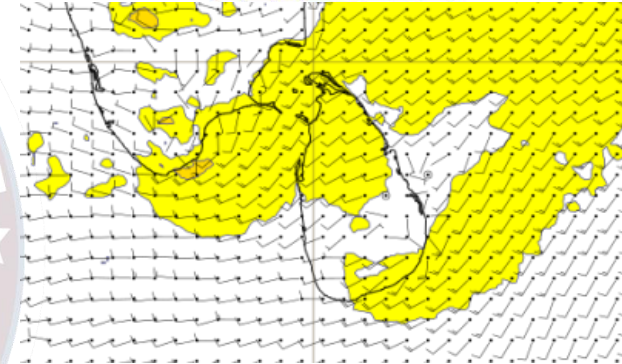
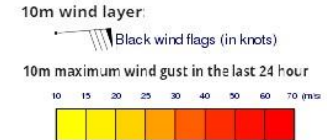
Wind and Rainfall Forecast (Total precipitation for 24 hrs)



Significant wave height (in meters)



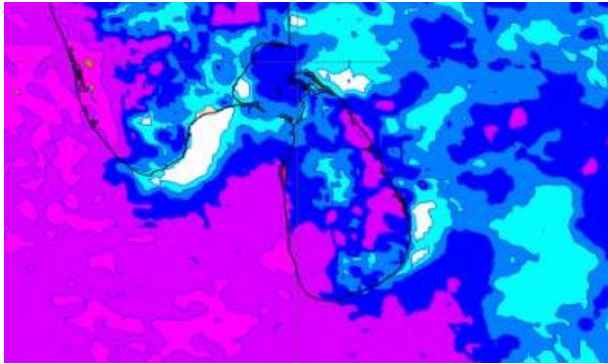
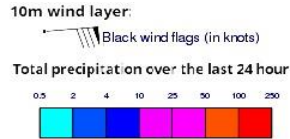
Wind Gust (m/s)



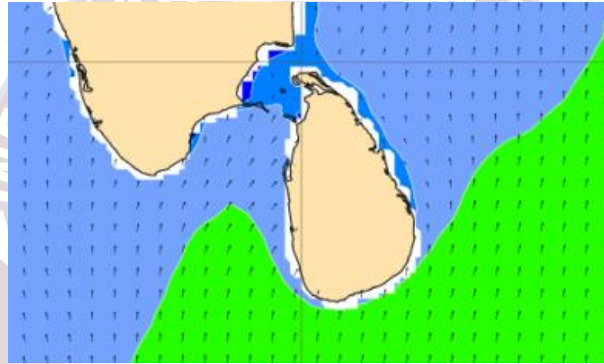
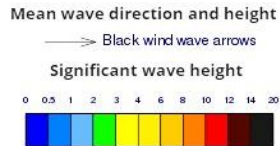
Showers or thundershowers will occur at a few places in the sea areas off the coast extending from Puttalam to Matara via Colombo and Galle.

Wind speed will be 25-35 kmph in the sea areas around the island. The sea area extending from Hambantota to Pottuvil and from Puttalam to Kankasanturai via Mannar can be fairly rough at times as the wind speed may increase up to 40-45 kmph at times.

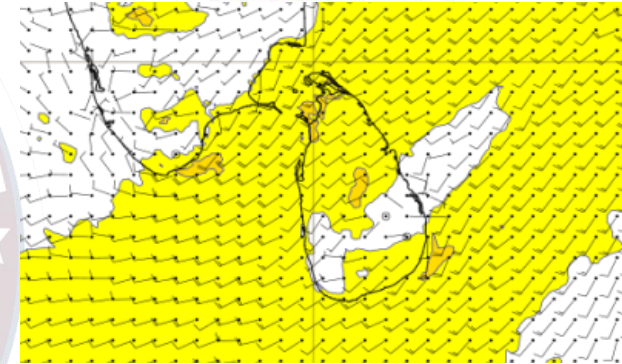
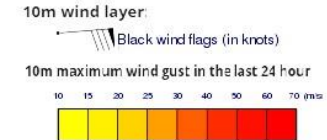
Wind and Rainfall Forecast (Total precipitation for 24 hrs)



Significant wave height (in meters)



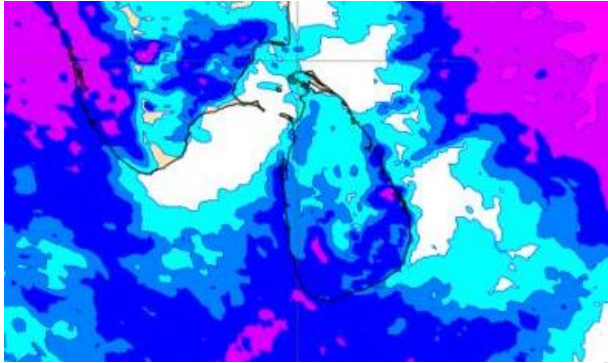
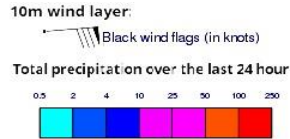
Wind Gust (m/s)



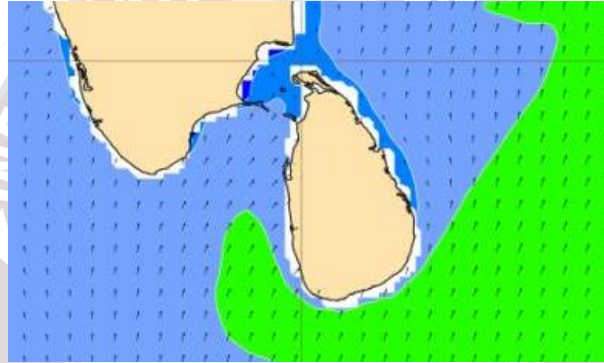
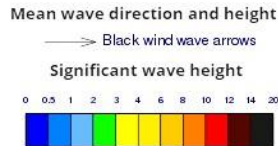
Showers or thundershowers will occur at several places in the sea areas off the coast extending from Puttalam to Matara via Colombo and Galle.

Wind speed will be 25-35 kmph in the sea areas around the island. The sea area extending from Hambantota to Pottuvil and from Puttalam to Kankasanturai via Mannar can be fairly rough at times as the wind speed may increase up to 40-45 kmph at times.

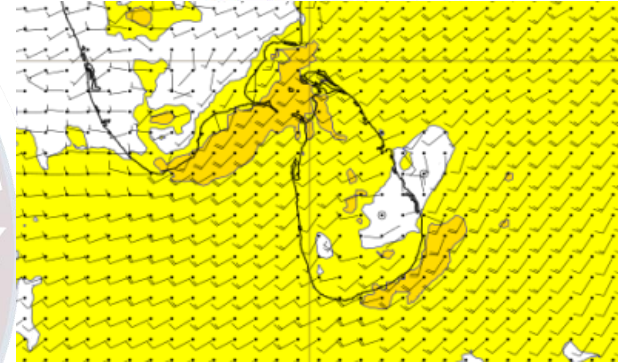
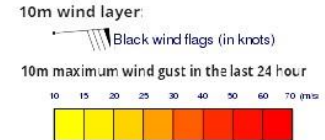
Wind and Rainfall Forecast (Total precipitation for 24 hrs)



Significant wave height (in meters)



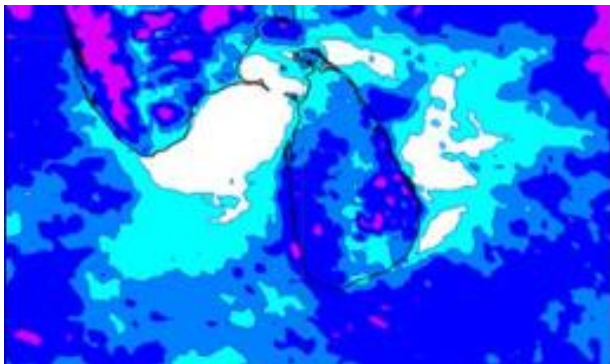
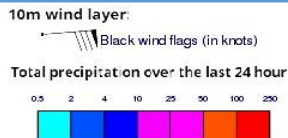
Wind Gust (m/s)



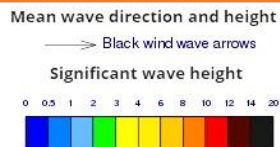
Showers or thundershowers will occur at a few places in the sea areas off the coast extending from Puttalam to Matara via Colombo and Galle.

Wind speed will be 25-35 kmph in the sea areas around the island. The sea area extending from Pottuvil to Batticaloa and from Puttalam to Kankasanturai via Mannar can be fairly rough at times as the wind speed may increase up to 45-50 kmph at times.

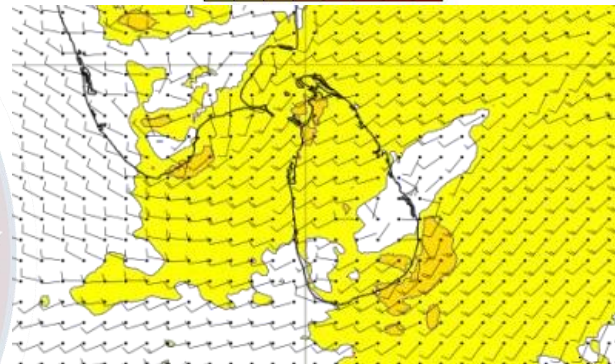
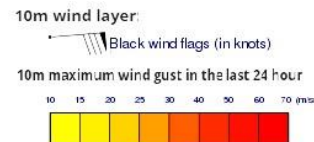
Wind and Rainfall Forecast (Total precipitation for 24 hrs)



Significant wave height (in meters)



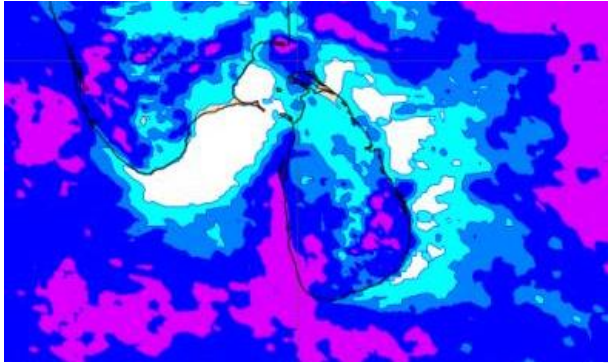
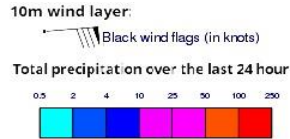
Wind Gust (m/s)



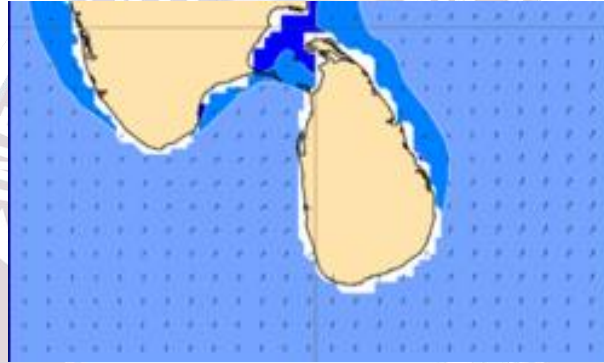
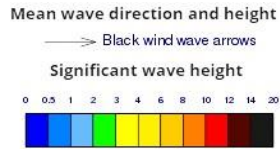
Showers or thundershowers will occur at a few places in the sea areas off the coast extending from Puttalam to Hambantota via Colombo and Galle.

Wind speed will be 25-35 kmph in the sea areas around the island. The sea area extending from Pottuvil to Batticaloa and from Puttalam to Kankasanturai via Mannar can be fairly rough at times as the wind speed may increase up to 45-50 kmph at times.

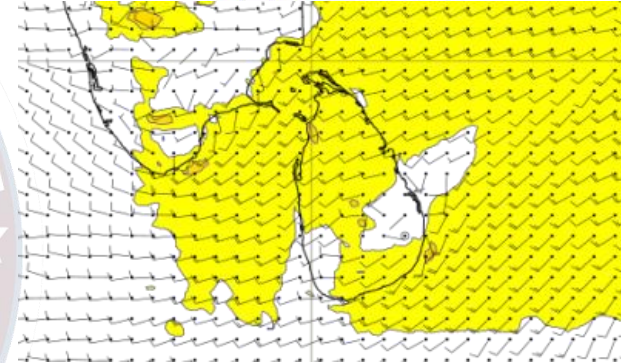
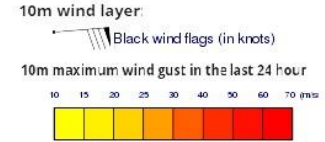
Wind and Rainfall Forecast (Total precipitation for 24 hrs)



Significant wave height (in meters)



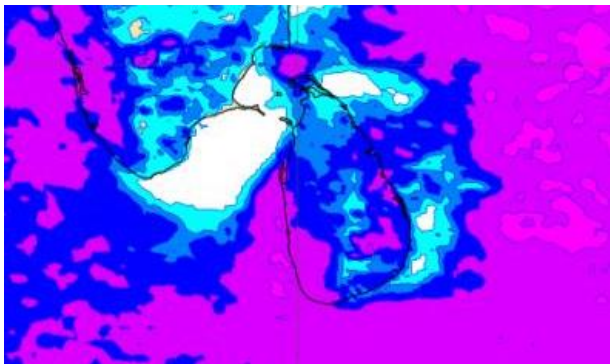
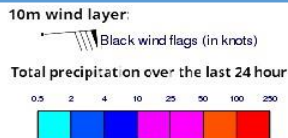
Wind Gust (m/s)



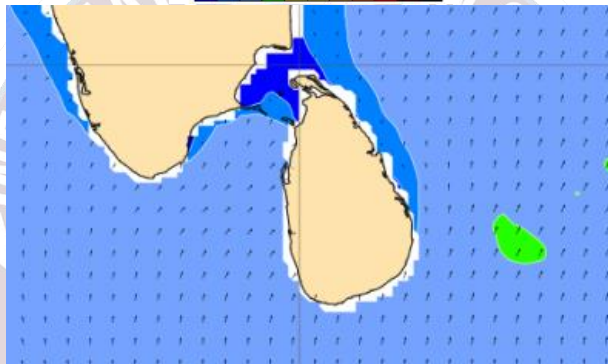
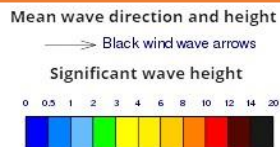
Showers or thundershowers will occur at several places in the sea areas off the coast extending from Puttalam to Hambantota via Colombo and Galle.

Wind speed will be 25-35 kmph in the sea areas around the island. The sea area extending from Hambantota to Pottuvil and from Puttalam to Kankasanturai via Mannar can be fairly rough at times as the wind speed may increase up to 45-50 kmph at times.

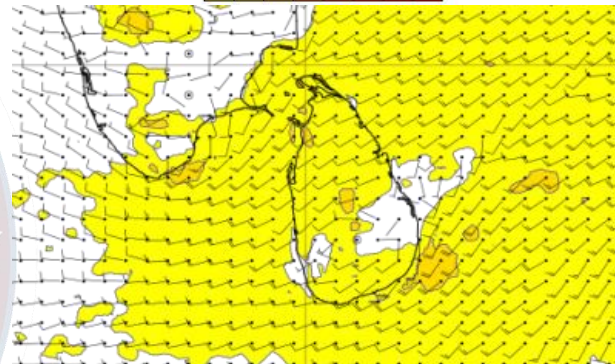
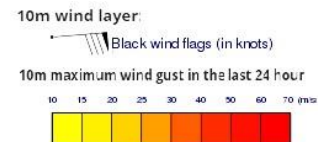
Wind and Rainfall Forecast (Total precipitation for 24 hrs)



Significant wave height (in meters)



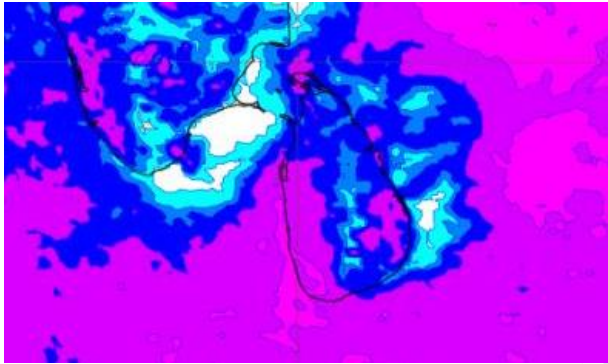
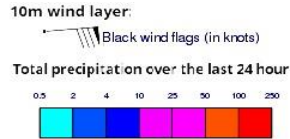
Wind Gust (m/s)



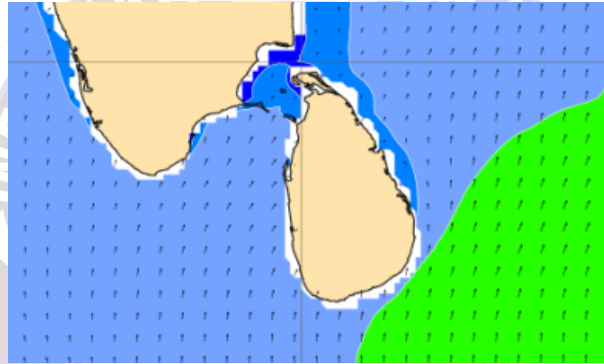
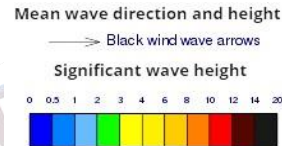
Showers or thundershowers will occur at several places in the sea areas off the coast extending from Puttalam to Hambantota via Colombo and Galle.

Wind speed will be 25-35 kmph in the sea areas around the island. The sea area extending from Hambantota to Pottuvil can be rough at times as the wind speed may increase up to 45-55 kmph at times.

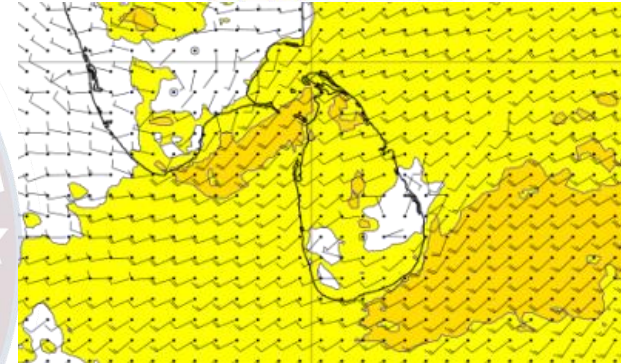
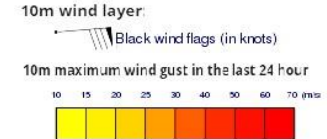
Wind and Rainfall Forecast (Total precipitation for 24 hrs)



Significant wave height (in meters)



Wind Gust (m/s)



Showers or thundershowers will occur at several places in the sea areas off the coast extending from Puttalam to Hambantota via Colombo and Galle.

Wind speed will be 25-35 kmph in the sea areas around the island. The sea area extending from Hambantota to Pottuvil and from Puttalam to Kankasanturai via Mannar can be rough at times as the wind speed may increase up to 45-55 kmph at times.

The logo of the Information Fusion Centre Colombo - Sri Lanka is a circular emblem. It features a map of South and Central Asia in the center, with the text "INFORMATION FUSION CENTRE" arched across the top and "COLOMBO - SRI LANKA" arched across the bottom. The logo is rendered in a light, semi-transparent style.

Thank you!