



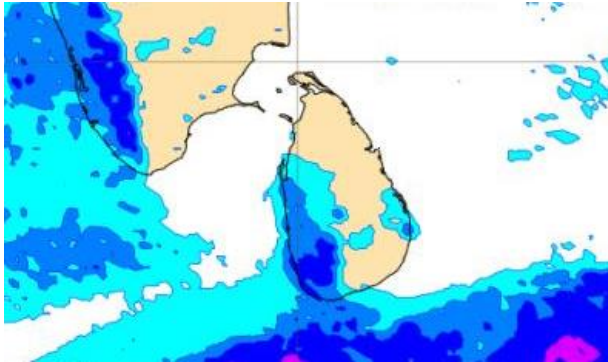
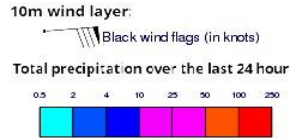
# **INFORMATION FUSION CENTRE COLOMBO**

**08 DAYS FORECAST FOR COASTAL AREAS AROUND SRI LANKA**

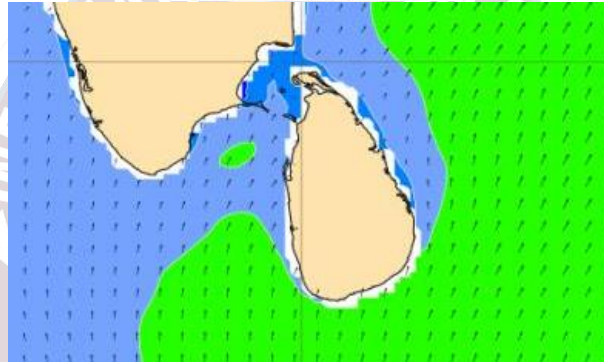
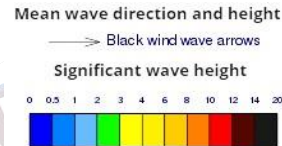


**Issued at 10.00 p.m. on 17 August 2023**  
**Marine Weather Division, National Meteorological Centre,**  
**Department of Meteorology.**

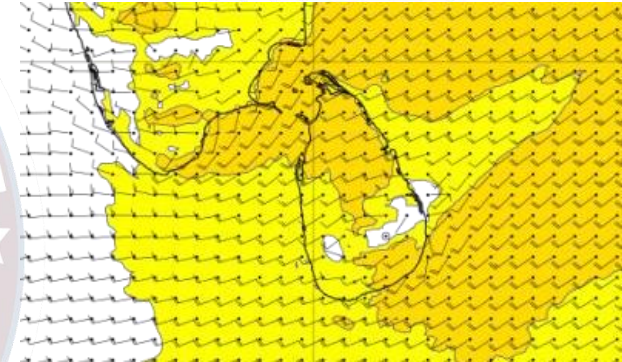
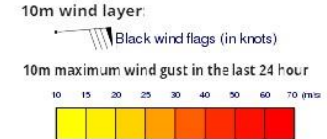
## Wind and Rainfall Forecast (Total precipitation for 24 hrs)



## Significant wave height (in meters)



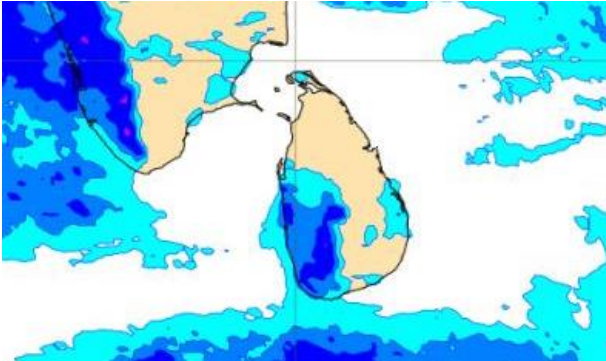
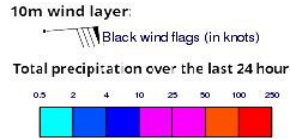
## Wind Gust (m/s)



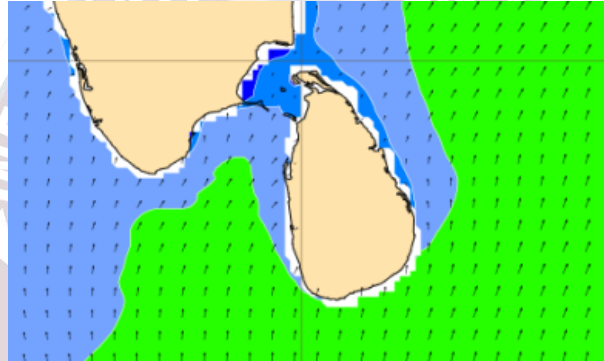
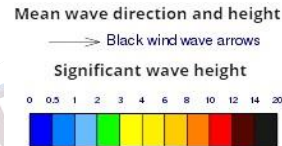
Showers or thundershowers will occur at a few places in the sea areas off the coast extending from Colombo to Matara via Galle.

Wind speed will be 25-35 kmph in the sea areas around the island. The sea area extending from Pottuvil to Hambantota and from Puttalam to Trincomalee via Kankasanturai and Mannar can be rough at times as the wind speed may increase up to 45-55 kmph at times.

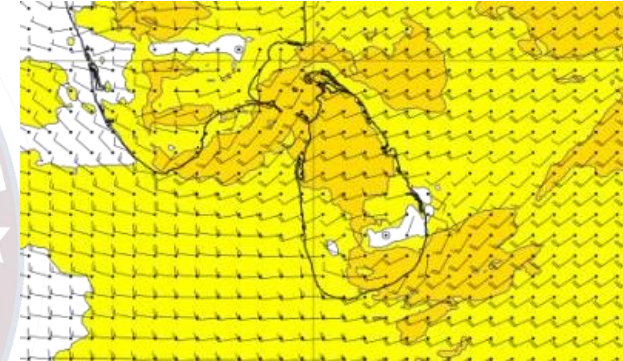
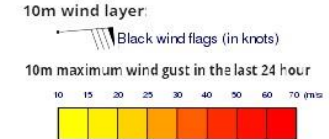
## Wind and Rainfall Forecast (Total precipitation for 24 hrs)



## Significant wave height (in meters)



## Wind Gust (m/s)

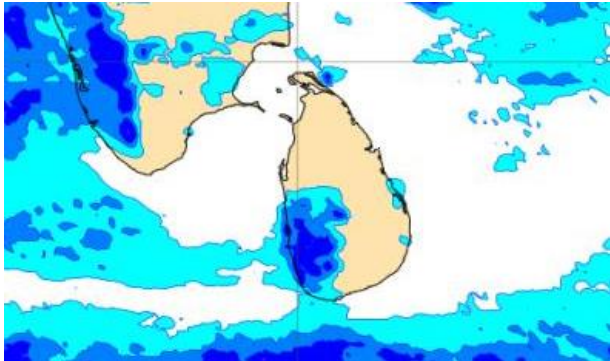
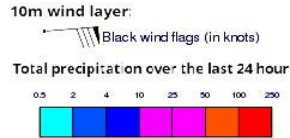


Showers or thundershowers will occur at a few places in the sea areas off the coast extending from Colombo to Matara via Galle.

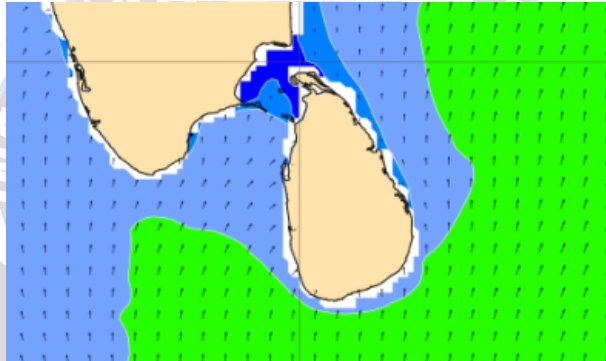
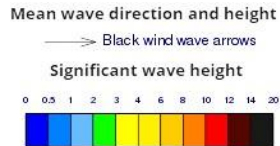
Wind speed will be 25-35 kmph in the sea areas around the island. The sea area extending from Pottuvil to Hambantota and from Puttalam to Trincomalee via Kankasanturai and Mannar can be rough at times as the wind speed may increase up to 45-55 kmph at times.



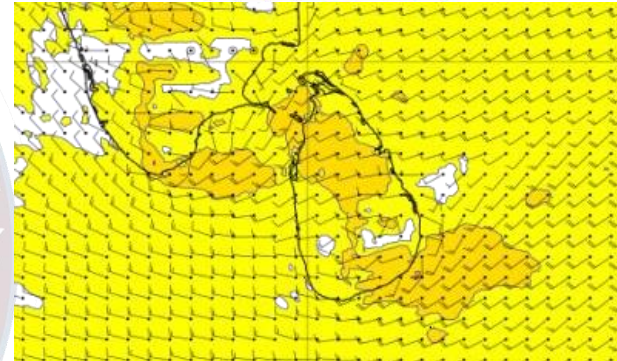
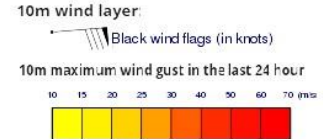
## Wind and Rainfall Forecast (Total precipitation for 24 hrs)



## Significant wave height (in meters)



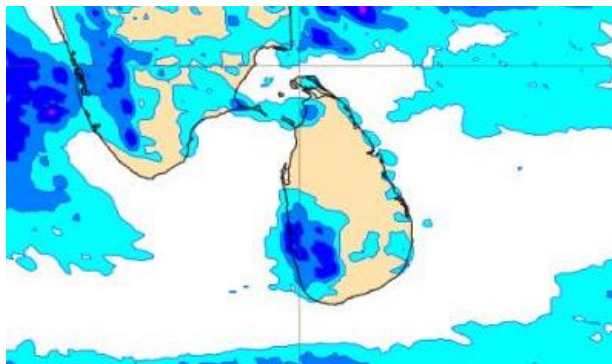
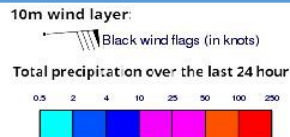
## Wind Gust (m/s)



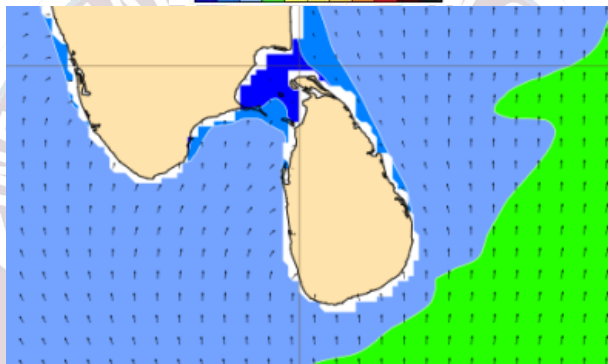
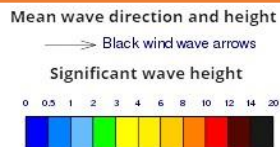
Showers or thundershowers will occur at a few places in the sea areas off the coast extending from Colombo to Matara via Galle.

Wind speed will be 25-35 kmph in the sea areas around the island. The sea area extending from Pottuvil to Hambantota and from Puttalam to Kankasanturai via Mannar can be rough at times as the wind speed may increase up to 45-55 kmph at times.

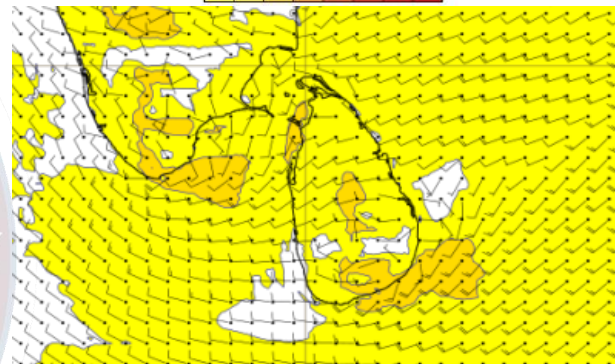
## Wind and Rainfall Forecast (Total precipitation for 24 hrs)



## Significant wave height (in meters)



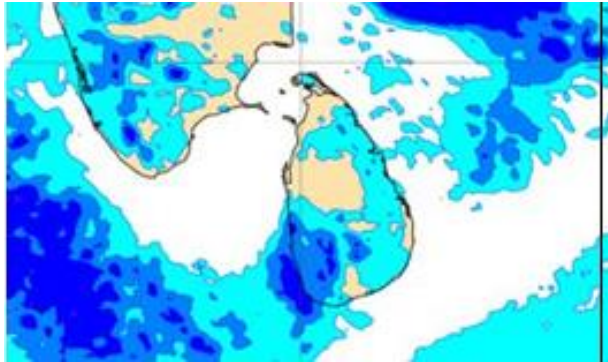
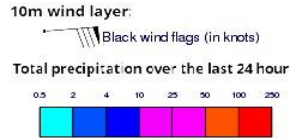
## Wind Gust (m/s)



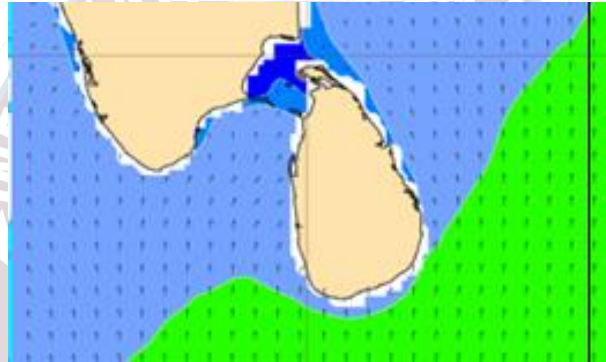
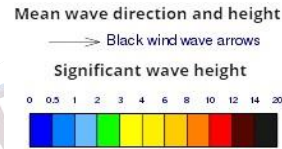
Showers or thundershowers will occur at a few places in the sea areas off the coast extending from Colombo to Matara via Galle.

Wind speed will be 25-35 kmph in the sea areas around the island. The sea area extending from Pottuvil to Hambantota and from Puttalam to Kankasanturai via Mannar can be rough at times as the wind speed may increase up to 45-55 kmph at times.

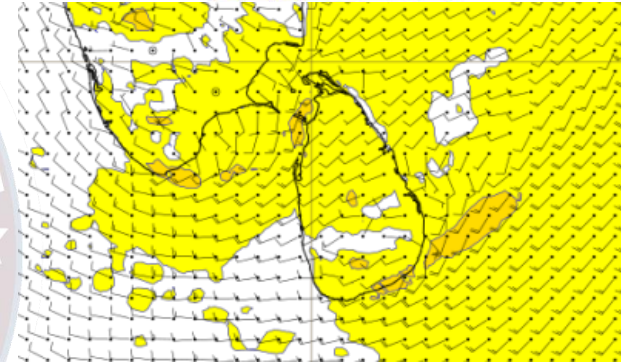
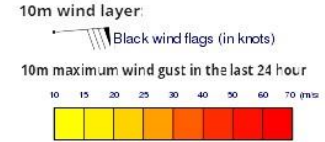
## Wind and Rainfall Forecast (Total precipitation for 24 hrs)



## Significant wave height (in meters)



## Wind Gust (m/s)

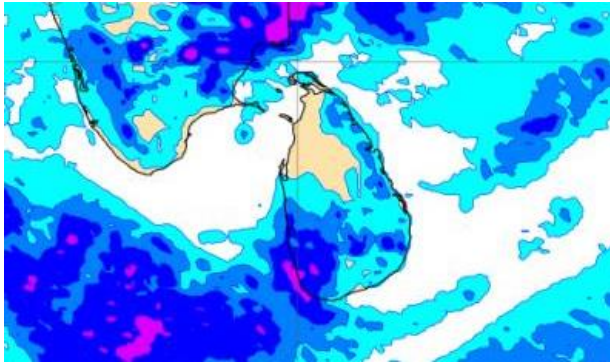
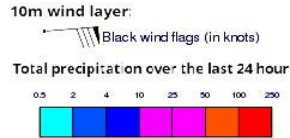


Showers or thundershowers will occur at a few places in the sea areas off the coast extending from Colombo to Matara via Galle.

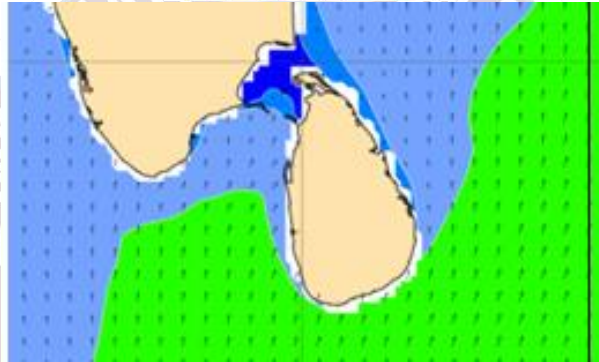
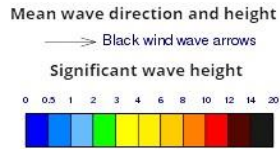
Wind speed will be 25-35 kmph in the sea areas around the island. The sea area extending from Pottuvil to Hambantota and from Puttalam to Kankasanturai via Mannar can be rough at times as the wind speed may increase up to 45-55 kmph at times.



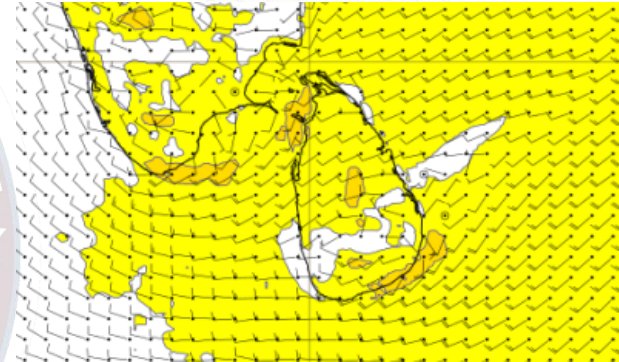
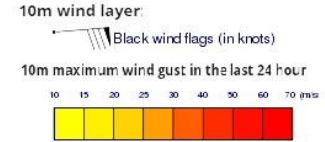
## Wind and Rainfall Forecast (Total precipitation for 24 hrs)



## Significant wave height (in meters)



## Wind Gust (m/s)

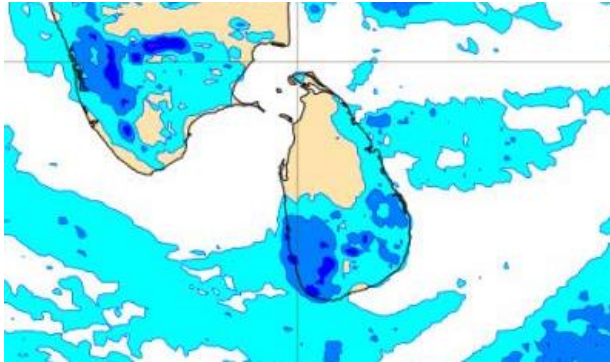
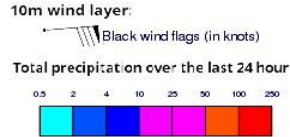


Showers or thundershowers will occur at a few places in the sea areas off the coast extending from Colombo to Matara via Galle.

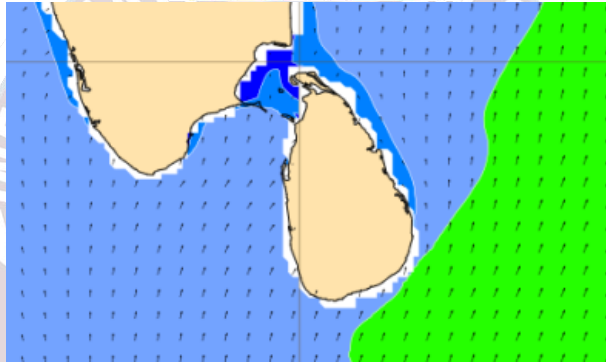
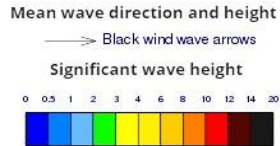
Wind speed will be 25-35 kmph in the sea areas around the island. The sea area extending from Pottuvil to Hambantota and from Puttalam to Kankasanturai via Mannar can be rough at times as the wind speed may increase up to 45-55 kmph at times.



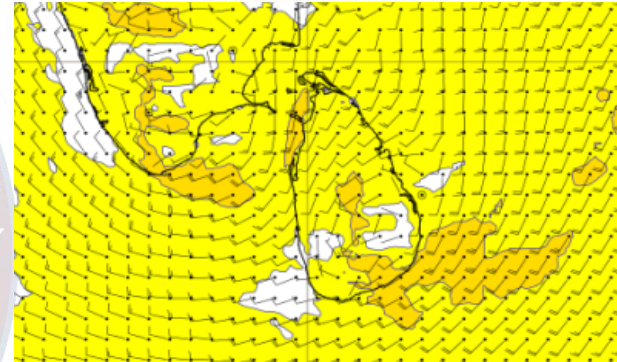
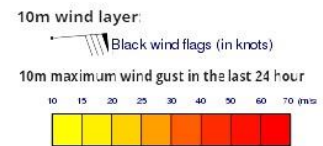
## Wind and Rainfall Forecast (Total precipitation for 24 hrs)



## Significant wave height (in meters)



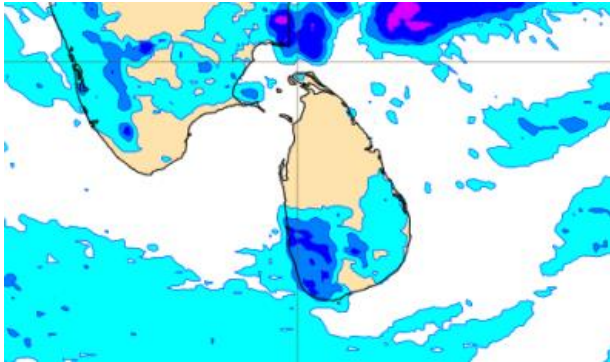
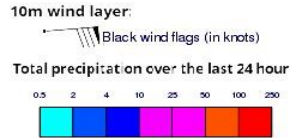
## Wind Gust (m/s)



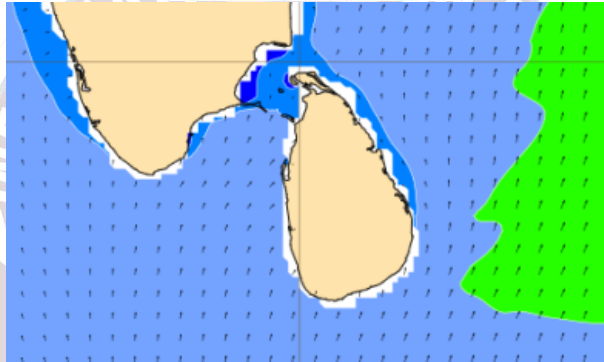
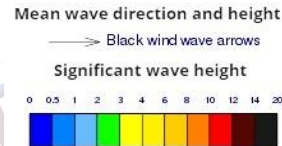
Showers or thundershowers may occur at a few places in the sea areas off the coast extending from Colombo to Galle.

Wind speed will be 25-35 kmph in the sea areas around the island. The sea area extending from Pottuvil to Hambantota and from Puttalam to Kankasanturai via Mannar can be rough at times as the wind speed may increase up to 45-55 kmph at times.

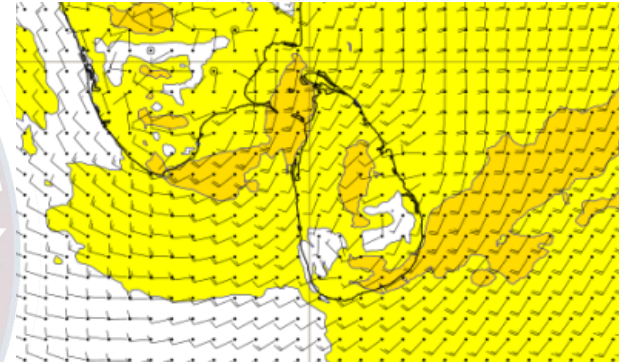
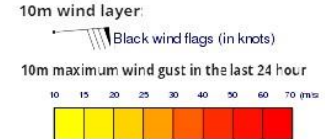
### Wind and Rainfall Forecast (Total precipitation for 24 hrs)



### Significant wave height (in meters)



### Wind Gust (m/s)



Showers or thundershowers may occur at a few places in the sea areas off the coast extending from Colombo to Galle.

Wind speed will be 25-35 kmph in the sea areas around the island. The sea area extending from Pottuvil to Hambantota and from Puttalam to Kankasanturai via Mannar can be rough at times as the wind speed may increase up to 45-55 kmph at times.

The logo is a circular emblem. The outer ring contains the text 'INFORMATION FUSION CENTRE' at the top and 'COLOMBO - SRI LANKA' at the bottom. The inner circle features a map of the Indian subcontinent and surrounding regions, with a blue ocean area below it.

Thank you!