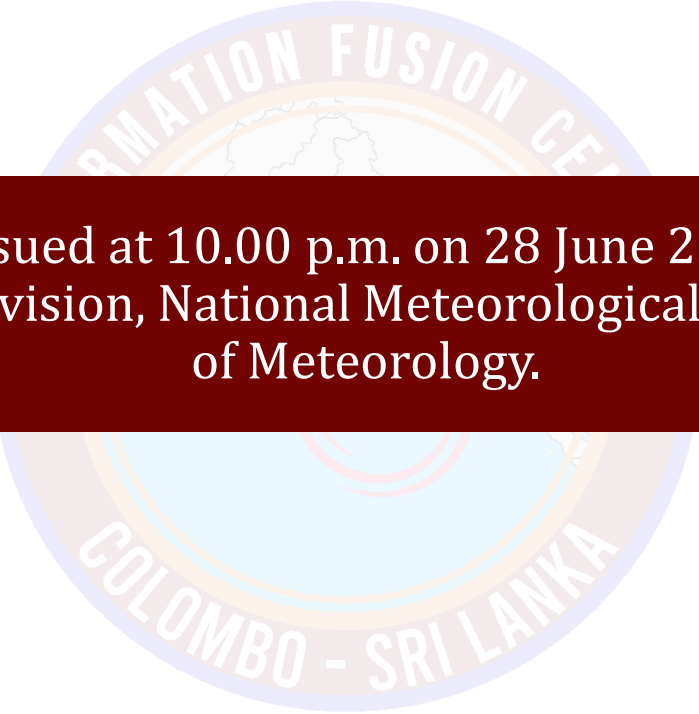


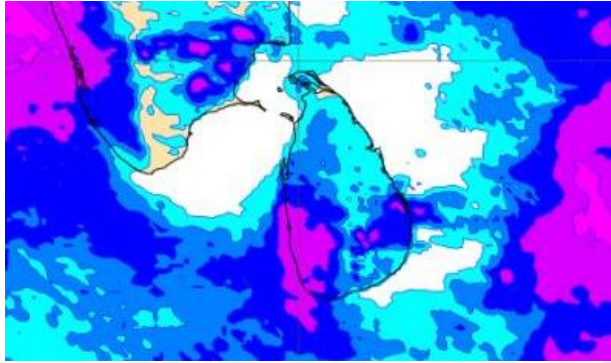
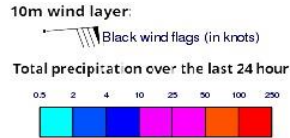
INFORMATION FUSION CENTRE COLOMBO

07 DAY FORECAST FOR COASTAL AREAS AROUND SRI LANKA

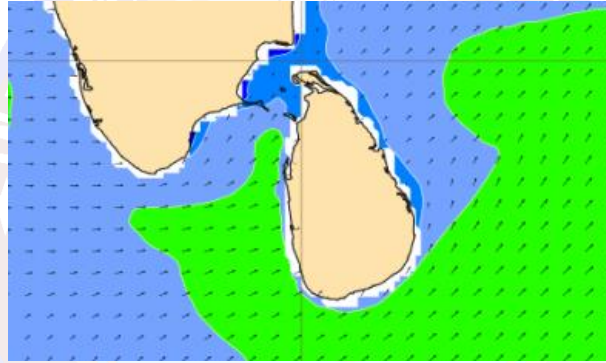
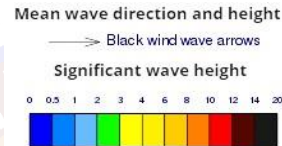


Issued at 10.00 p.m. on 28 June 2023
Marine Weather Division, National Meteorological Centre, Department
of Meteorology.

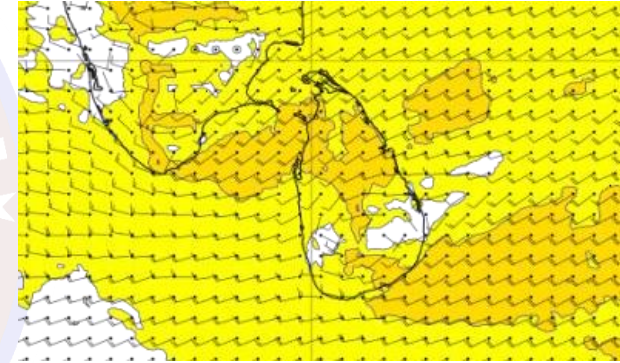
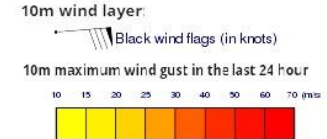
Wind and Rainfall Forecast (Total precipitation for 24 hrs)



Significant wave height (in meters)



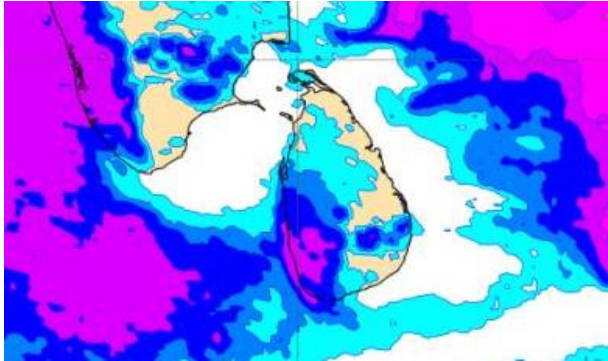
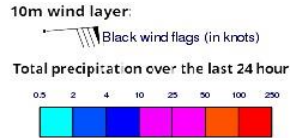
Wind Gust (m/s)



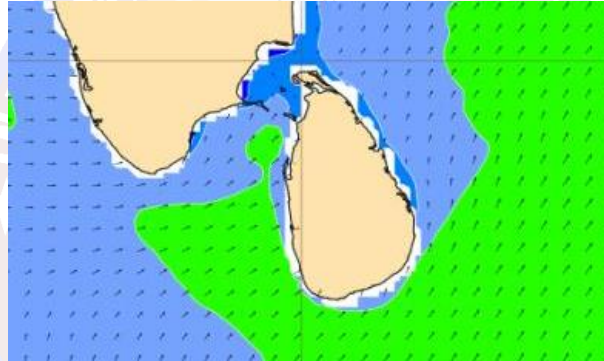
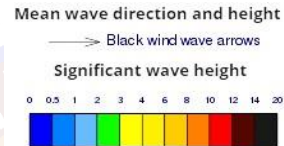
Showers or thundershowers will occur at several places in the sea areas off the coast extending from Puttalam to Matara via Colombo and Galle.

Wind speed will be 25-35 kmph in the sea areas around the island. The sea area extending from Hambantota to Pottuvil and from Kankasanturai to Puttalam via Mannar can be rough at times as the wind speed may increase up to 50-60 kmph at times. The sea areas off the coast extending from Puttalam to Hambantota via Colombo and Galle can be fairly rough at times as the wind speed may increase up to 40-50 kmph at times.

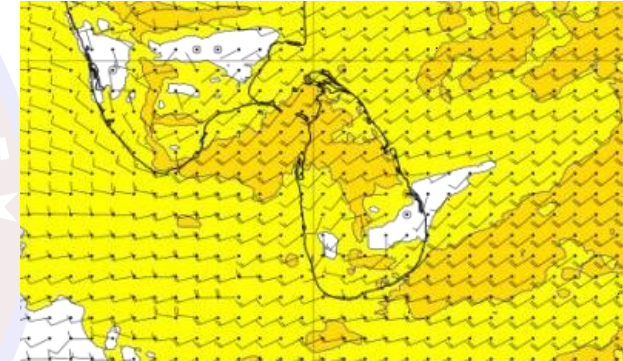
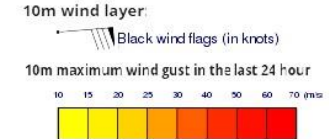
Wind and Rainfall Forecast (Total precipitation for 24 hrs)



Significant wave height (in meters)



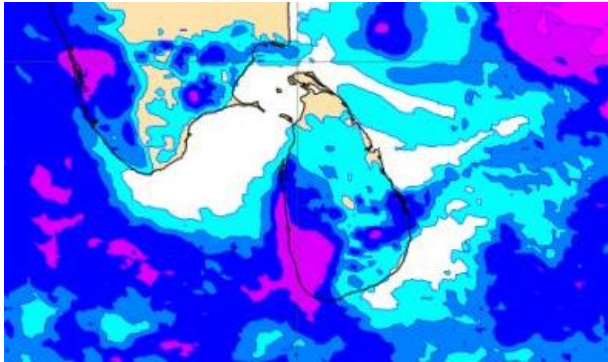
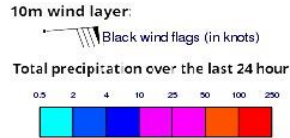
Wind Gust (m/s)



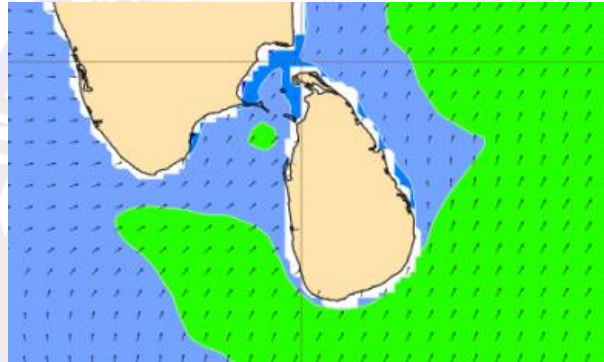
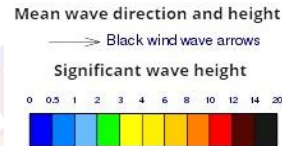
Showers or thundershowers will occur at a few places in the sea areas off the coast extending from Puttalam to Matara via Colombo and Galle.

Wind speed will be 25-35 kmph in the sea areas around the island. The sea area extending from Hambantota to Pottuvil and from Kankasanturai to Puttalam via Mannar can be rough at times as the wind speed may increase up to 50-60 kmph at times. The sea areas off the coast extending from Puttalam to Hambantota via Colombo and Galle can be fairly rough at times as the wind speed may increase up to 40- 50 kmph at times.

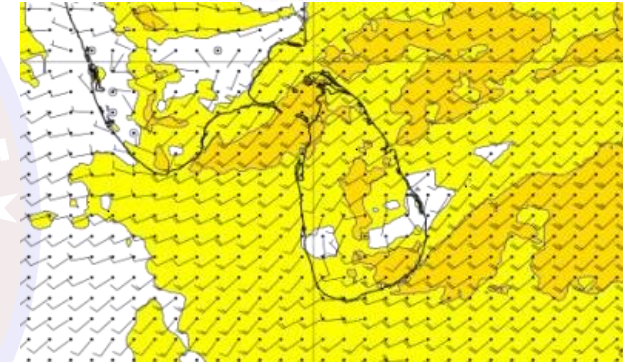
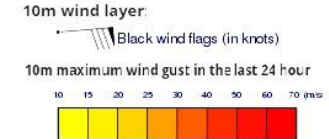
Wind and Rainfall Forecast (Total precipitation for 24 hrs)



Significant wave height (in meters)



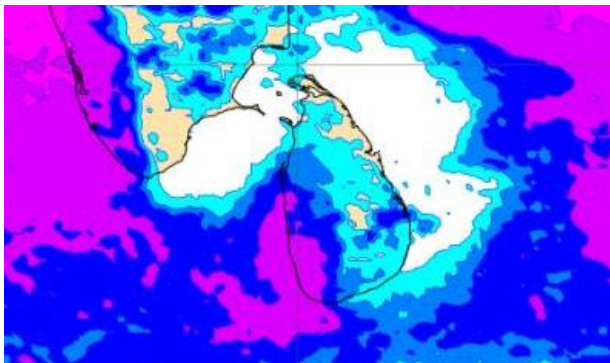
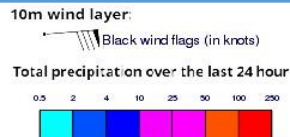
Wind Gust (m/s)



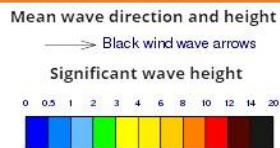
Showers or thundershowers will occur at several places in the sea areas off the coast extending from Puttalam to Matara via Colombo and Galle.

Wind speed will be 25-35 kmph in the sea areas around the island. The sea area extending from Hambantota to Pottuvil and from Kankasanturai to Puttalam via Mannar can be rough at times as the wind speed may increase up to 50-60 kmph at times. The sea areas off the coast extending from Puttalam to Hambantota via Colombo and Galle can be fairly rough at times as the wind speed may increase up to 40- 50 kmph at times.

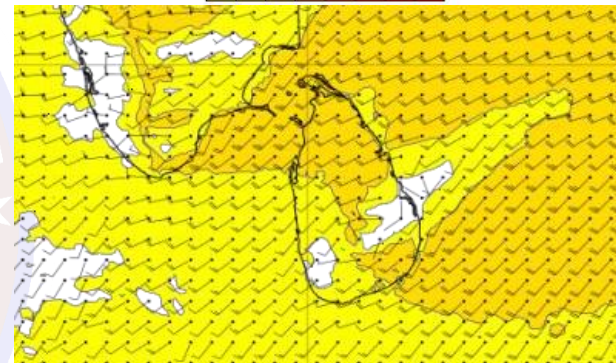
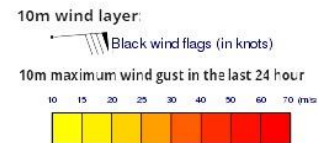
Wind and Rainfall Forecast (Total precipitation for 24 hrs)



Significant wave height (in meters)



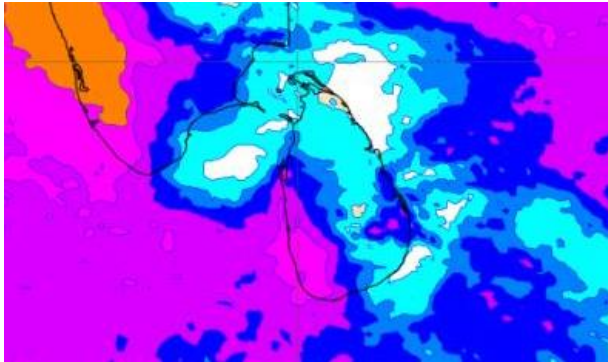
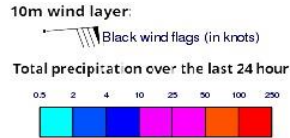
Wind Gust (m/s)



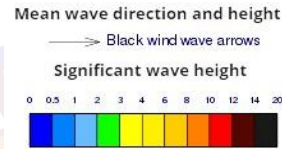
Showers or thundershowers may occur at several places in the sea areas off the coast extending from Puttalam to Galle via Colombo.

Wind speed will be 30-40 kmph in the sea areas around the island. The sea area extending from Hambantota to Pottuvil and from Kankasanturai to Puttalam via Mannar can be rough at times as the wind speed may increase up to 50-60 kmph at times. The sea areas off the coast extending from Puttalam to Hambantota via Colombo and Galle can be fairly rough at times as the wind speed may increase up to 50 kmph at times..

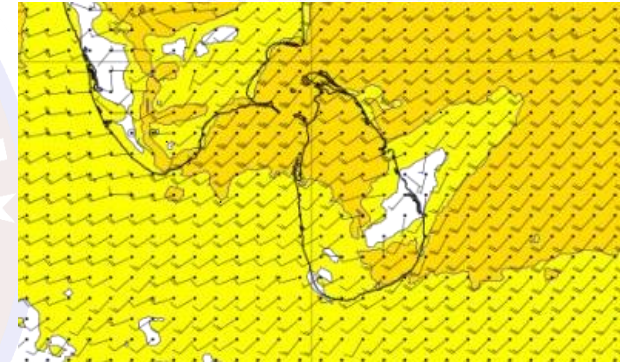
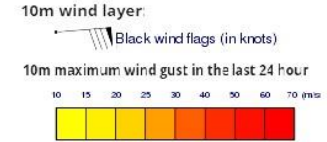
Wind and Rainfall Forecast (Total precipitation for 24 hrs)



Significant wave height (in meters)



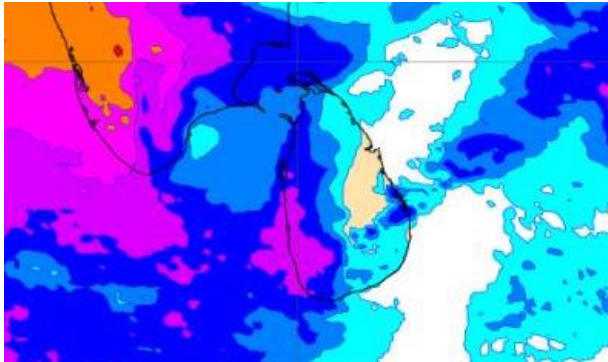
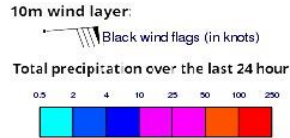
Wind Gust (m/s)



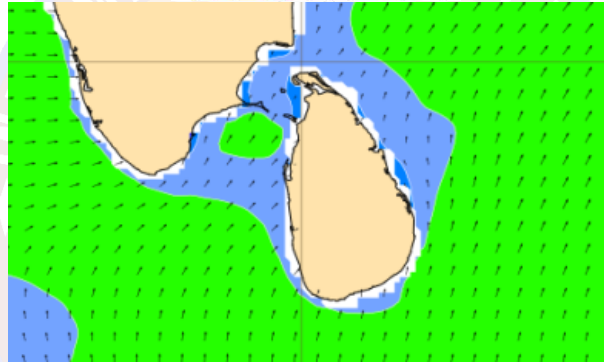
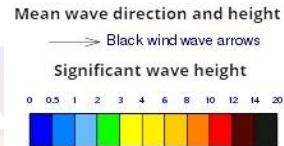
Showers or thundershowers will occur at several places in the sea areas off the coast extending from Puttalam to Matara via Colombo and Galle.

Wind speed will be 30-40 kmph in the sea areas around the island. The sea area extending from Hambantota to Batticaloa via Pottuvil and from Kankasanturai to Puttalam via Mannar can be rough at times as the wind speed may increase up to 50-60 kmph at times. The sea areas off the coast extending from Puttalam to Hambantota via Colombo and Galle can be fairly rough at times as the wind speed may increase up to 50 kmph at times.

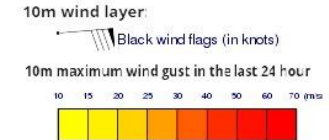
Wind and Rainfall Forecast (Total precipitation for 24 hrs)



Significant wave height (in meters)



Wind Gust (m/s)



Showers or thundershowers will occur at several places in the sea areas off the coast extending from Puttalam to Matara via Colombo and Galle.

Wind speed will be 25-35 kmph in the sea areas around the island. The sea area extending from Pottuvil to Batticaloa and Kankasanturai to Puttalam via Mannar can be fairly rough at times as the wind speed may increase up to 45-55 kmph at times.

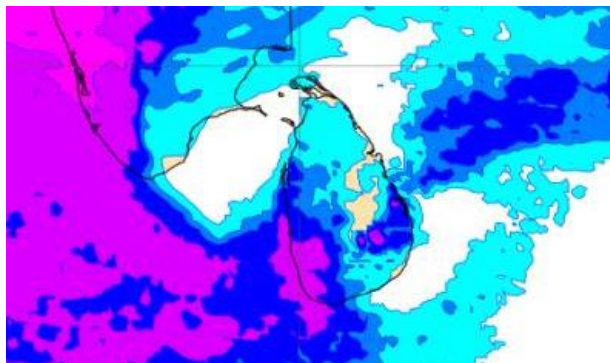
Wind and Rainfall Forecast (Total precipitation for 24 hrs)

10m wind layer:

Black wind flags (in knots)

Total precipitation over the last 24 hour

0.5 2 4 10 25 50 100 200



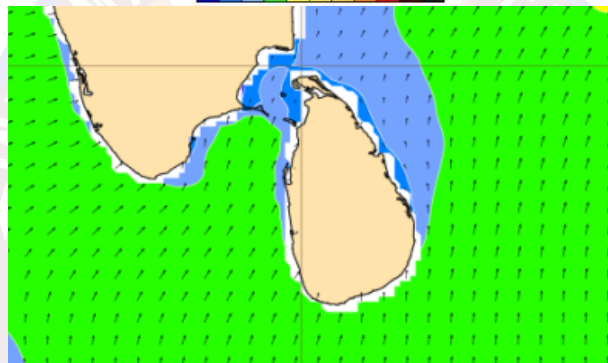
Significant wave height (in meters)

Mean wave direction and height

Black wind wave arrows

Significant wave height

0 0.5 1 2 3 4 6 8 10 12 14 20



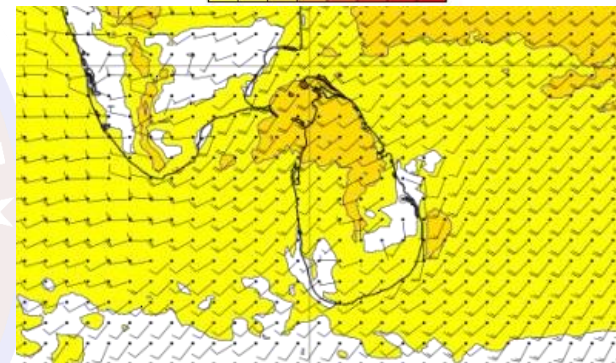
Wind Gust (m/s)

10m wind layer:

Black wind flags (in knots)

10m maximum wind gust in the last 24 hour

10 15 20 25 30 40 50 60 70 (m/s)



Showers or thundershowers will occur at times in the sea areas off the coast extending from Puttalam to Matara via Colombo and Galle.

Wind speed will be 25-35 kmph in the sea areas around the island. The sea area extending from Pottuvil to Batticaloa and Kankasanturai to Puttalam via Mannar can be fairly rough at times as the wind speed may increase up to 45-55 kmph at times.

The logo of the Information Fusion Centre Colombo - Sri Lanka is a circular emblem. It features a map of Sri Lanka in the center, surrounded by concentric circles. The text "INFORMATION FUSION CENTRE" is written in a semi-circle at the top, and "COLOMBO - SRI LANKA" is written in a semi-circle at the bottom. The colors include light blue, yellow, and purple.

Thank you!