



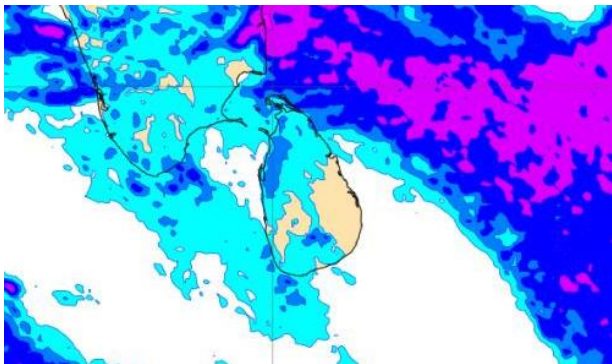
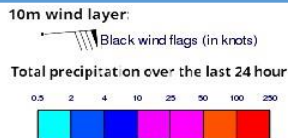
# **INFORMATION FUSION CENTRE COLOMBO**

**8 DAY FORECAST FOR COASTAL AREAS AROUND SRI LANKA**

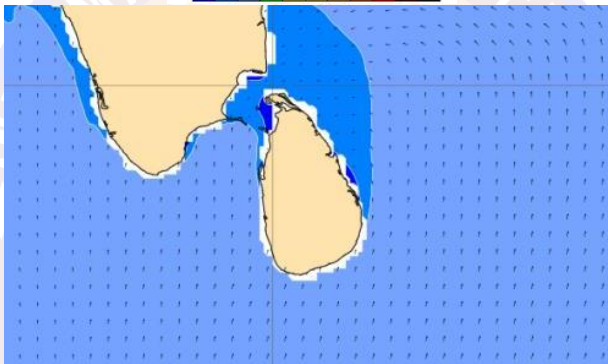
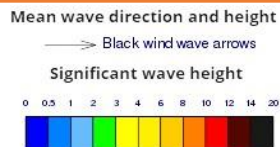
Issued at 10.00 p.m. on 27<sup>th</sup> October 2022  
Marine Weather Division, National Meteorological Centre, Department of  
Meteorology.



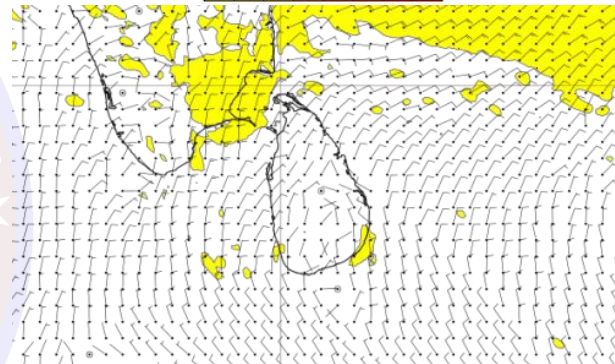
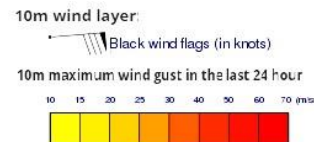
## Wind and Rainfall Forecast (Total precipitation for 24 hrs)



## Significant wave height (in meters)



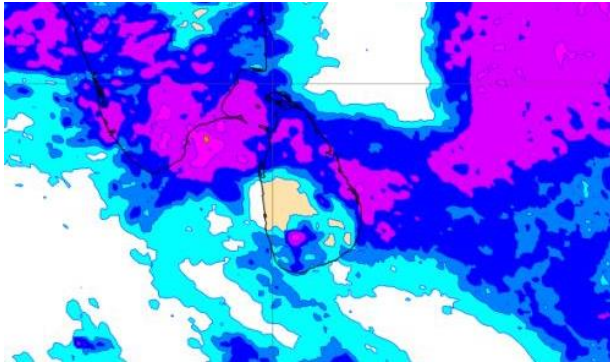
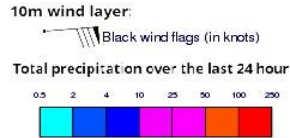
## Wind Gust (m/s)



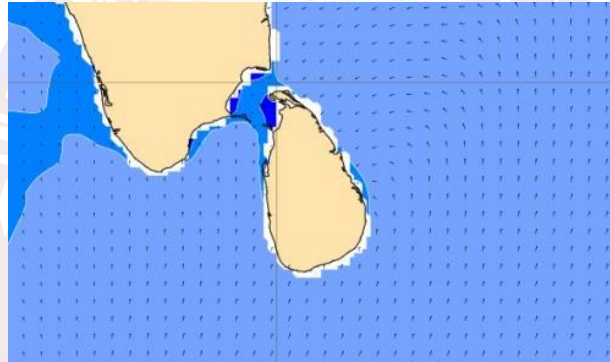
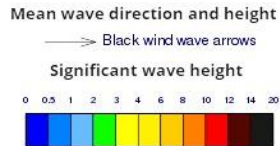
Showers or thundershowers will occur at a few places over the sea areas around the Island.

Wind speed will be 20-30 kmph in the sea areas around the island. The sea areas extending from Galle to Hambantota via Matara can be fairly rough at times as the wind speed can increase up to 45 kmph.

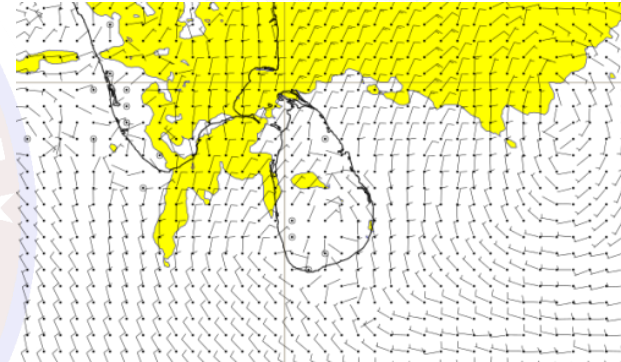
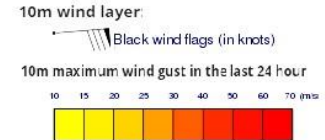
## Wind and Rainfall Forecast (Total precipitation for 24 hrs)



## Significant wave height (in meters)



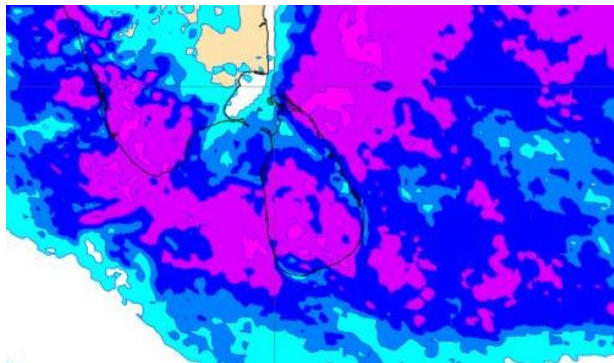
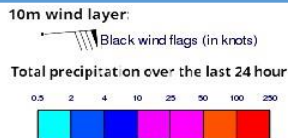
## Wind Gust (m/s)



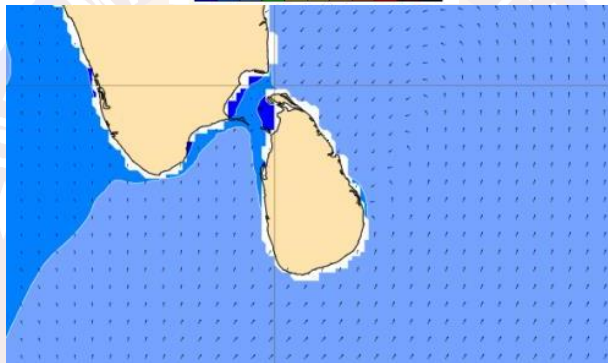
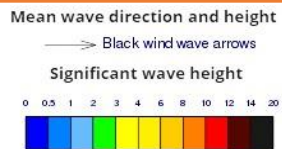
Showers or thundershowers will occur at several places over the sea areas around the Island.

Wind speed will be 25-35 kmph in the sea areas around the island.

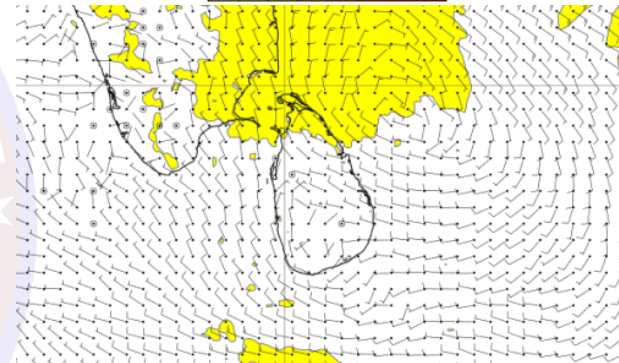
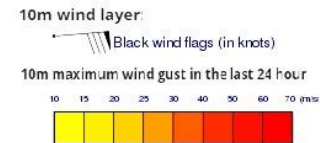
## Wind and Rainfall Forecast (Total precipitation for 24 hrs)



## Significant wave height (in meters)



## Wind Gust (m/s)

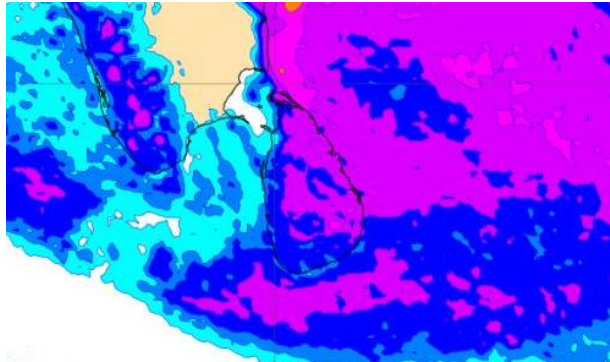
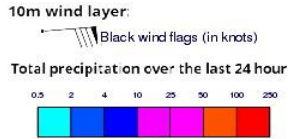


Showers or thundershowers will occur at several places over the sea areas around the Island.

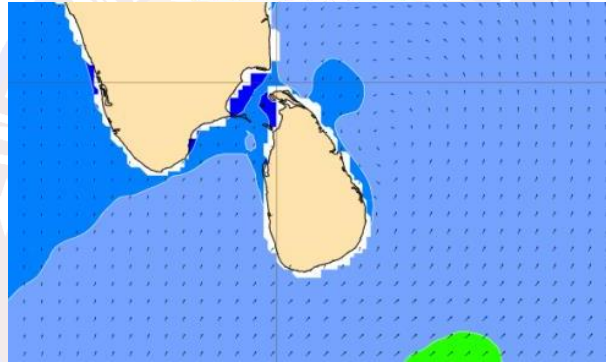
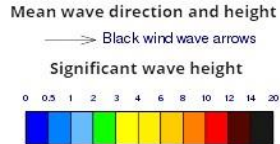
Wind speed will be 25-35 kmph in the sea areas around the island.



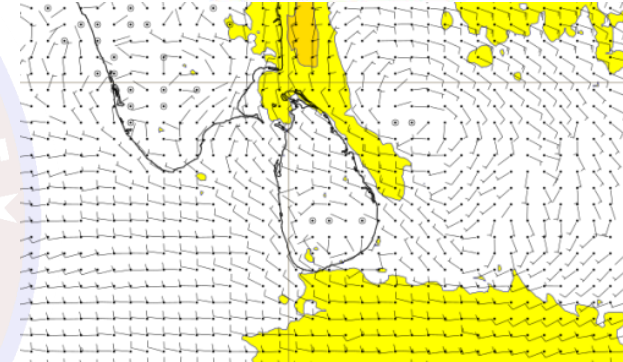
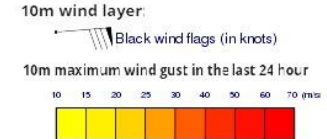
## Wind and Rainfall Forecast (Total precipitation for 24 hrs)



## Significant wave height (in meters)



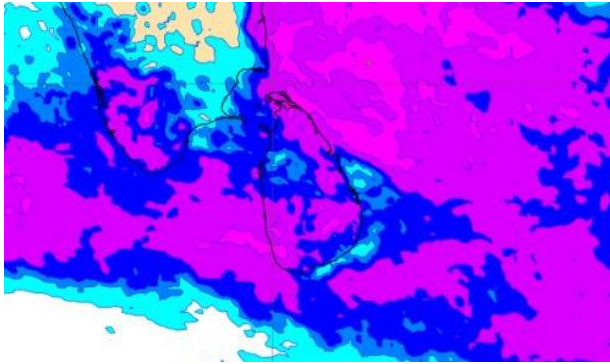
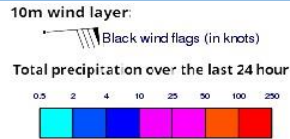
## Wind Gust (m/s)



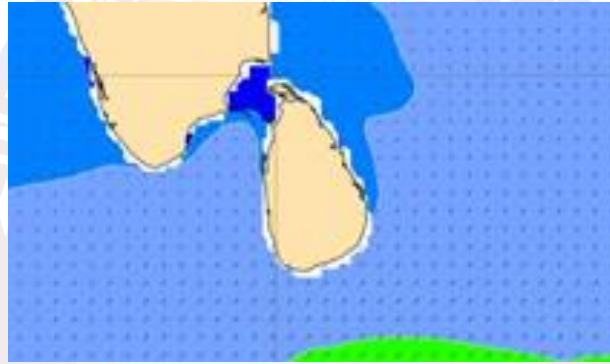
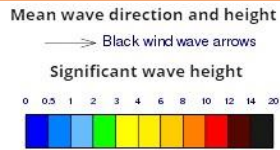
Showers or thundershowers will occur at several places over the sea areas around the Island.

Wind speed will be 20-30 kmph in the sea areas around the island. The sea areas extending from Galle to Hambantota via Matara can be fairly rough at times as the wind speed can increase up to 45 kmph.

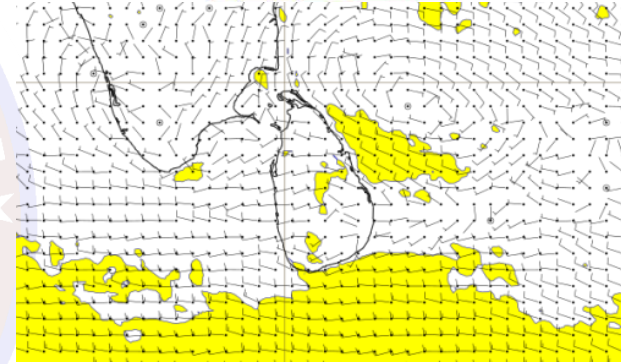
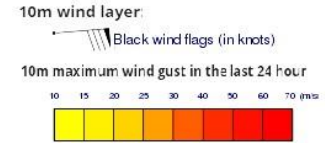
## Wind and Rainfall Forecast (Total precipitation for 24 hrs)



## Significant wave height (in meters)



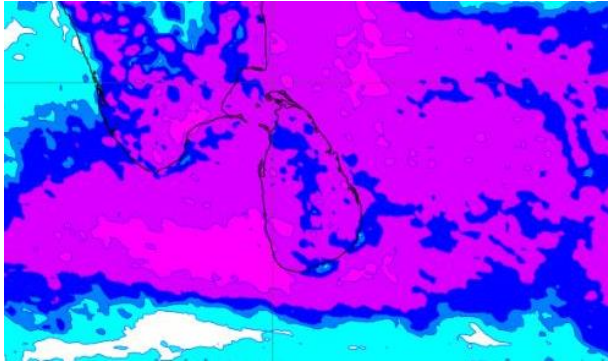
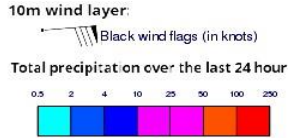
## Wind Gust (m/s)



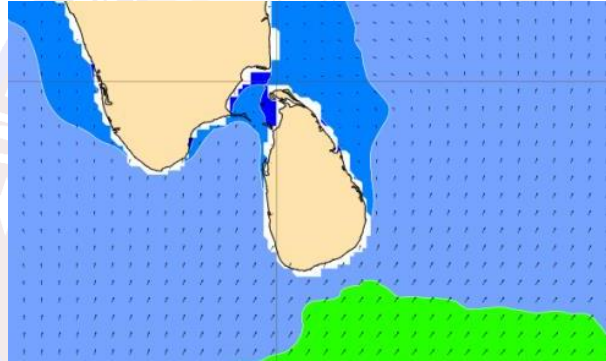
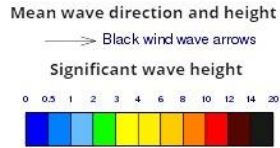
Showers or thundershowers will occur at several places over the sea areas around the Island.

Wind speed will be 25-35 kmph in the sea areas around the island.

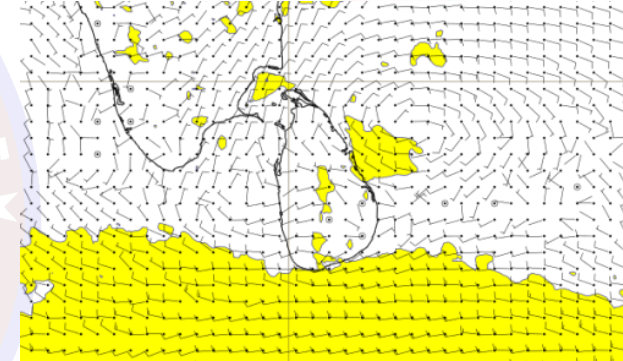
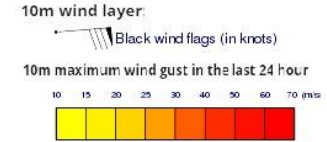
## Wind and Rainfall Forecast (Total precipitation for 24 hrs)



## Significant wave height (in meters)



## Wind Gust (m/s)

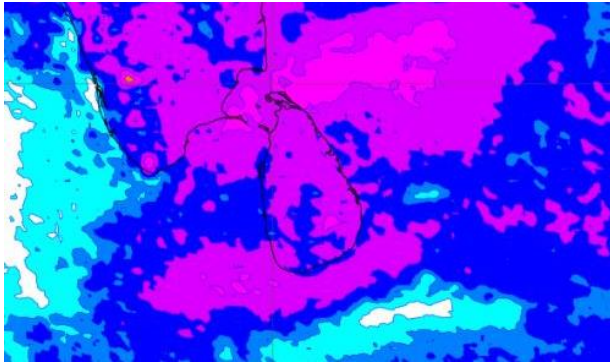
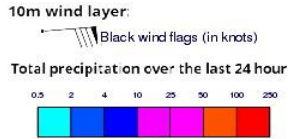


Showers or thundershowers will occur at several places over the sea areas around the Island.

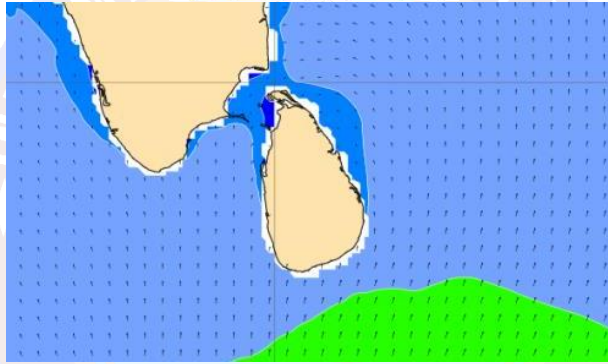
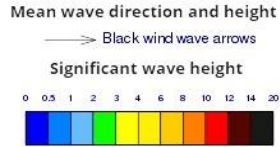
Wind speed will be 20-30 kmph in the sea areas around the island. The sea areas extending from Galle to Hambantota via Matara can be fairly rough at times as the wind speed can increase up to 45 kmph.



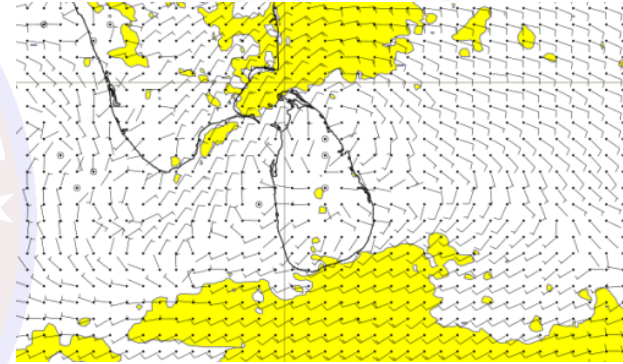
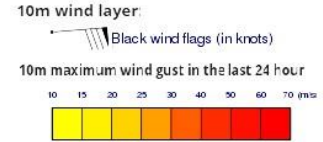
## Wind and Rainfall Forecast (Total precipitation for 24 hrs)



## Significant wave height (in meters)



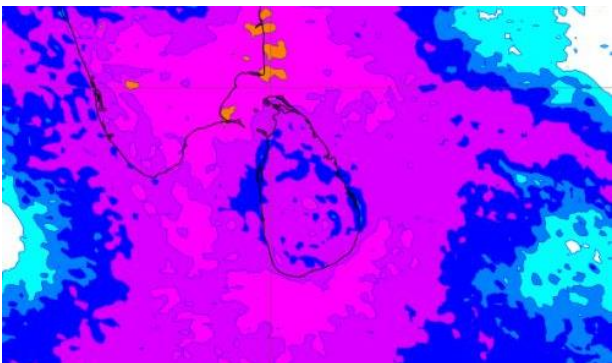
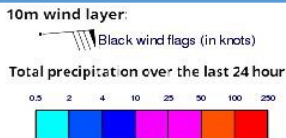
## Wind Gust (m/s)



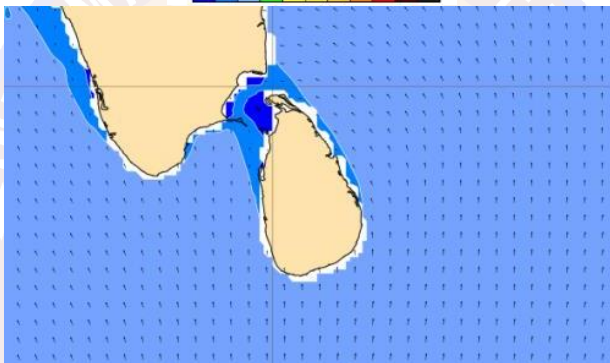
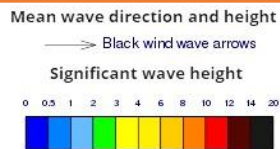
Showers or thundershowers will occur at times over the sea areas around the Island.

Wind speed will be 20-30 kmph in the sea areas around the island. The sea areas extending from Galle to Hambantota via Matara can be fairly rough at times as the wind speed can increase up to 45 kmph.

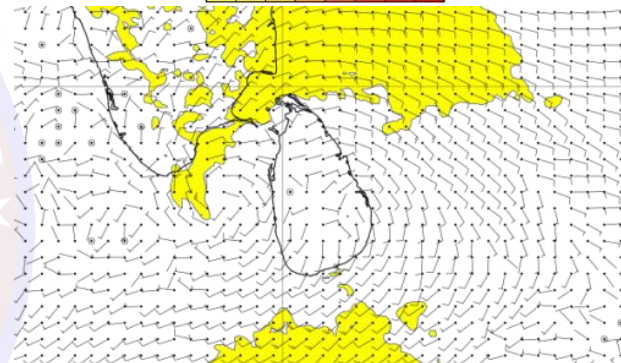
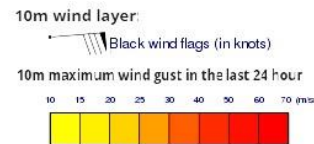
### Wind and Rainfall Forecast (Total precipitation for 24 hrs)



### Significant wave height (in meters)



### Wind Gust (m/s)



Showers or thundershowers will occur at times over the sea areas around the Island.

Wind speed will be 25-35 kmph in the sea areas around the island.