



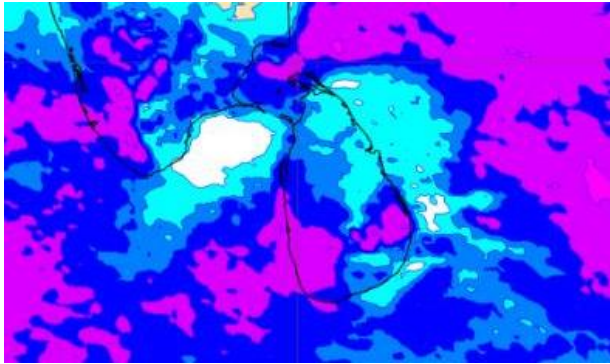
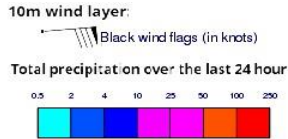
# **INFORMATION FUSION CENTRE COLOMBO**

**8 DAY FORECAST FOR COASTAL AREAS AROUND SRI LANKA**

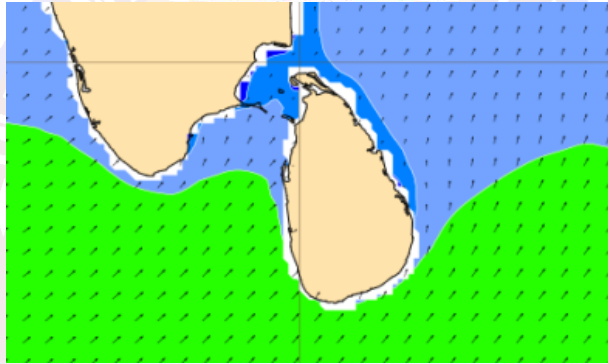
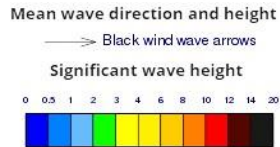
Issued at 10.00 p.m. on 01 September 2022  
Marine Weather Division, National Meteorological Centre, Department of  
Meteorology.



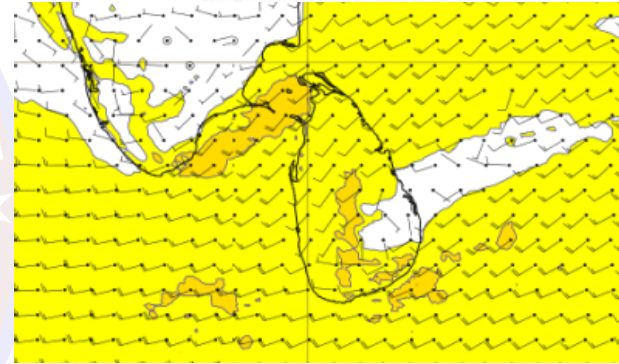
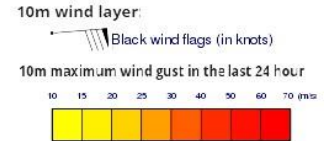
## Wind and Rainfall Forecast (Total precipitation for 24 hrs)



## Significant wave height (in meters)



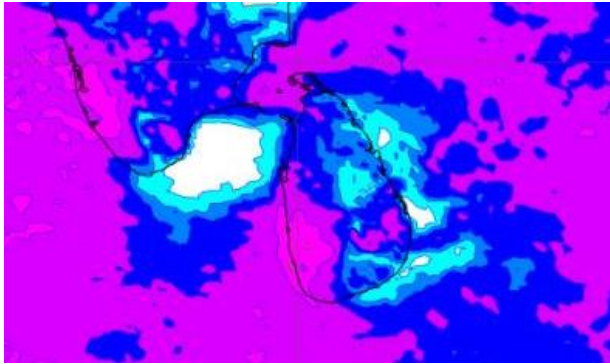
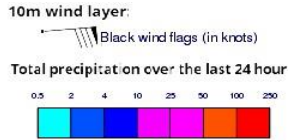
## Wind Gust (m/s)



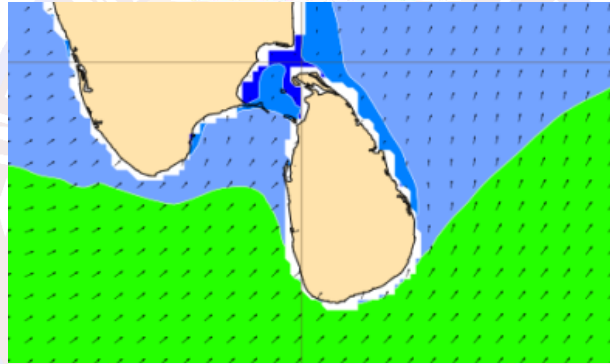
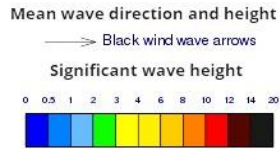
Showers or thundershowers will occur at several places in the sea areas off the coast extending from Kankasanturai to Matara via Mannar, Puttalam, Colombo and Galle.

Wind speed will be 30-40 kmph in the sea areas around the island. The sea areas extending from Kankasanturai to Pottuvil via Puttalam, Colombo, Galle and Hambantota can be rough at times as wind speed can increase up to 50 kmph.

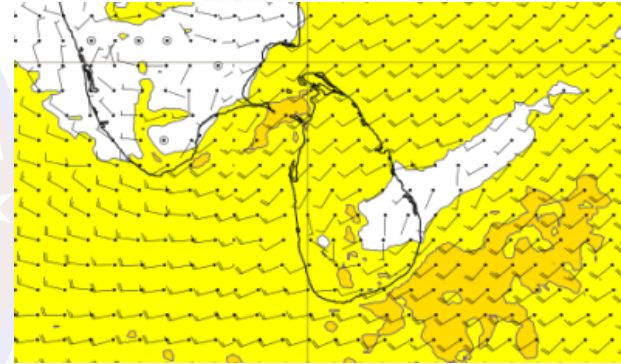
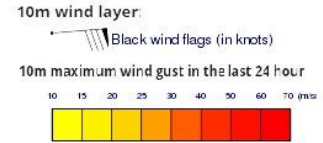
## Wind and Rainfall Forecast (Total precipitation for 24 hrs)



## Significant wave height (in meters)



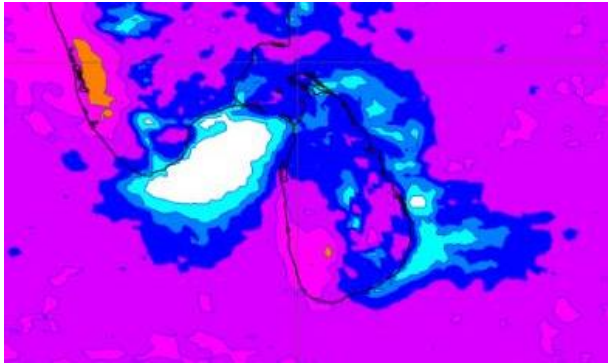
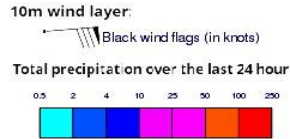
## Wind Gust (m/s)



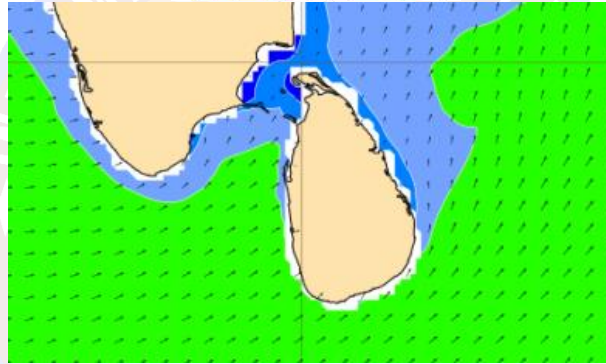
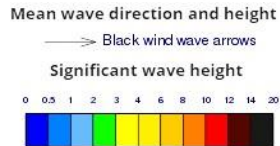
Showers or thundershowers will occur at several places in the sea areas off the coast extending from Kankasanturai to Matara via Mannar, Puttalam, Colombo and Galle.

Wind speed will be 30-40 kmph in the sea areas around the island. The sea area extending from Kankasanturai to Pottuvil via Puttalam, Colombo, Galle and Hambantota can be rough at times as wind

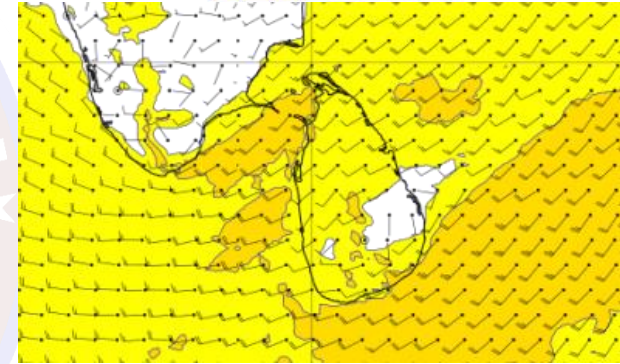
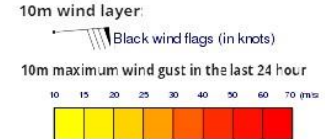
## Wind and Rainfall Forecast (Total precipitation for 24 hrs)



## Significant wave height (in meters)



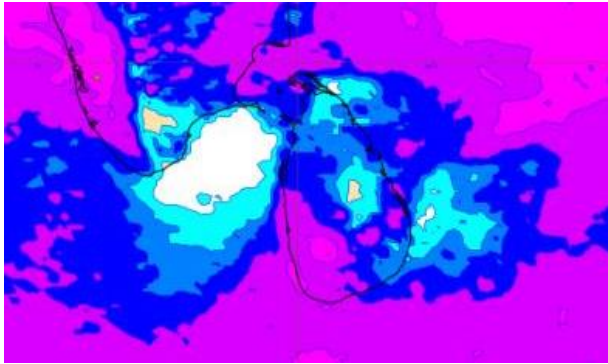
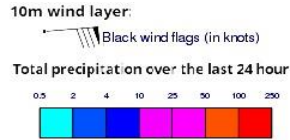
## Wind Gust (m/s)



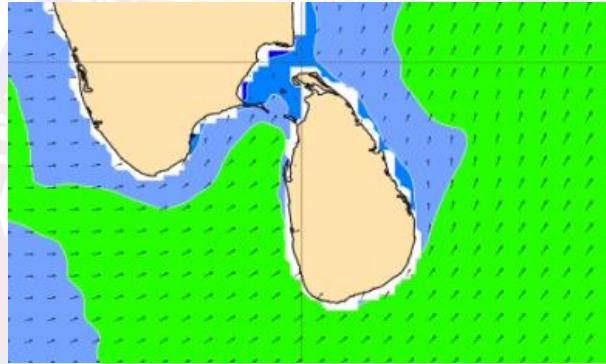
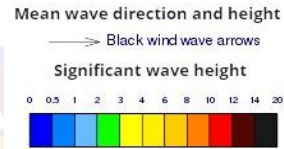
Showers or thundershower will occur at several places in the sea areas off the coast extending from Puttalam to Matara via Colombo and Galle. Thundershowers may occur at several places in the other sea areas particularly in the evening or night.

Wind speed will be 30-40 kmph in the sea areas around the island. The sea areas extending from Kankasanturai to Puttalam via Mannar and the sea area extending from Hambantota to Pottuvil can be rough at times as wind speed can increase up to 50-55 kmph.

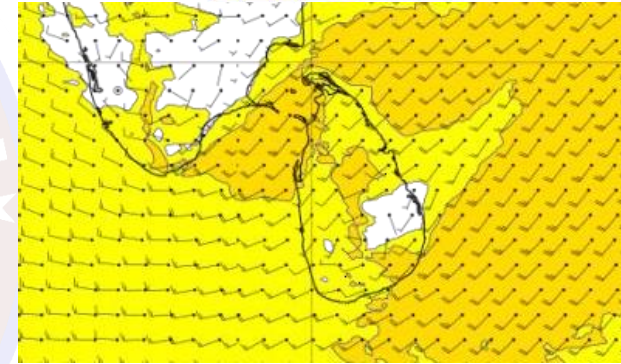
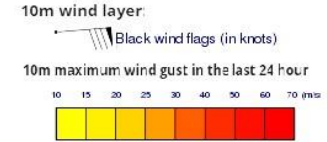
## Wind and Rainfall Forecast (Total precipitation for 24 hrs)



## Significant wave height (in meters)



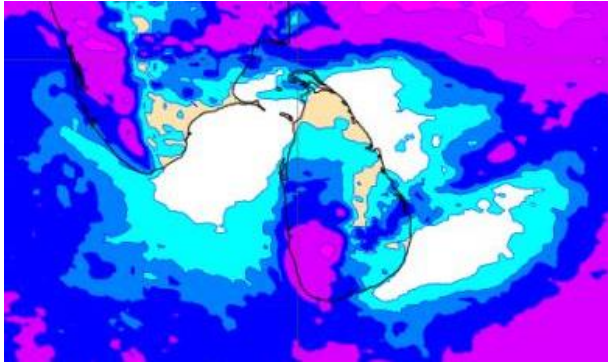
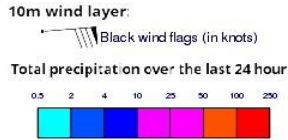
## Wind Gust (m/s)



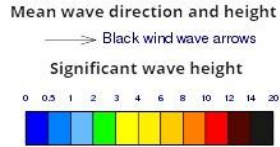
Showers or thundershower will occur at several places in the sea areas off the coast extending from Puttalam to Matara via Colombo and Galle. Thundershowers may occur at several places in the other sea areas particularly in the evening or night.

Wind speed will be 30-40 kmph in the sea areas around the island. The sea areas extending from Kankasanturai to Puttalam via Mannar and the sea area extending from Hambantota to Pottuvil can be rough at times as wind speed can increase up to 50-55 kmph.

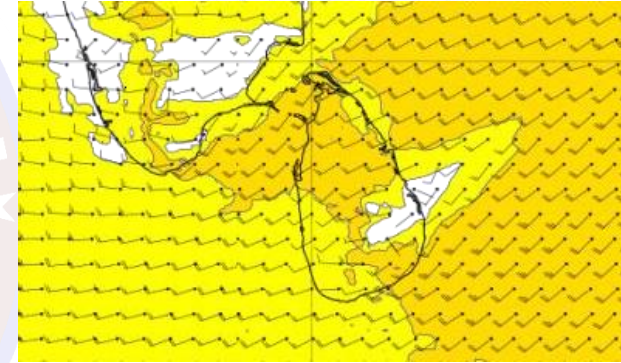
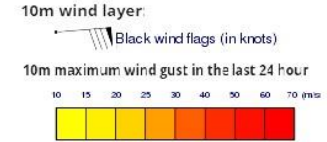
## Wind and Rainfall Forecast (Total precipitation for 24 hrs)



## Significant wave height (in meters)



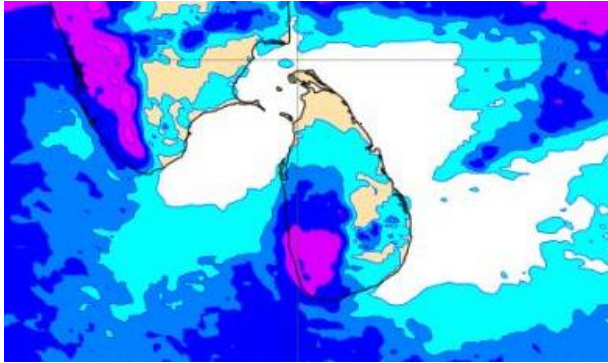
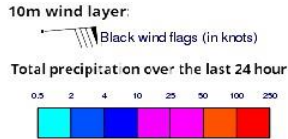
## Wind Gust (m/s)



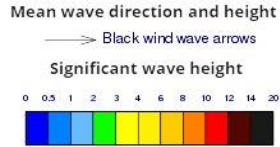
Showers or thundershower will occur at several places in the sea areas off the coast extending from Puttalam to Matara via Colombo and Galle.

Wind speed will be 30-40 kmph in the sea areas around the island. The sea areas extending from Kankasanturai to Puttalam via Mannar and the sea area extending from Hambantota to Pottuvil can be rough at times as wind speed can increase up to 50-55 kmph.

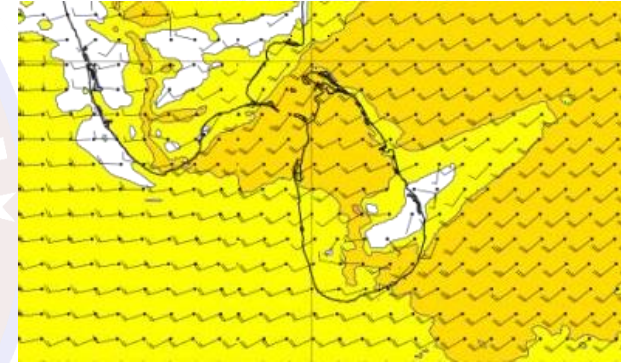
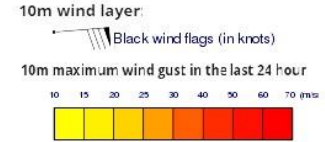
## Wind and Rainfall Forecast (Total precipitation for 24 hrs)



## Significant wave height (in meters)



## Wind Gust (m/s)

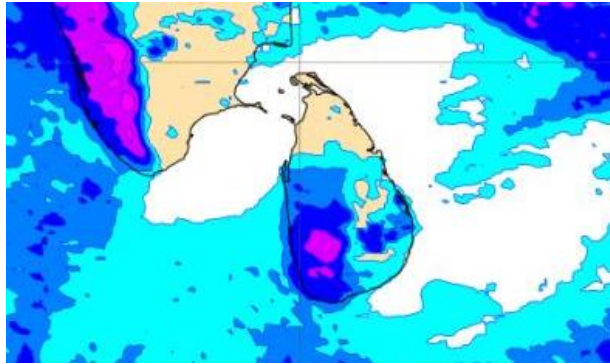
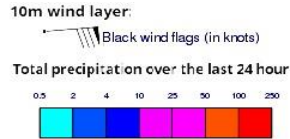


Showers or thundershower will occur at several places in the sea areas off the coast extending from Puttalam to Matara via Colombo and Galle.

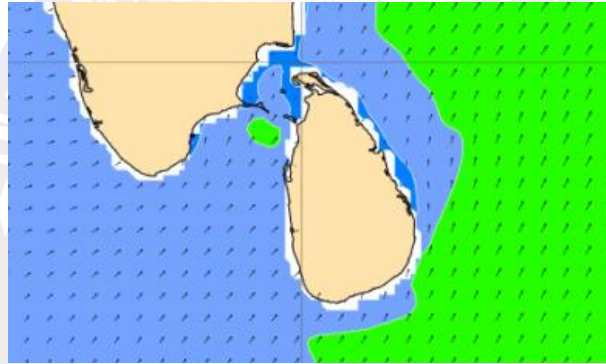
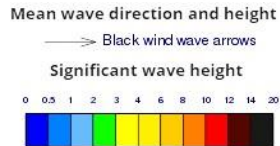
Wind speed will be 30-40 kmph in the sea areas around the island. The sea areas extending from Kankasanturai to Puttalam via Mannar and the sea area extending from Hambantota to Pottuvil can be rough at times as wind speed can increase up to 50-55 kmph.



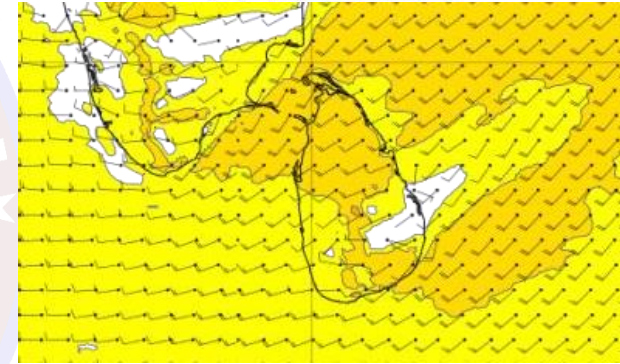
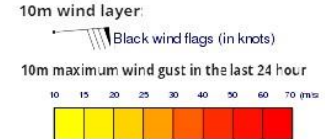
## Wind and Rainfall Forecast (Total precipitation for 24 hrs)



## Significant wave height (in meters)



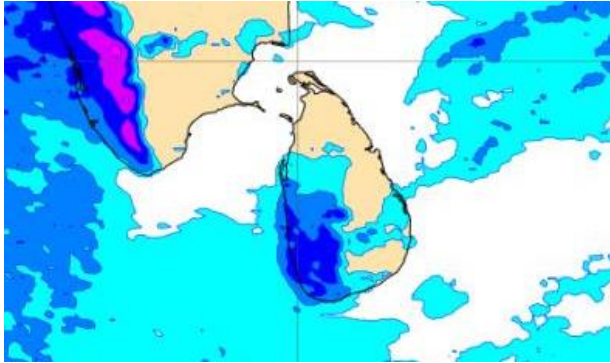
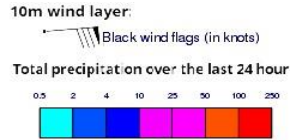
## Wind Gust (m/s)



Showers or thundershower will occur at a few places in the sea areas off the coast extending from Puttalam to Matara via Colombo and Galle.

Wind speed will be 30-40 kmph in the sea areas around the island. The sea areas extending from Kankasanturai to Colombo via Puttalam and the sea area extending from Galle to Pottuvil via Hambantota can be rough at times as wind speed can increase up to 50 kmph.

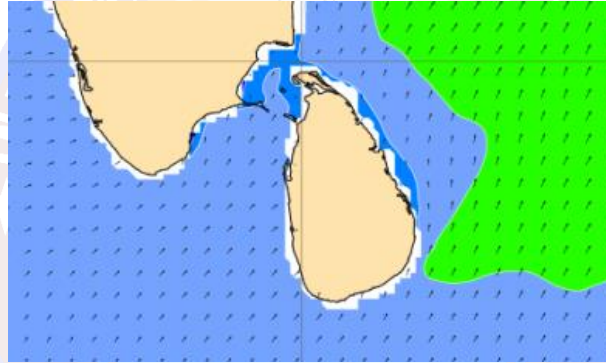
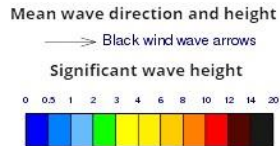
## Wind and Rainfall Forecast (Total precipitation for 24 hrs)



Showers or thundershower will occur at a few places in the sea areas off the coast extending from Puttalam to Matara via Colombo and Galle.

Wind speed will be 30-40 kmph in the sea areas around the island. The sea areas extending from Kankasanturai to Colombo via Puttalam and the sea area extending from Galle to Pottuvil via Hambantota can be rough at times as wind speed can increase up to 50 kmph.

## Significant wave height (in meters)



## Wind Gust (m/s)

